

Facilities

Picnicking: There are picnic areas with tables and park stoves. Parking lots and outhouses are nearby. Water is available at two drinking fountains and playground equipment is provided.

Trails: Horseback riders will find good trails through the park. A nature trail also is available for those who prefer to walk. Snowmobile and cross-country skiing is allowed during winter months -- weather and snowfall permitting.

Fishing: William Creek contains bluegill, bullhead, channel catfish and smallmouth bass for bank fishermen. A 3.8-acre pond is well-stocked. A fishing pier is accessible to disabled anglers.

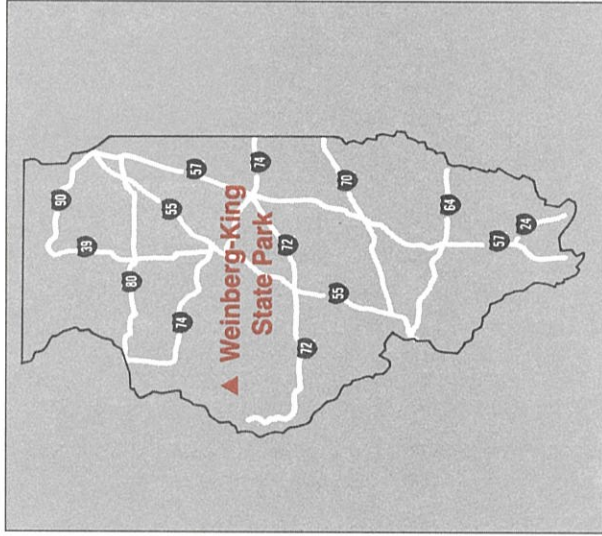
Hunting: Most of the park is available for upland game hunting in season. Consult the park office for information concerning shooting times and opening dates for various game.

Camping: Class B/C (vehicular access), Class D, equestrian and youth group camping areas are available. Please secure a camping permit from park staff.

Please: This area is for all to enjoy, so help keep it clean. Put all litter in trash containers. No plants or parts of any tree may be removed or damaged. If you need help or have a question, contact the park staff.



For more details about this site, contact Site Superintendent, P.O. Box 203, Augusta, IL 62311, or phone (217) 392-2345.



Weinberg-King State Park

P.O. Box 203
Augusta, IL 62311, 217-392-2345

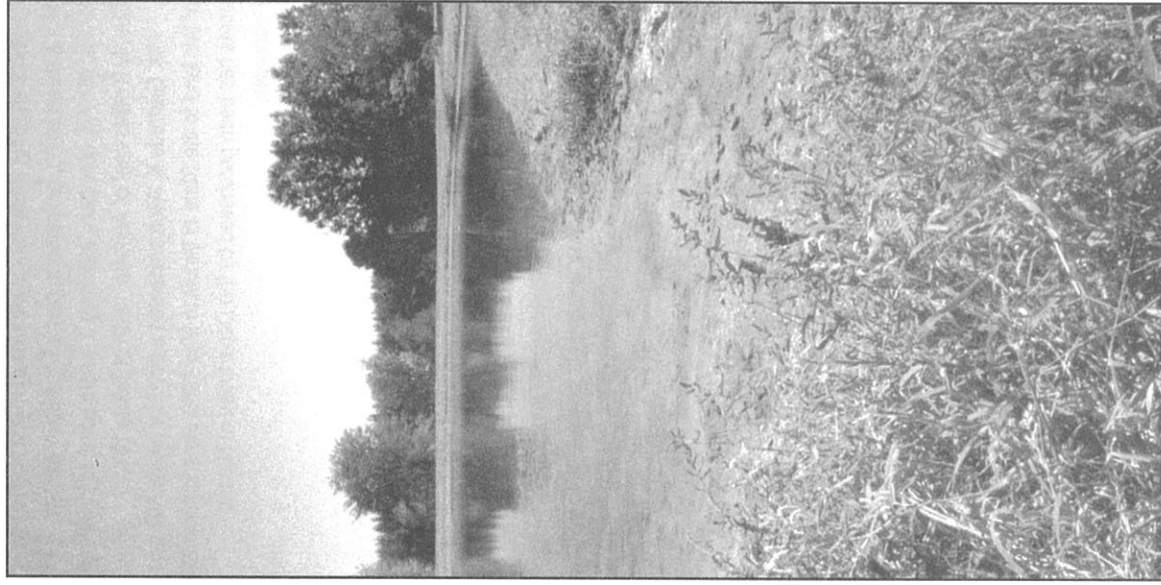
- While groups of 25 or more are welcome and encouraged to use the park's facilities, they are required to register in advance with the site office to avoid crowding or scheduling conflicts.
- At least one responsible adult must accompany each group of 15 minors.
- Pets must be kept on leashes at all times.
- Actions by nature can result in closed roads and other facilities.
- We hope you enjoy your stay. Remember, take only memories, leave only footprints.
- For more information on state parks, write to the Illinois Department of Natural Resources, Office of Public Services, 524 S. Second St., Springfield, IL 62701-1787, call (217) 782-7454 or visit its website at <http://dnr.state.il.us>.
- For more information on tourism in Illinois, call the Illinois Department of Commerce and Community Affairs' Bureau of Tourism at 1-800-2CONNECT.
- Deaf and hearing-impaired individuals may call the Department of Natural Resources' TTY number, (217) 782-9175, or use the Ameritech Relay Number, 1-800-526-0844.

George H. Ryan
Governor

Brent Manning
Director, Dept. of Natural Resources

Equal opportunity to participate in programs of the Illinois Department of Natural Resources (IDNR) and those funded by the U.S. Fish and Wildlife Service and other agencies is available to all individuals regardless of race, sex, national origin, disability, age, religion or other non-merit factors. If you believe you have been discriminated against, contact the funding source's civil rights office and/or the Equal Employment Opportunity Officer, IDNR, 524 S. 2nd, Springfield, IL 62701-1787; (217) 785-0067; TTY (217) 782-9175.

Printed by authority of the State of Illinois
(3135544--25M--4-2000)



Weinberg-King State Park

The Park

Weinberg-King State Park is an area of rolling scenic hills with a meandering, picturesque creek. Located in western Illinois, the 772-acre park, including a 4-acre pond, is in Schuyler County 3 miles east of Augusta, north of Route 101.

Mrs. Gertrude K. Allen presented a deed for nearly 500 acres of this land to the State of Illinois in May 1968. An additional 295 acres has been purchased by the Department of Natural Resources.

History

The deed to the property was presented to state officials in an informal ceremony held at the Allen home in Augusta. Mrs. Allen had indicated a desire for some time to do something in memory of her parents, the late Frederick M. and Fredericka Weinberg-King and her three brothers, Jacob King, Harry M. King and L. Edson King. Max Weinberg, a Quincy attorney and a cousin of Mrs. Allen, made arrangements for the land to be given to the state in accordance with the wish of the 85-year-old benefactor. The legislature honored this wish for a family memorial by officially naming the area Weinberg-King State Park.

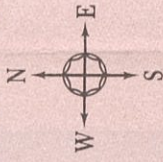
The land, then estimated to be worth more than \$250,000, had been owned by the Allen family since 1905. Most of the land was not cultivated, but instead maintained as a permanent pasture. The 295-acre farm purchased from Paul Dennis was partly in cultivation and contained the 3.8-acre farm pond. Dennis previously operated a commercial poultry products cannery. The operation's "turkey houses" fronting the highway were landmarks in the area until they were removed to make way for the new road into the park.

Natural Features

The terrain is rolling, with steep hillsides. William Creek is picturesque and meanders through the park for about 2 miles. The average depth of the creek is about 3 feet. The majority of mature trees are locust and osage orange, although pine, honey-suckle, oak and walnut trees have been planted. Many wildflowers are found on the hillsides and along the creek.

Doves, quail and songbirds familiar to the area may be observed. Red squirrels and rabbits are plentiful and deer are seen frequently.

Weinberg-King State Park



Legend	
	Headquarters
	Park Boundary
	Horse Trail
	Hiking Trail
	Picnic Shelter
	Camping Area
	Horse Camping

