



**DEPARTMENT OF THE ARMY**  
U.S. ARMY CORPS OF ENGINEERS, CHICAGO DISTRICT  
231 SOUTH LASALLE STREET, SUITE 1500  
CHICAGO IL 60604

April 02, 2024

Environmental & Cultural Resources Section  
Planning Branch

SUBJECT: Coastal Zone Management Act Federal Consistency Determination for  
FY24 Chicago Harbor Control House Rehabilitation Project, Cook County, Illinois

Cody Eskew  
IDNR Coastal Management Program  
Michael A. Bilandic Building  
160 N. LaSalle Street, Suite 703  
Chicago, Illinois 60601  
[Cody.eskew@Illinois.gov](mailto:Cody.eskew@Illinois.gov)

Dear Mr. Eskew:

The Chicago District of the U.S. Army Corps of Engineers (USACE) proposes to rehabilitate the exteriors and interiors of four control houses and one maintenance shop/tool room at the Chicago Harbor Lock in Chicago, Cook County, Illinois (Enclosure 1). The proposed updates to the facility include the following:

- Replace windows, doors, door frames, and transom windows for the four control houses listed A-House, B-House, C-House, and D-House (Enclosure 2). Doors and framing will be replaced in-kind. No windows will need to be replaced in A-House. B-House will require replacing the two glass block windows, C- and D-House require six new windows each, all windows will be replaced with double-paned tinted picture windows of matching dimensions. Exterior window frames will be removed and not replaced.
- Remove existing paint from the four control houses and maintenance shop/tool room using low pressure abrasive blasting to avoid damaging the concrete.
- Paint the exterior of the four control houses and maintenance shop/tool room using an epoxy marine paint or waterproof masonry coating on the concrete of the buildings, conduits, handrails, and ladders. All paint will be color matched to the existing condition.
- Rehabilitate the interior of the four control houses, including replacement of rotten wood and missing molding, and paint.

The proposed activities will not negatively impact coastal use or resources. The proposed activity complies with Illinois' approved coastal management program and will be conducted in a manner consistent with such policies.

We request your concurrence with this determination within 60 days in accordance with the CZMA. Illinois's concurrence will be presumed if its response is not received within this timeframe plus any extension, as applicable, pursuant to 15 CFR 930.41(b). Please contact Mr. Andrew J. Miller at [REDACTED] or [REDACTED] if you have any questions or need any additional information.

Sincerely,

A handwritten signature in black ink that reads "Alex Hoxsie". The signature is written in a cursive, flowing style.

Alex Hoxsie  
Chief, Environmental & Cultural Resources  
Planning Branch

Enclosures:

1. Project Map
2. Site Photographs



## **US Army Corps of Engineers®**

Chicago District  
Planning Branch  
231 South LaSalle Street  
Suite 1500  
Chicago, Illinois 60604  
312-353-6400

### **Enclosure 1 – Project Map**

Coastal Zone Management Act Federal Consistency Determination for FY24  
Chicago Harbor Control House Rehabilitation Project, Cook County, Illinois



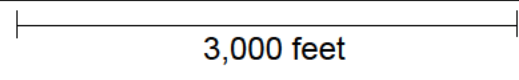
**US Army Corps  
of Engineers®**  
Chicago District



### Project Location Map



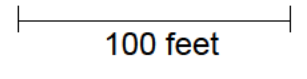
Aerial photograph from June 2023  
★ 44.888471°, -87.606383°



### Control House Layout Map



Aerial photograph from July 2022  
Facing north





## **US Army Corps of Engineers®**

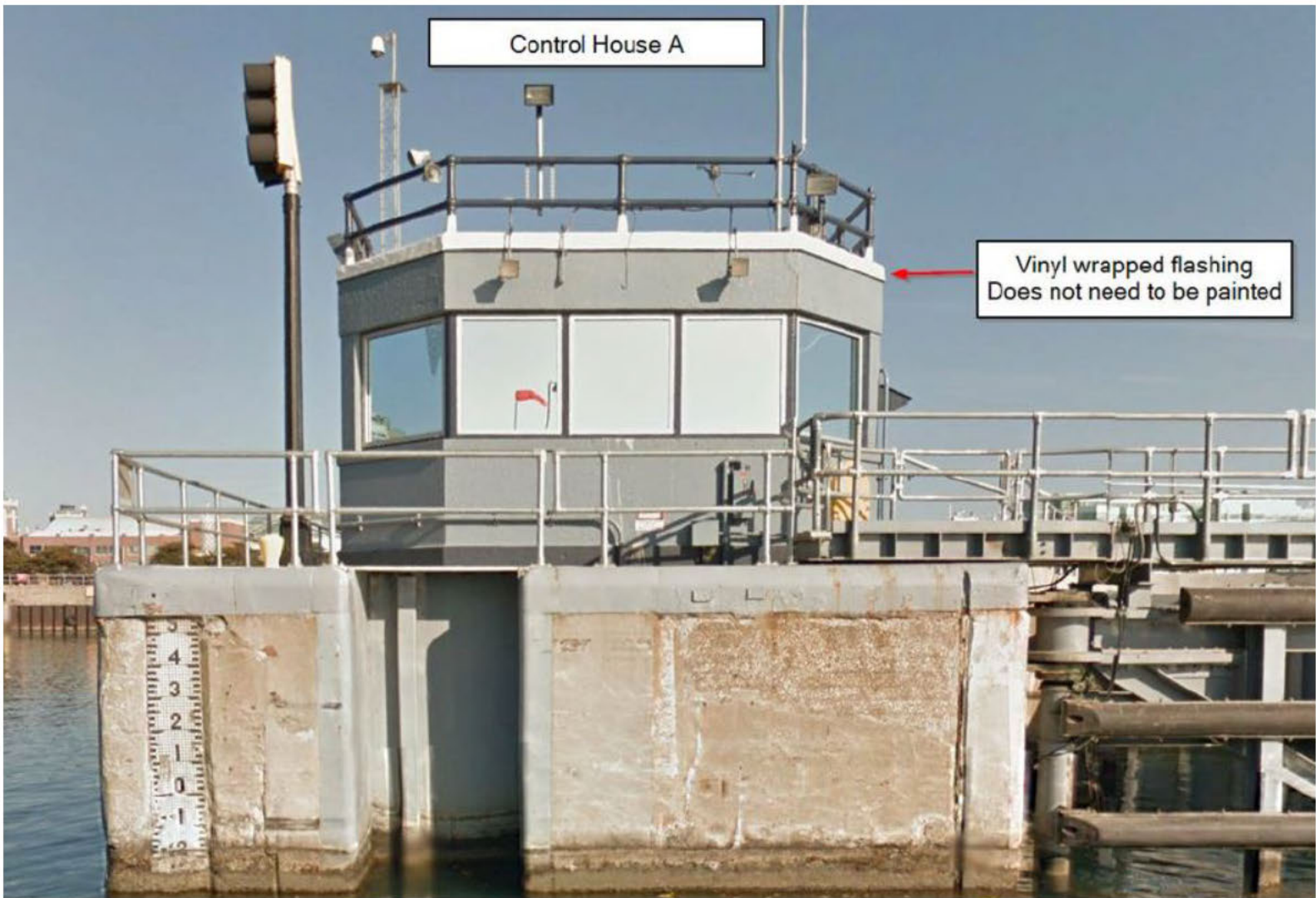
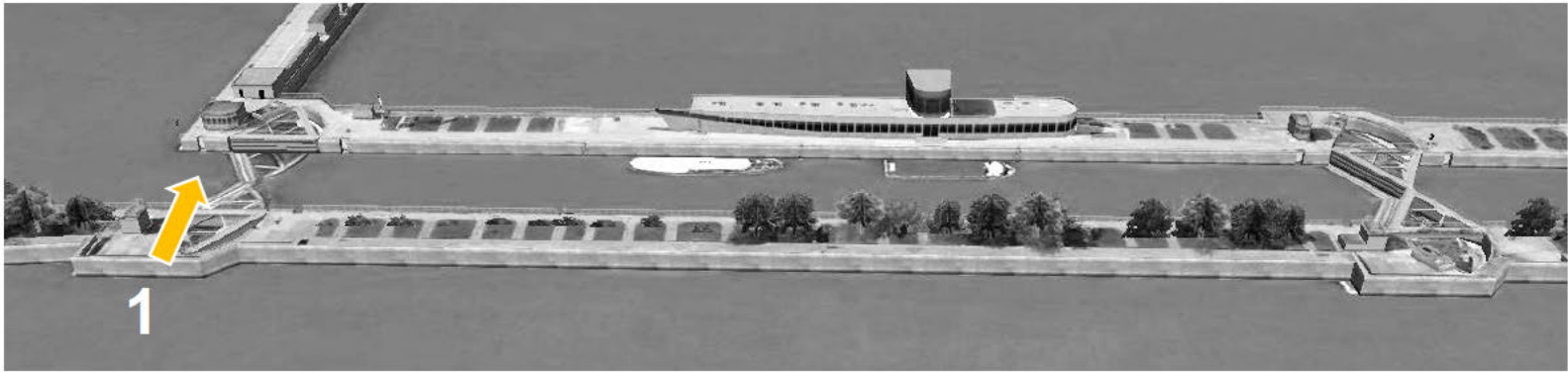
Chicago District  
Planning Branch  
231 South LaSalle Street  
Suite 1500  
Chicago, Illinois 60604  
312-353-6400

### **Enclosure 2 – Site Photographs**

Coastal Zone Management Act Federal Consistency Determination for FY24  
Chicago Harbor Control House Rehabilitation Project, Cook County, Illinois



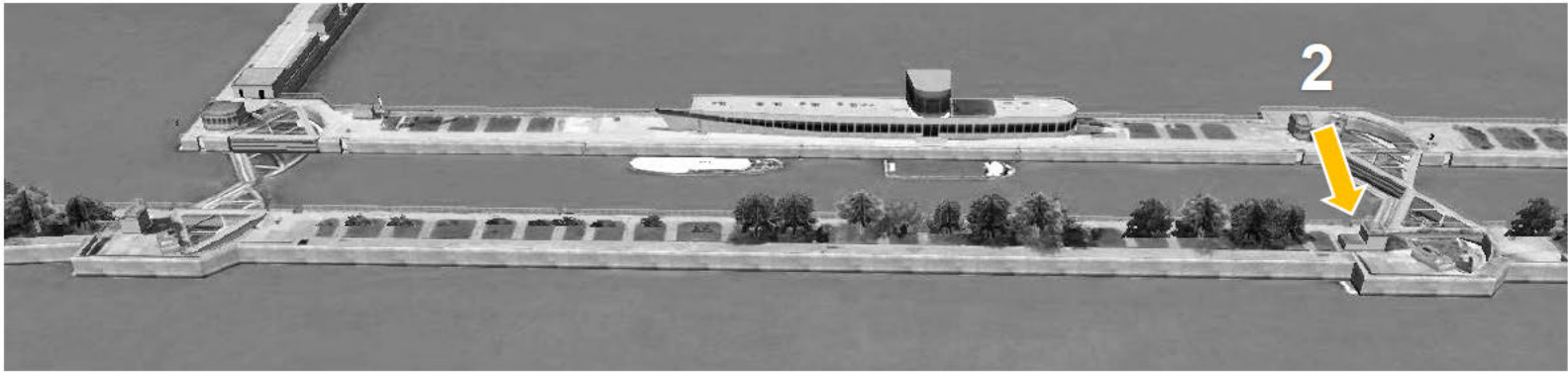
**US Army Corps  
of Engineers**®  
Chicago District



**Photo 1.** View of Control House A (“A-House”) at the western end of the lock chamber at Chicago Harbor, facing north.



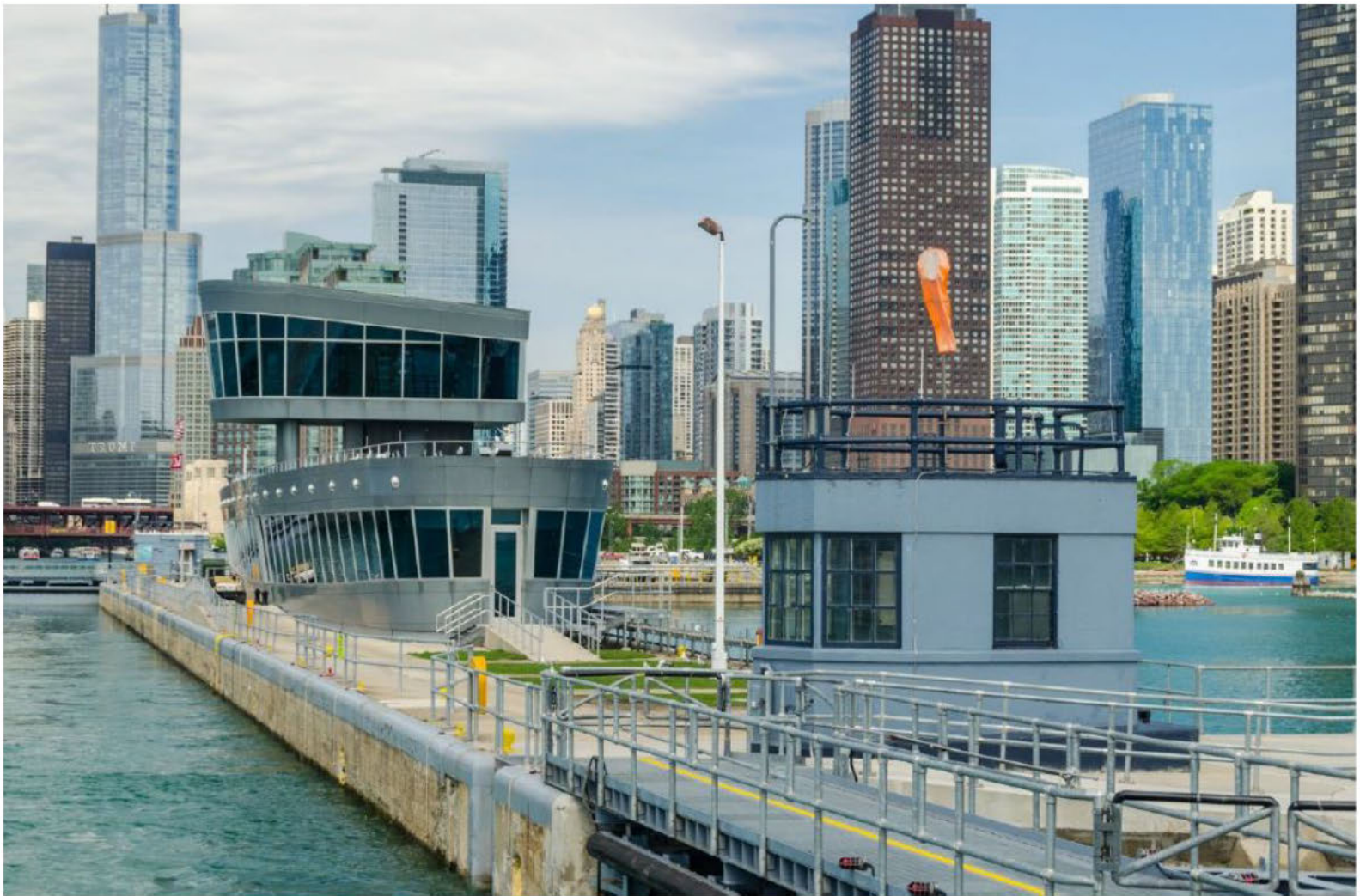
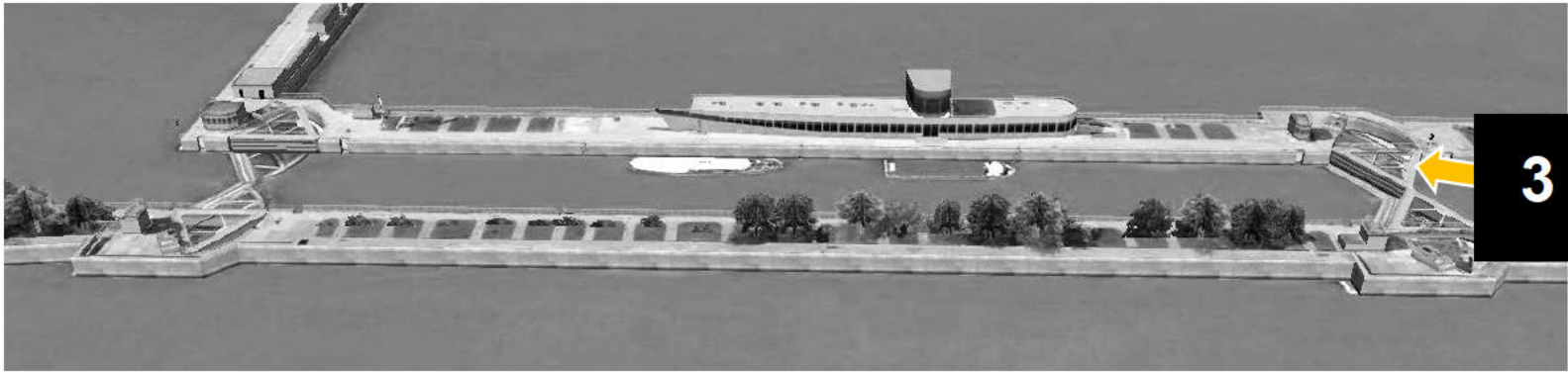
**US Army Corps  
of Engineers**®  
Chicago District



**Photo 2.** View of Control House B (“B-House”) at the eastern end of the lock chamber at Chicago Harbor, facing south.



**US Army Corps  
of Engineers**®  
Chicago District

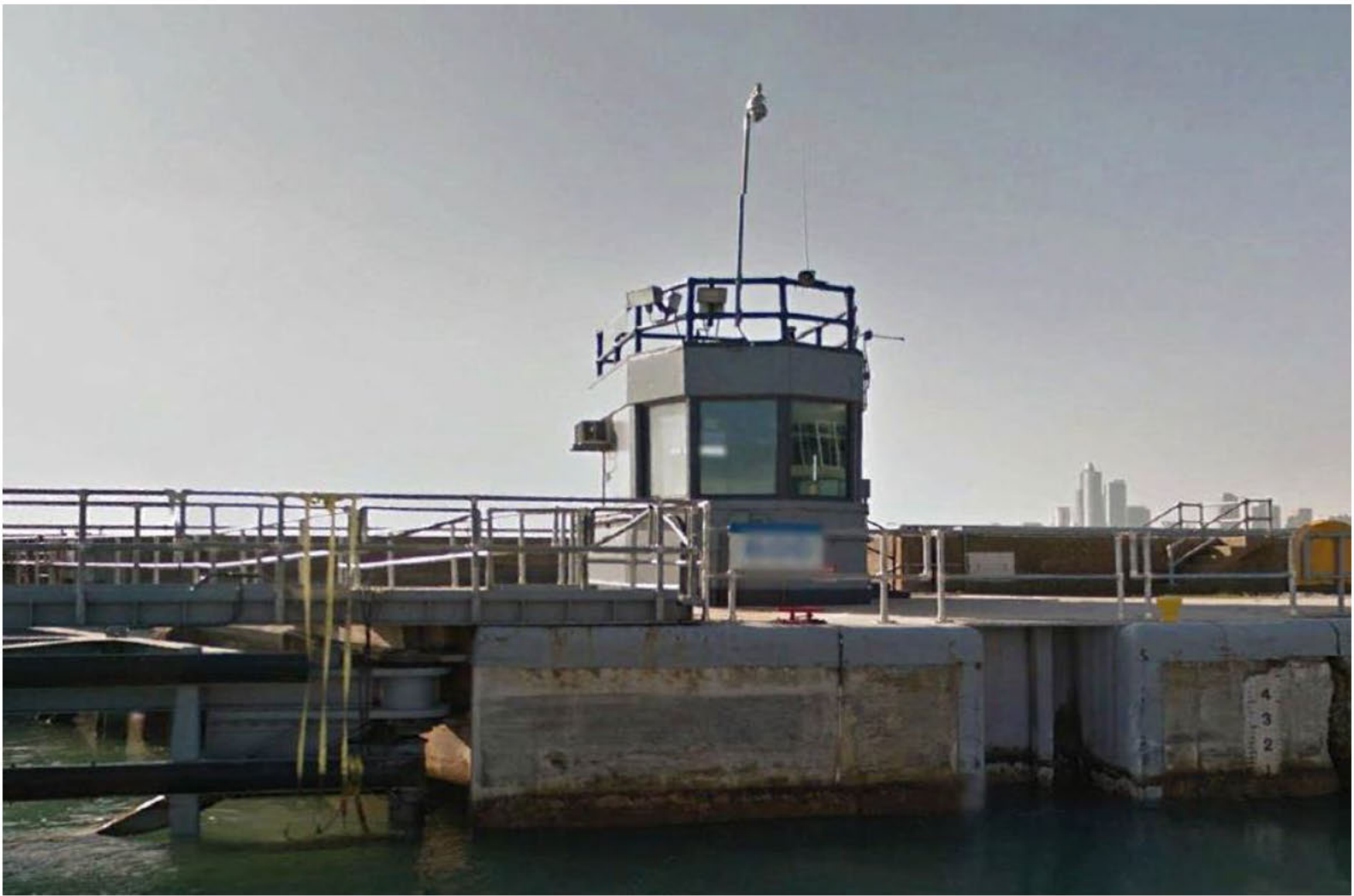
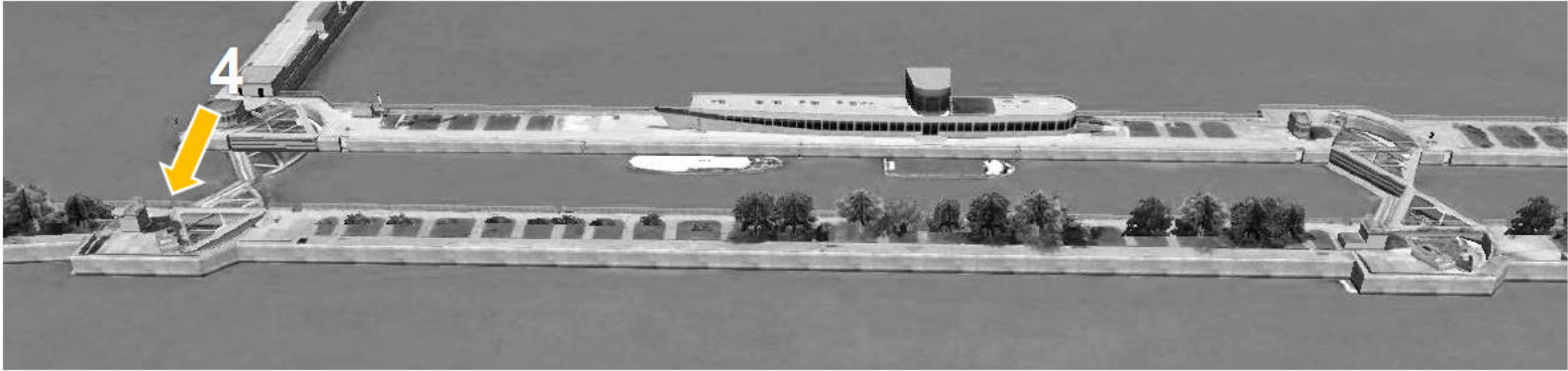


**Photo 3.** View of Control House C (“C-House”) at the eastern end of the lock chamber at Chicago Harbor, facing west. Lock control tower is in the background.





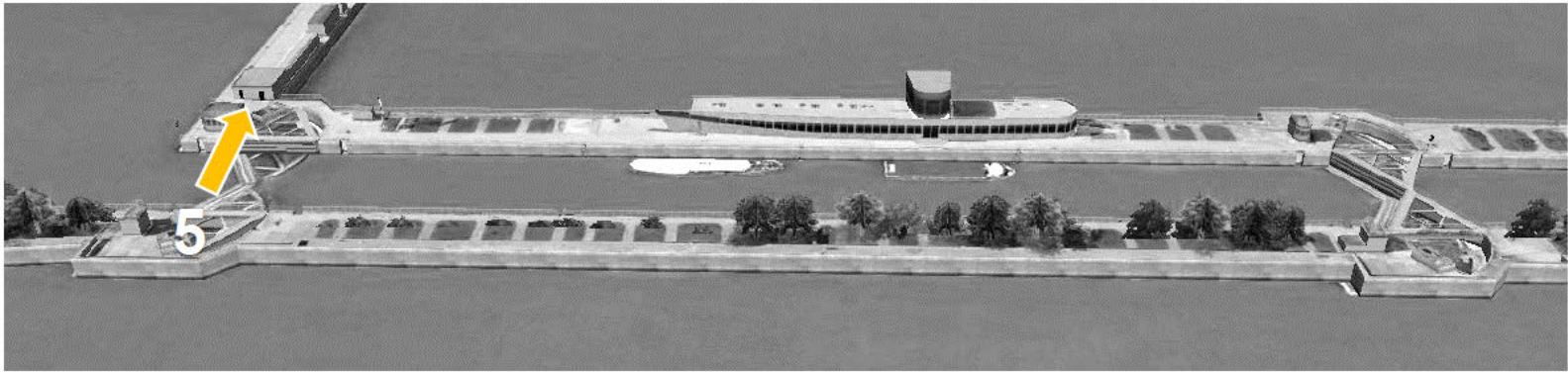
**US Army Corps  
of Engineers** ®  
Chicago District



**Photo 4.** View of Control House D (“D-House”) at the western end of the lock chamber at Chicago Harbor, facing south.



**US Army Corps  
of Engineers®**  
Chicago District



**Photo 5.** View of the maintenance / tool shop at the western end of the lock chamber at Chicago Harbor, facing north.