



DEPARTMENT OF THE ARMY
U.S. ARMY CORPS OF ENGINEERS, CHICAGO DISTRICT
231 SOUTH LASALLE STREET, SUITE 1500
CHICAGO IL 60604

February 27, 2025

Environmental & Cultural Resources Section
Planning Branch

Eric Otto
IDNR Coastal Management Program
Michael A. Bilandic Building
160 N. LaSalle Street, Suite 703
Chicago, Illinois 60601
Eric.Otto@Illinois.gov

Dear Mr. Otto:

The U.S Army Corps of Engineers, Chicago District (USACE) will be preparing two National Environmental Policy Act (NEPA) documents on the impacts associated with two proposed repairs. Proposed repairs include placement of 5,000 tons of stone at a breakwater within the Chicago Harbor in the City of Chicago, Cook County, Illinois and placement of 8,750 tons of stone at a breakwater within the Calumet Harbor in the City of Chicago, Cook County, Illinois. USACE is working to support the aging breakwater structures with stabilization measures required to maintain structural viability. The project limits for the efforts are entirely within the Chicago Harbor and Calumet Harbor respectively (Enclosure).

The proposed project at Chicago Harbor would involve placing armor stone on the harbor side of the breakwater from station 0+00 to 2+00 for a total of 200 feet. The proposed project at Calumet Harbor would involve placing armor stone on both sides of the breakwater from station 94+37 to 108+95 for a total of 1460 feet.

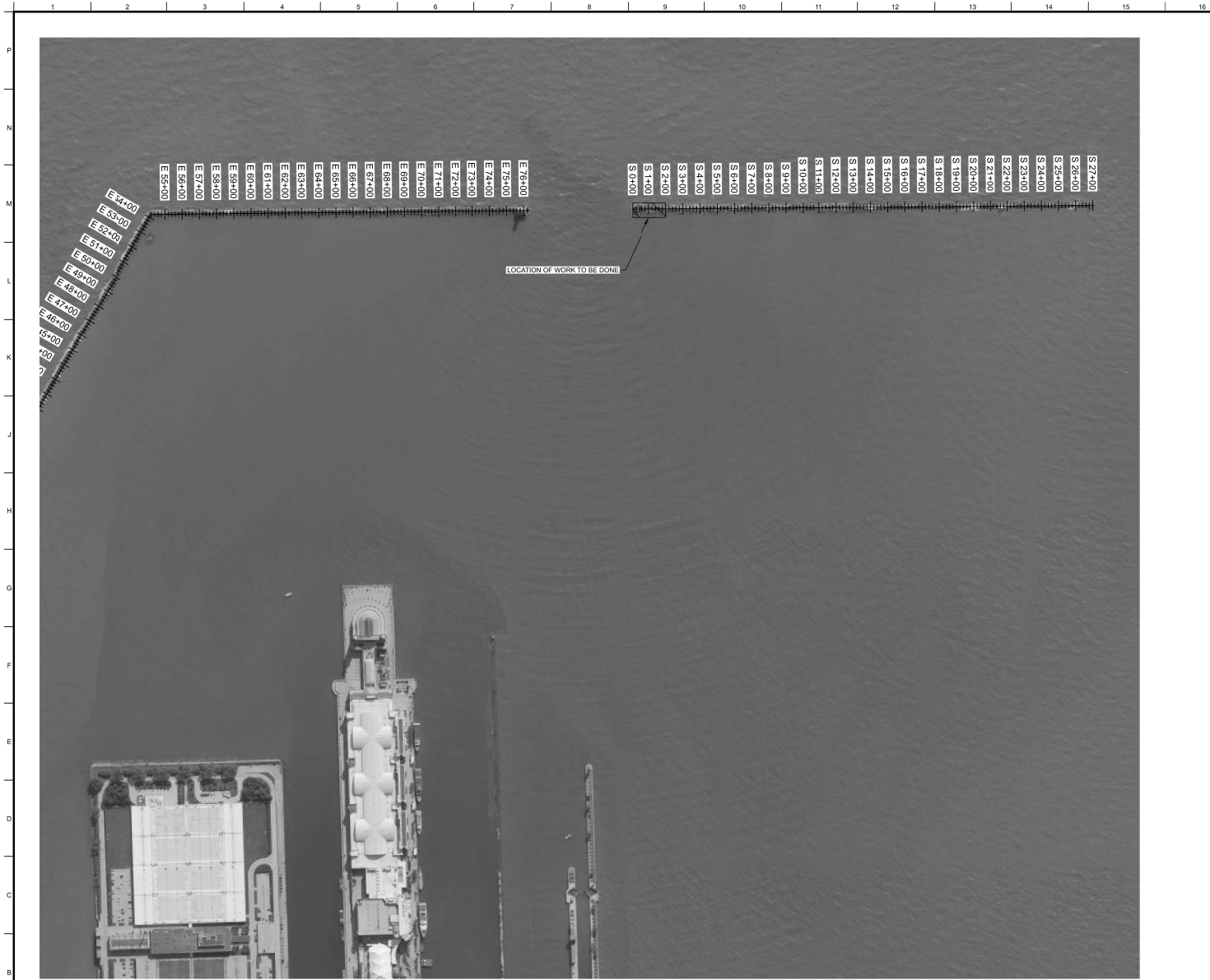
The proposed activities will not negatively impact coastal use or resources and complies with Illinois' approved coastal management program and will be conducted in a manner consistent with such policies. The Chicago District is requesting concurrence with this federal consistency determination from the IDNR/CMP.

Questions and communications can be submitted to Ms. Laila Ismail by email at laila.m.ismail@usace.army.mil or by phone at (312) 846-5589.

Sincerely,

(acting for)
Alex Hoxsie
Chief, Environmental & Cultural Resources
Planning Branch

Enclosure
1) Project Maps



GENERAL NOTES

1. PLACE STONE ON THE HARBOR SIDE ONLY.
2. SEE SHEET C-101 FOR THE SITE PLAN FOR THE BREAKWATER REPAIR AND THE TYPICAL CROSS SECTION.
3. 5,000 TONS OF 3-7 TON GNEISSIC GRANITE IS TO BE PLACED AT CHICAGO HARBOR FROM S 0+00 TO S 2+00.

SHEET INDEX

1. G-001 GENERAL SHEET
2. C-101 WORK LOCATION



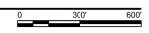
MARK	DESCRIPTION	DATE

DESIGNED BY: DRAWN BY: CHECKED BY: SUBMITTED BY: DATE:	ISSUE DATE:	SOLICITATION NO.:
	CONTRACT NO.:	PROJECT ID:
U.S. ARMY CORPS OF ENGINEERS CHICAGO DISTRICT 221 S. CHICAGO AVENUE CHICAGO, ILLINOIS 60604		
FILE NAME:	FILE SIZE:	FILE DATE:
ANSI D P2-C001 G-001.dgn		

FLOATING PLANT MAINTAIN P/YA

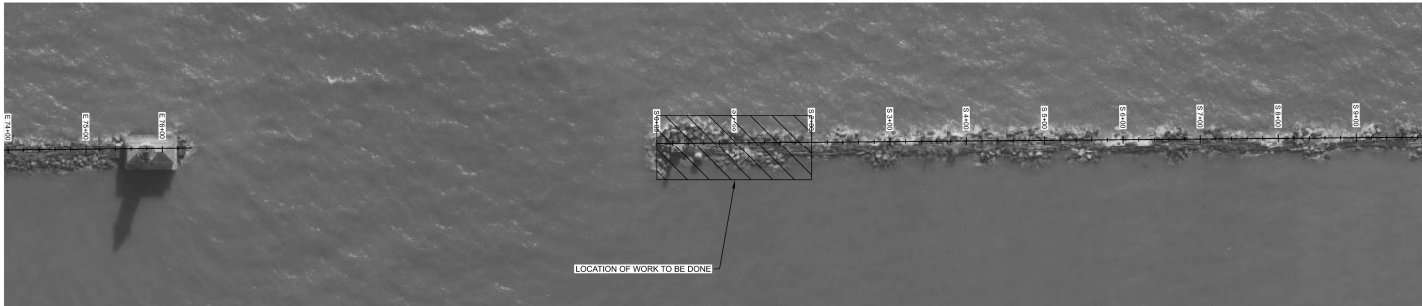
COVER SHEET

A1 CHICAGO HARBOR WORK LOCATION
SCALE: 1"= 300'



SHEET IN

G-001

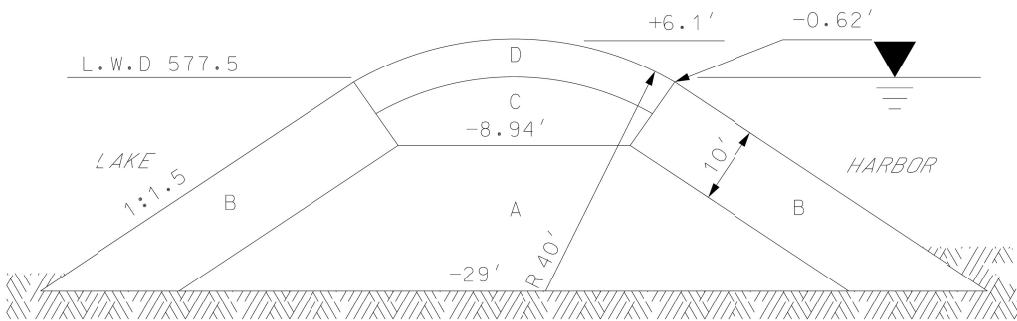


K1 CHICAGO HARBOR WORK LOCATION
SCALE: 1"=80'



GENERAL NOTES

1. PLACE STONE ON THE HARBOR SIDE ONLY.
2. SEE SHEET C-101 FOR THE SITE PLAN FOR THE BREAKWATER REPAIR AND THE TYPICAL CROSS SECTION.
3. 5,000 TONS OF 3-7 TON GNEISSIC GRANITE IS TO BE PLACED AT CHICAGO HARBOR FROM S 0+00 TO S 2+40.



SOUTHERLY EXTENSION

REACH G
YEAR OF COMPLETION 1920

A1 SOUTHERLY EXTENSION DETAIL
SCALE: 1"=5'

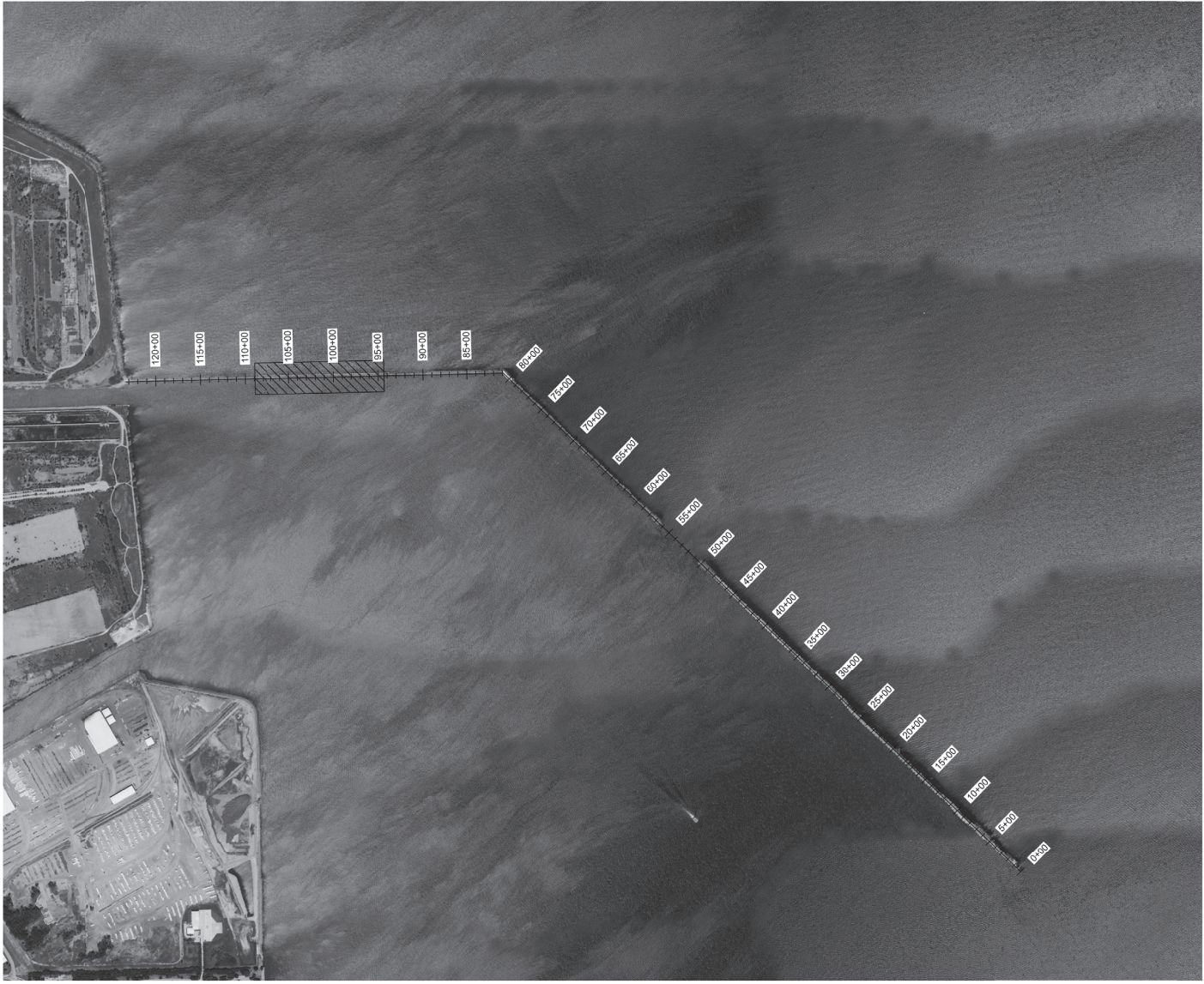


MARK	DESCRIPTION	DATE

DESIGNED BY: J. SUTTON	ISSUE DATE:
DRAWN BY: R. MUHAMMAD	SOLICITATION NO.:
SUBMITTED BY:	CONTRACT NO.:
SIZE:	PROJECT ID:
FILE NAME:	FILE NO.:
ANESD:	PP-20W C-101.09M

FLOATING PLANT MAINTAIN P-24
WORK LOCATION

SHEET IN
C-101



GENERAL NOTES

1. 8,750 TONS OF 3-7 TONS OF NON-SEDIMENTARY STONE IS TO BE PLACED AT CALLUMET HARBOR.
2. STONE NEEDS TO BE PLACED ON BOTH SIDES OF THE BREAKWATER STRUCTURE FROM STA. 94+37 TO 108+85.



MARK	DESCRIPTION	DATE

U.S. ARMY CORPS OF ENGINEERS CHICAGO DISTRICT 201 S. LA SALLE ST. 9TH FLOOR CHICAGO, ILLINOIS 60604	ISSUE DATE:	
	DESIGNED BY: RAJANWAR	SOLICITATION NO.:
	CHECKED BY: A. SUTTON	CONTRACT NO.:
	SUBMITTED BY:	PROJECT ID:
	FILE NAME:	
	ANSI D:	CALLUMET GATERSPANT.G001.dgn

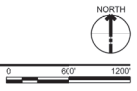
FLOODING PLANT MAINTAIN FY23

PROJECT LOCATION OVERVIEW

SHEET ID

G-001

A1 PROJECT LOCATION
SCALE: 1" = 600'

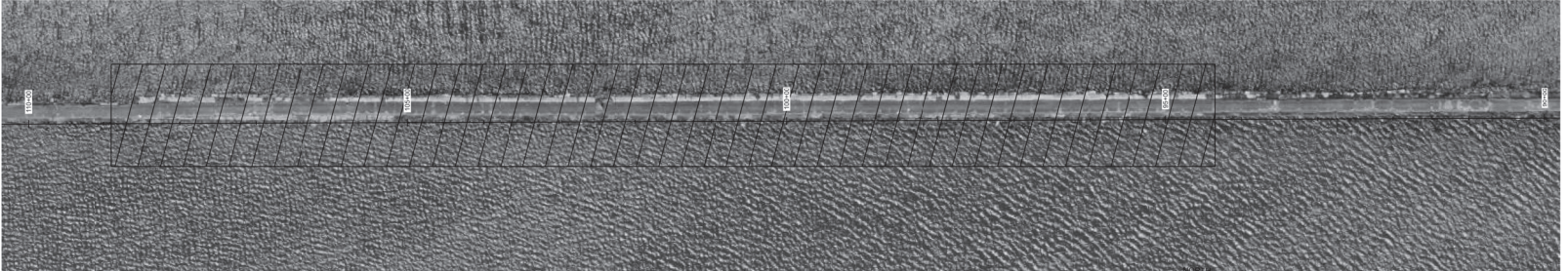
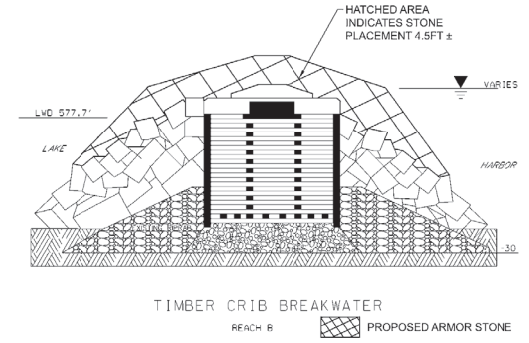


1 2 3 4 5 6 7 8 9 10 11 12 13 14 15 16 17 18 19 20

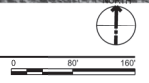
P
N
M
L
K
J
H
G
F
E
D
C
B
A

GENERAL NOTES

1. 8,750 TONS OF 3-7 TONS OF NON-SEDIMENTARY STONE IS TO BE PLACED AT CALLUMET HARBOR.
2. STONE NEEDS TO BE PLACED ON BOTH SIDES OF THE BREAKWATER STRUCTURES FROM STA. 94+37 TO STA. 108+95.




A1 STONE PLACEMENT LOCATION STA. 94+37 TO 108+95
SCALE: 1"= 80'



CALUMET FLOATING PLANT C-101-80P DS

PD: 14-04-05 12/05/2024



**US Army Corps
of Engineers**

MARK	DESCRIPTION	DATE

ISSUE DATE:	DRAWN BY:	SOLICITATION NO.:	CONTRACT NO.:
DESIGNED BY:	CHECKED BY:	PROJECT ID:	SUBMITTER'S FILE NAME:
U.S. ARMY CORPS OF ENGINEERS CHICAGO DISTRICT 201 N. LAKE ST., 5TH FL. CHICAGO, IL 60606	J. SUTTON	CALUMET DAMSPANT_C-01-80P	ANSI.D

FLOATING PLANT MAINTAIN FY23

STONE PLACEMENT LOCATION

SHEET ID:

C-101