

# Wooden Dollars

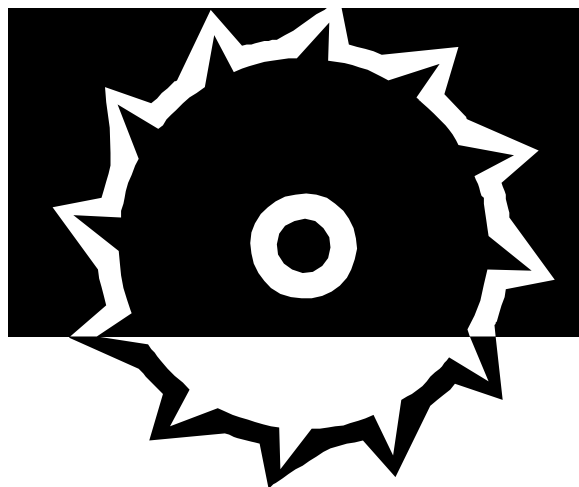
## Monthly February, 2017

### Inside this issue:

Forest Growth	1
Purpose/policy	2
Marked Timber	3-6
Buy/Sell Products	7
Buyers Act	8
Illinois Forest Map	9
District Foresters	10

### Facts On Forest Growth . . .

Forest area in the U.S. increased by nearly 8,000 acres per day from 2007 to 2012. The volume of wood in U.S. timberlands increased 16 million cu.ft. over that 5-year period, enough to fill 159 Empire State Buildings per year. In 2015 alone, the U.S. recovered enough recycled paper to fill 125 Empire State Buildings. From 2005 to 2015, U.S. forests stored 169 million metric tons of carbon per year, equivalent to taking 137 million cars off the road every year.



**Buy, Sell and Saw Illinois Wood!**

Source: *Two Sides*, December 7, 2016.

Honing in on our state of Illinois, as outlined in the USDA Forest Service assisted publication *Illinois Forests 2010*: "While there was a sharp rise and fall between 1998 and

2010, the overall rate of growing-stock growth on Illinois timberland has steadily increasing since 1962. Ninety-eight percent of net growth resulted from growth in hardwoods. The highest growth rates occurred in the soft maple (primarily due to silver maple), select white oaks, other eastern soft

hardwoods, and other red oaks species groups. Collectively, Illinois' major oak species (white, northern red, bur, and black) account for 18 percent of total growth; this represents a decrease from 1998 and 2005 when oaks represented 23 percent of total growth. The bulk of growth occurred in large diameter stands (57 percent); 98 percent of net growth in white, northern red, bur, and black oaks was in large diameter stands."

### Wood Carbon Calculator:

WoodWorks-Wood Products Council ([www.woodworks.org](http://www.woodworks.org)) provides free project assistance as well as education and resources related to construction of non-residential and multi-family wood buildings.

Anyone may access the carbon calculator at [www.woodworks.org/carbon-calculator](http://www.woodworks.org/carbon-calculator).



## Wooden Dollars Monthly

is published on the first of each month by Illinois Division of Forest Resources to provide woodland owners market outlets for forest products, to protect and sustain the woodland resources of Illinois, and help supply industry with information and raw materials—all for the benefit of society. This document is a PDF available electronically and posted on the IDNR Forest Resources website.

### Policy Statements:

Illinois forests and woodlands are critical to the citizens of Illinois and globally far beyond the singular value of wood and fiber production. The Division of Forest Resources integrates and requires on state land and cooperating private lands that important other concerns of soil, water, wildlife, habitats, recreation, aesthetics and cultural resources are addressed while growing, harvesting and regenerating forests. We advocate and outreach forest management principles to all Illinois forest owners.

Demands on Illinois forest resource for all goods and services the forest can provide continue to increase while nearly 90% of Illinois forests remain privately owned. To conserve, enhance and expand the benefits and critical function of Illinois forests it is necessary that forest landowners, government agencies, forest industry and citizens at large work together.

Equal opportunity to participate in programs of the Illinois Department of Natural Resources and those funded by the U.S. D.A. and other agencies is available to every individual regardless of race, sex, national origin, disability, age, religion, or other non-merit factors. If you believe you have been discriminated against contact civil rights office and/or the Equal Opportunity Officer, IDNR, One Natural Resources Way, Springfield, IL 62702-1271; 217-785-0067; TTY 217-782-9175.

### Contact Information

Illinois Department of Natural Resources  
1 Natural resources Way \* Springfield, IL 62702  
Office of Resource Conservation—Division of Forest Resources  
<https://www.dnr.illinois.gov/conservation/Forestry/Pages/default.aspx>  
Forest Utilization & Marketing Program  
Editor, [Paul.Deizman@illinois.gov](mailto:Paul.Deizman@illinois.gov) 217-782-3376

*“Sadly, it's much easier to create a desert than a forest.”*

*James Lovelock*



## Marked Timber: Stumpage For Sale

This newsletter is posted on the IDNR Forest Resources website monthly. Deadline for each monthly issue is the third Thursday of the month prior. All submissions of marked timber for sale by consulting foresters, procurement foresters or others must be submitted by the second Thursday. Submissions by consulting foresters working with IFDA cooperators must adhere to the timber recommendations approved in the landowner's written management plan. Foresters working with landowners at-large must adhere to recommended silviculture for Illinois forest types. Submissions may be sent US Mail to "ORC-Forestry" at our Springfield office or by email to paul.deizman@illinois.gov.

The following **four sales** were marked for cutting by a forester of the Illinois Division of Forest Resources or was marked by a consulting forester or similar professional and reviewed by the Illinois Division of Forest Resources. Volumes have been estimated using the Doyle Rule unless otherwise indicated. Deductions have been made for defects. No volume is tallied for culls. Any interested buyers should contact the landowner or their representative directly. The Illinois Division of Forest Resources does not establish the selling price of timber. Buyers must show proof they are currently licensed or an agent of a licensee under the Illinois Timber Buyers

### Wooden Dollars February 2017 Sale #1

LOCATION	OWNER INFO.	SPECIES	#	BD.FT. DOYLE
<b>County:</b> Jo Daviess	<b>Name:</b> John Sturm	White Oak	133	22825
	4021 S Blanding	Northern Red		
<b>Twncshp:</b> Rice	<b>Addrss:</b> Road	Oak	83	16358
	SWQ Sec			
<b>Section:</b> 23;26	<b>Addrss:</b> Hanover, IL 61036	Black Walnut	59	7978
<b>Acres:</b>	<b>58 Phone:</b> (815) 291-4057	Sugar Maple	40	4202
		Elm	24	4490
		Miscl Upland	49	9727
		<b>TOTAL:</b>	<b>388</b>	<b>65580</b>

Miscl Upland includes:

9 American Basswood, 8 Green Ash, 7 Shagbark Hickory,  
7 Hackberry, 6 Bitternut Hickory, 5 Black Cherry, 4 Eastern Cottonwood, 1 Honeylocust,  
1 Quaking Aspen, 1 Boxelder

#### Bid/Offer Details :

Sealed bids will be opened at 4021 S Blanding Rd. Hanover, IL 61041 on February 10th at 1PM.

This is a lump sum sale. Trees have been marked with blue paint. All black walnuts are num-

To make arrangements to inspect the timber, contact Rick Viestelmeier (Property manager) at (815) 291-4057.

Sale is located in 2 separate parcels.

Contact Paul Bane at (217) 840- 7632 with any questions or to obtain maps. Seller reserves the right to reject any or all bids.  
Send Sealed bids to: [MidwestForestryUnlimited@gmail.com](mailto:MidwestForestryUnlimited@gmail.com) Or Midwest Forestry Unlimited 712 Franklin St. Galena, IL 61036

## Timber: Stumpage For Sale .... Cont'd

Wooden Dollars February 2017 SALE #2

LOCATION	OWNER INFO.	SPECIES	# TREES	BD.FT.	DOYLE
<b>County:</b> Stephenson	<b>Name:</b> Steve Buss	American Bass	26	6342	
<b>Twncshp:</b> 28	<b>Addrss:</b> Galena Road	Black Walnut	21	4732	
<b>Section:</b> SWQ Sec 29	<b>Addrss:</b> Lena, IL 61048	Green Ash	7	2512	
<b>Acres:</b>	<b>8 Phone:</b> (815) 275-3252	Black Cherry	7	1111	
		White Oak	4	766	

Misc Upland	10	2249
<b>TOTAL:</b>	<b>75</b>	<b>17712</b>

Misc Upland includes: 4 Elm, 3 Sugar Maple, 1 Hackberry,  
1 Northern Red Oak

### Bid/Offer Details (if any):

Sealed bids will be opened at 712 Franklin St. Galena, IL on February 10th at 2PM.

This is a lump sum sale. Trees have been marked with blue paint. All black walnuts are numbered.

The property is south of 11755 West Galena Road (house), and north of St. Johns Lutheran Church.

To make arrangements to inspect the timber, contact Paul Bane (217) 840-7632.

Contact Paul Bane at (217) 840- 7632 with any questions or for maps.

Send Sealed bids to: MidwestForestryUnlimited@gmail.com or by US Mail

Send Sealed bids to: Midwest Forestry Unlimited 712 Franklin St. Galena, IL 61036 or by Email

Seller reserves the right to reject any or all bids.

## Timber: Stumpage For Sale .... Cont'd

Wooden Dollars February 2017 SALE #3

LOCATION	OWNER INFO.	SPECIES	# TREES	BD.FT. DOYLE
<b>County:</b> Cass	<b>Name:</b> Ron Kuhlmann	Walnut	163	38625
<b>Twنشp:</b> 18N11W	<b>Addrss:</b> 13476 Chandlerville Rd	Red oak	42	15625
<b>Section:</b> 10	<b>Addrss:</b> Beardstown, IL. 62618	Basswood	43	9875
<b>Acres:</b> 90	<b>Phone:</b> 217-248-0907	Hackberry	22	6800
		Chinquapin	16	3525
		Ash	13	3900
		Black oak	8	2175
		White oak	6	1775
		Hickory	6	1650
		Miscl Upland	6	16780
<b>TOTAL:</b>			<b>325</b>	<b>85620</b>

Miscl Upland includes: 2 Bur oak, 3 elm, 1 cherry

### Bid/Offer Details (if any): Bid/Offer Details :

\*Sealed bids will be accepted by the owner until 1:00 PM CDT February 13, 2017 and will be opened at that time.

Location of the bid opening is: 13476 Chandlerville Rd, Beardstown, IL 62618

\*325 Trees are marked with pink paint on the main stem and at the base. \*Misc includes 2 Bur oak, 3 Elm, 1 Cherry.

\*Doyle Rule was used as a basis for volume estimate: Allowances were made for cull and defect.

\*In addition there were 8 cull trees marked with an X, of which no volume was tallied; these trees must be cut or killed.

\*Buyers must satisfy themselves as to the quality and quantity of the timber offered.

\*The right to reject any or all offers is retained by the sellers.

## Timber: Stumpage For Sale .... Cont'd

Wooden Dollars February 2017 SALE #4

LOCATION	OWNER INFO.	SPECIES	# TREES	BD.FT. DOYLE
<b>County:</b> Schuyler	<b>Name:</b> Gordon Tingley	White oak	62	14475
<b>Twtnshp:</b> 2N - 1E	<b>Addrss:</b> 1220 Jefferson St	Red oak	71	27550
<b>Section:</b> 4	<b>Addrss:</b> Beardstown, IL. 62618	Black oak	72	24450
<b>Acres:</b> 46	<b>Phone:</b> 217-257-2397	Hard maple	41	7800
	<b>email:</b> <a href="mailto:gtingley@sbcglobal.net">gtingley@sbcglobal.net</a>	Hickory	17	4600
		Basswood	11	3150
		Walnut	10	2550
		Cottonwood	29	13950
		Ash	6	1100
		Misc	11	3140
		<b>TOTAL:</b>	<b>330</b>	<b>102765</b>

Cull 11

Miscl Upland includes:

5 Sycamore, 5 Elm, 1 locust. Black oak incl 1 Shingle oak

### Bid/Offer Details (if any):

\*Timber Sale Requirements: Illinois Best Management Practices (BMP's) are required for this sale and shall be explicitly stated in the landowner's timber sale contract.

\*Sealed bids and email bids only will be accepted by the owner until 1:00 PM CDT February 15th, 2017.

All bids will be opened at 1:00 P.M. at location of the bid opening: 700 South 10th St. Havana, IL. 62644

\* 330 trees are marked with blue paint on the bole and at the base.

\*Doyle Rule was used as a basis for volume estimate: Allowances were made for cull and defect.

\*An additional 11 cull trees marked with an X have no tallied volume; they must be cut or killed.

\*Buyers must satisfy themselves as to the quality and quantity of the timber offered.

\*The right to reject any or all offers is retained by the sellers.

## Forest Products Buy & Sell

Approved postings of lumber, wood products or other items, equipment or services related to the forest products industry, wood use and wood utilization—for sale or wanted—can be advertised within this newsletter which is posted on the IDNR Forest Resources website monthly. Submit your accurate, concise advertising request with contact information to Paul Deizman at the Division of Forest Resources by email [paul.deizman@illinois.gov](mailto:paul.deizman@illinois.gov) or other means. Deadline for each monthly issue is the third Thursday of the month prior. All submissions will be reviewed for approval. We reserve the right to condense or omit certain items or requests.

Contact advertisers below to buy and/or sell the following forest products or related items, equipment and/or services:

### WANTED

#### **Used WOOD-MIZER Sawmill wanted:**

Seek affordable basic or older model; can need maintenance/work if sound & straight!

Mike Schmeling  
301 Sheldon Street  
Dowagiac, MI 49047  
(269) 277-6622 *cell or text*



***Foresters and  
Loggers Needed! ...  
for stewardship  
and profitability in  
your woodland .***

### ***Illinois Timber Buyer Licensing:***

The Illinois Timber Buyer Licensing Act (225 ILCS 735) requires anyone purchasing timber must be licensed and follow the rules of the act designed to protect forest landowner's. Nearly 400 Illinois Timber Buyers are now licensed in 2016. All are required to report all purchases of standing timber or logs from landowners to the Division of Forest Resources quarterly and assure the landowner's 4% harvest fee is submitted for each transaction.

## **The Illinois Timber Buyer Licensing Act defines the following:**

"Timber" means ... trees, standing or felled, and parts thereof which can be used for sawing or processing into lumber for building or structural purposes or for the manufacture of any article.

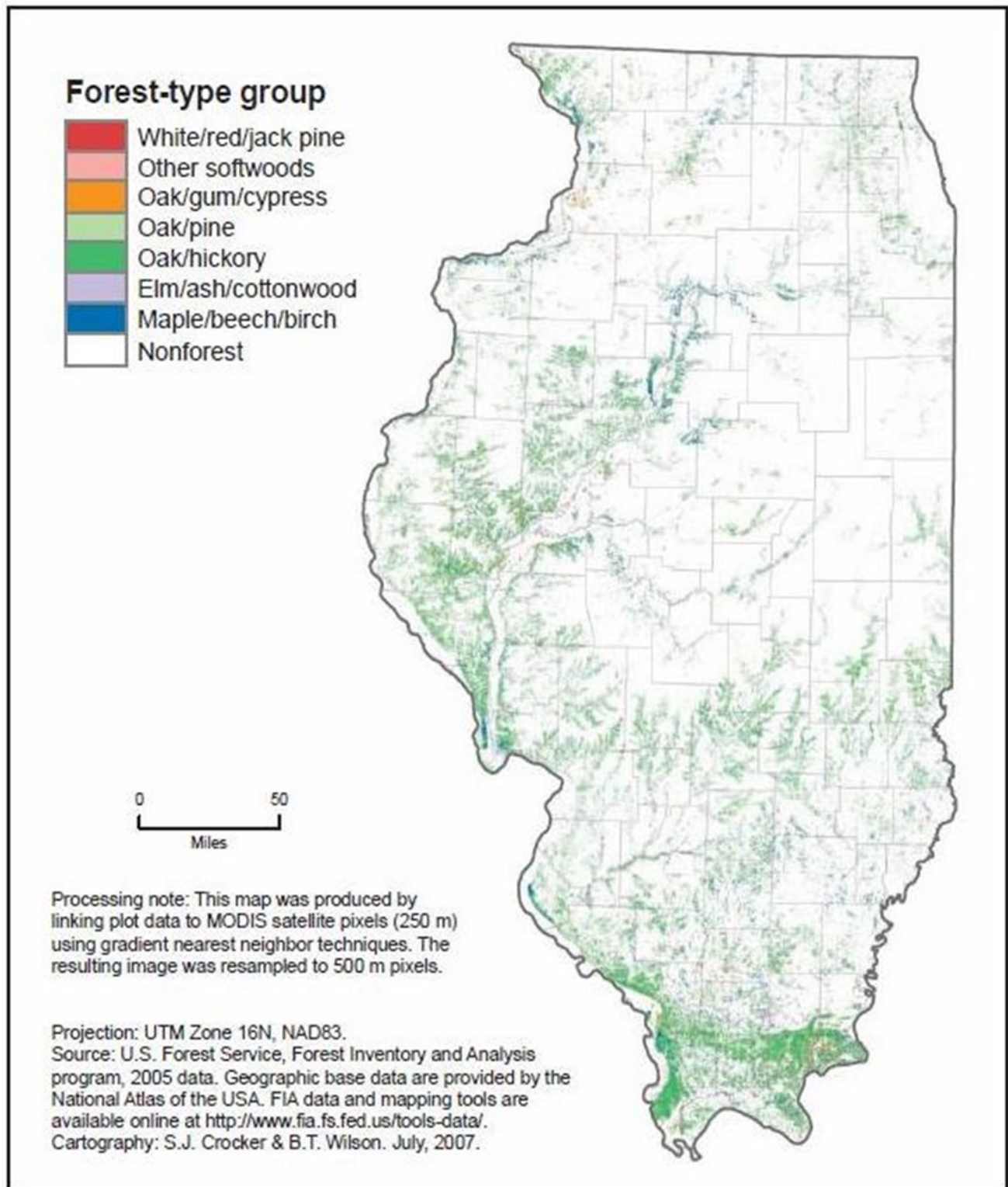
"Timber buyer" means ... any person licensed or unlicensed, who is engaged in the business of buying timber from the timber growers thereof for sawing into lumber, for processing or for resale, but does not include any person who occasionally purchases timber for sawing or processing for his own use and not for resale.

"Buying timber" means ... to buy, barter, cut on shares, or offer to buy, barter, cut on shares, or take possession of timber, with or without the consent of the timber grower.

"Timber grower" means ... the owner, tenant or operator of land in this State who has an interest in, or is entitled to receive any part of the proceeds from the sale of timber grown in this State and includes persons exercising authority to sell timber.



## Forests in Illinois—a map:



# Illinois DNR Division of Forest Resources

## District Forester Field Offices

May 01, 2016

Jeff Harris  
Mississippi Palisades SP  
16327 IL Rt. 84 N  
Savanna, IL 61074  
815-273-2768  
[Jeff.Harris@illinois.gov](mailto:Jeff.Harris@illinois.gov)

Barrie McVey  
Argyle Lake SP  
640 Argyle Park Rd  
Colchester, IL 62326  
309-776-5271  
[Barrie.Mcvey@illinois.gov](mailto:Barrie.Mcvey@illinois.gov)

Steve Felt  
1510 46th Ave  
Rock Island, IL 61201  
309-788-0419  
[Stephen.Felt@illinois.gov](mailto:Stephen.Felt@illinois.gov)

Randy Timmons  
P.O. Box 860  
124 W. William St  
Seneca, IL 61360  
815-357-8846  
[Randy.Timmons@illinois.gov](mailto:Randy.Timmons@illinois.gov)

Scott Lamer  
217-285-2221  
1252 W Washington  
Pittsfield, IL 62363  
[Scott.Lamer@illinois.gov](mailto:Scott.Lamer@illinois.gov)

Matt Peterson  
700 South 10th  
Havana, IL 62644  
309-543-3401  
[Matt.Peterson@illinois.gov](mailto:Matt.Peterson@illinois.gov)

Tom Wilson  
604 E. Franklin  
Jerseyville, IL 62052  
618-498-1627  
[Tom.Wilson@illinois.gov](mailto:Tom.Wilson@illinois.gov)

Mark Koch  
Eldon Hazlet SP  
20100 Hazlet Park Rd  
Carlyle, IL 62231  
618-594-4475  
[Mark.Koch@illinois.gov](mailto:Mark.Koch@illinois.gov)

Mark Brown  
World Shooting and  
Recreational Complex  
One Main Event Dr. Suite  
140 Sparta, IL 62286  
618-295-2877  
[Mark.V.Brown@illinois.gov](mailto:Mark.V.Brown@illinois.gov)

Benjamin Snyder  
Lake Murphysboro SP  
52 Cinder Hill Drive  
Murphysboro, IL 62966  
618-565-2828  
[Benjamin.snyder@illinois.gov](mailto:Benjamin.snyder@illinois.gov)

David Griffith  
Chain O Lakes SP  
8916 Wilmot Rd  
Spring Grove, IL 60081  
815-675-2386  
[Dave.Griffith@illinois.gov](mailto:Dave.Griffith@illinois.gov)

Tom Gargrave  
30550 Boathouse Rd  
Wilmington, IL 60481  
815-476-0109  
[Tom.Gargrave@illinois.gov](mailto:Tom.Gargrave@illinois.gov)

Shane McDearmon  
1660 West Polk Ave  
Charleston, IL 61920  
217-348-0174  
[Shane.Mcdearmon@illinois.gov](mailto:Shane.Mcdearmon@illinois.gov)

Wade Bloemer  
Stephen Forbes SP  
6924 Omega Road  
Kinmundy, IL 62854  
618-547-3477  
[Wade.Bloemer@illinois.gov](mailto:Wade.Bloemer@illinois.gov)

David Johnson  
106 Andrews Dr.  
Fairfield, IL 62837  
618-847-3781  
[David.N.Johnson@illinois.gov](mailto:David.N.Johnson@illinois.gov)

David Allen  
Dixon Springs SP  
945 State Hwy 146W  
Golconda, IL 62938  
618-949-3729  
[David.H.Allen@illinois.gov](mailto:David.H.Allen@illinois.gov)

