

zebra swallowtail

Eurytides marcellus

FEATURES

The zebra swallowtail has a wingspan of about two and one-half to four inches. Its wings are pale green-white with black stripes. The projection from the rear edge of the hindwing, the “tail,” is fairly long. The larva is green with yellow and black bands.

BEHAVIORS

The zebra swallowtail may be found statewide in Illinois. The larva eats leaves of pawpaw trees and related plants. The adult flies close to the ground, flapping slowly. The adult feeds on flower nectar.

TAXONOMY

Kingdom: Animalia
Phylum: Arthropoda
Class: Insecta
Order: Lepidoptera
Family: Papilionidae

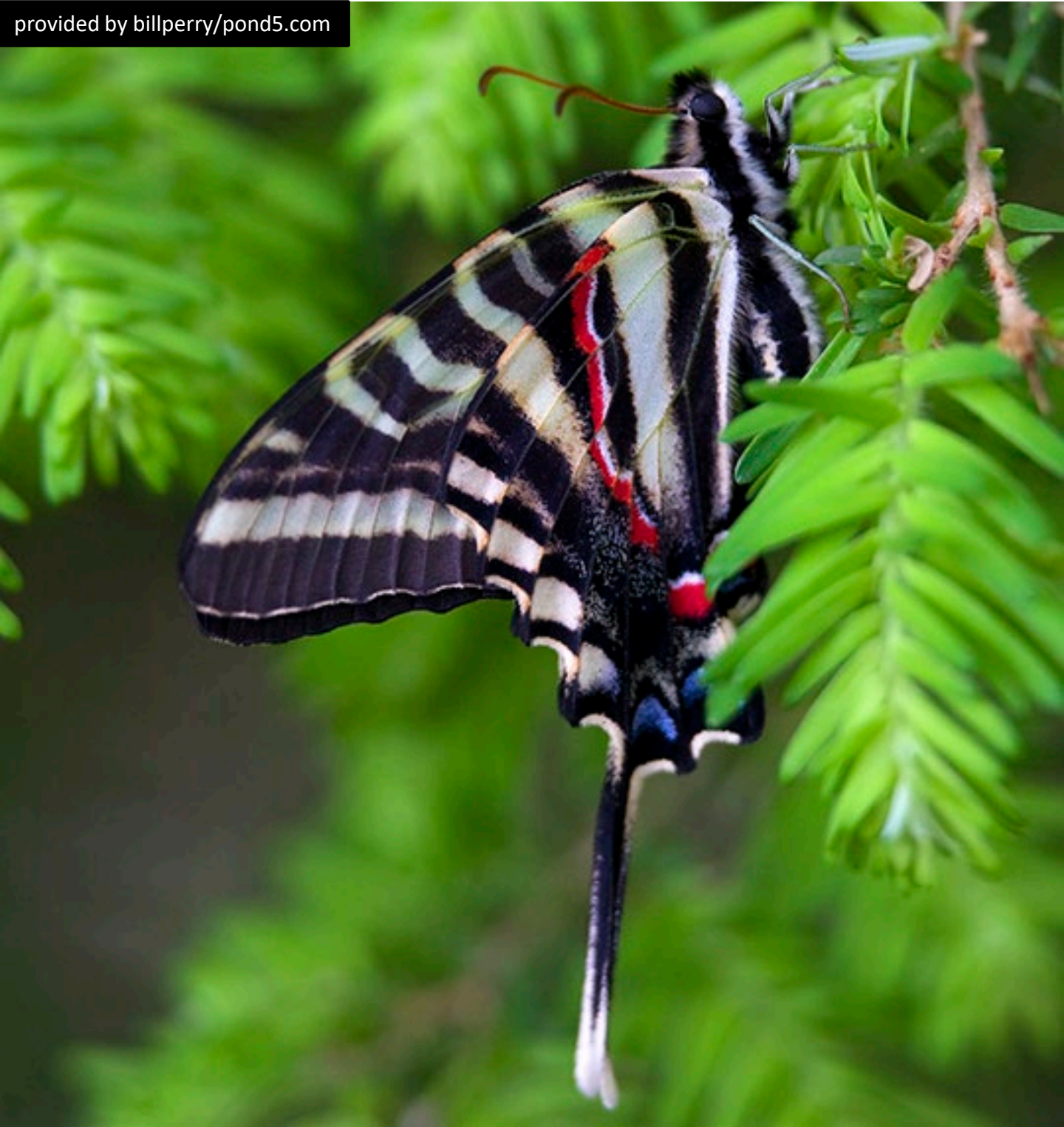
ILLINOIS STATUS

common, native

ILLINOIS RANGE



provided by billperry/pond5.com



© David W. Brewer



© David W. Brewer



Aquatic Habitats

bottomland forests

Woodland Habitats

bottomland forests; coniferous forests; southern Illinois lowlands;
upland deciduous forests

Prairie and Edge Habitats

none