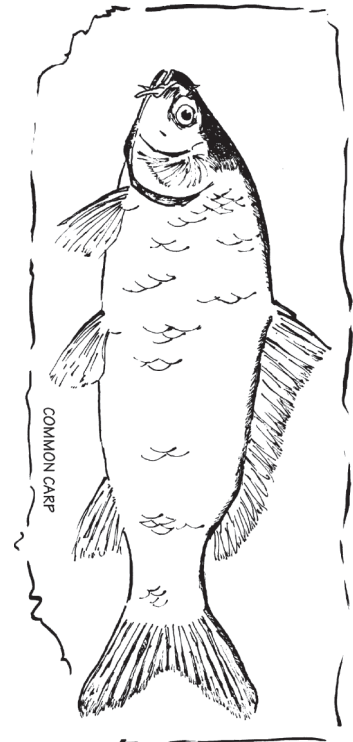


Aquatic Exotic Species Fact Cards



The *Aquatic Exotic Species Fact Cards* can be used to support the lessons in Units 1, 2 and 3. They can also be used independently for students to learn more about these species and to encourage further research.

STUDENT ACTIVITY | Aquatic Exotic Species Fact Cards



common carp

Cyprinus carpio

Kingdom Animalia

Phylum Chordata

Superclass Osteichthyes

Class Actinopterygii

LOCATION – statewide - exotic

FEATURES – two barbels on each side of lower jaw; introduced in the late 1800s; native to Asia

HABITAT – lakes, ponds, rivers

HABITS – bottom forager; feeds in late evening and early morning





**purple
loosestrife**
Lythrum salicaria

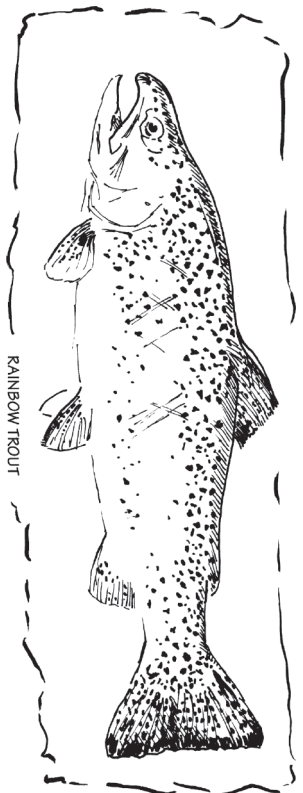
Kingdom Plantae
Division Tracheophyta

LOCATION – mainly northern and northeastern Illinois - exotic

FEATURES – can distribute two million seeds per year; no native predators; native to Europe and Asia; in Illinois since about 1940

HABITAT – disturbed, moist soils; marshes; lake shores

HABITS – forms dense stands; animals will not eat it; crowds out native species



rainbow trout
Salmo gairdneri

Kingdom Animalia
Phylum Chordata
Superclass Osteichthyes
Class Actinopterygii

LOCATION – Lake Michigan and inland lakes where stocking occurs - exotic

FEATURES – native to the Pacific coast of North America; pink stripe on side; adipose fin; introduced in the 1920s

HABITAT – water bodies with cool temperatures

HABITS – eats insects, snails and small fishes





zebra mussel

Dreissena polymorpha

Kingdom Animalia

Phylum Mollusca

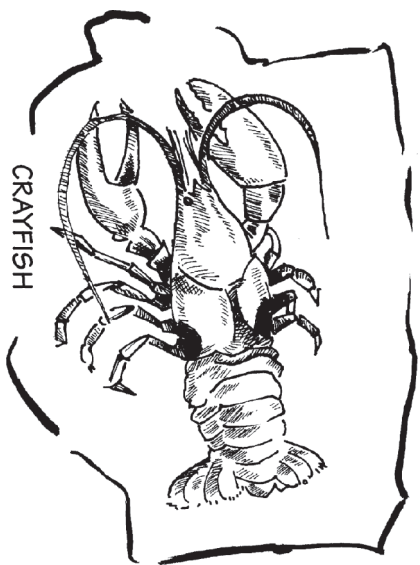
Class Bivalvia

LOCATION – Lake Michigan and large rivers - exotic

FEATURES – found in Illinois waters in 1990; may produce up to one million eggs at once; native to Caspian Sea region of Asia

HABITAT – lakes, rivers

HABITS – filter feeder; will attach to nearly anything in water



rusty crayfish

Orconectes rusticus

Kingdom Animalia

Phylum Arthropoda

Class Malacostraca

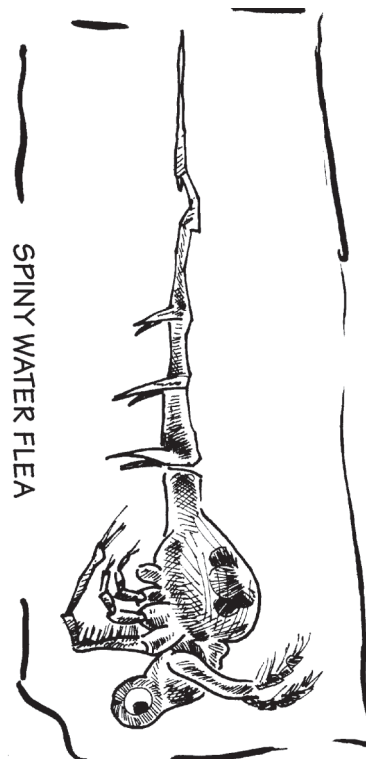
LOCATION – Lake Michigan; Fox, Illinois and Rock river systems - exotic

FEATURES – native to Ohio, Kentucky and Tennessee; large red spot on each side of carapace; believed to have been introduced in the 1970s

HABITAT – streams and lakes

HABITS – aggressive; reduces aquatic vegetation





SPINY WATER FLEA

spiny water flea

Bythotrephes cederstroemi

Kingdom Animalia

Phylum Arthropoda

Class Branchiopoda

LOCATION – Lake Michigan, possibly some inland lakes - exotic

FEATURES – native of Europe; present in Illinois by 1987; reproduces rapidly; long, barbed tail spine

HABITAT – cool, deep lakes

HABITS – eats plankton



Equal opportunity to participate in programs of the Illinois Department of Natural Resources (IDNR) and those funded by the U.S. Fish and Wildlife Service and other agencies is available to all individuals regardless of race, sex, national origin, disability, age, religion or other non-merit factors. If you believe you have been discriminated against, contact the funding source's civil rights office and/or the Equal Employment Opportunity Officer, IDNR, One Natural Resources Way, Springfield, IL 62702-1271; 217/785-0067; TTY 217/782-9175. This information may be provided in an alternative format if required. Contact the DNR Clearinghouse at 217/782-7498 for assistance.

Aquatic Illinois © 2011, Illinois Department of Natural Resources
DNR 156 – 6/12 • IOCI 12-0831