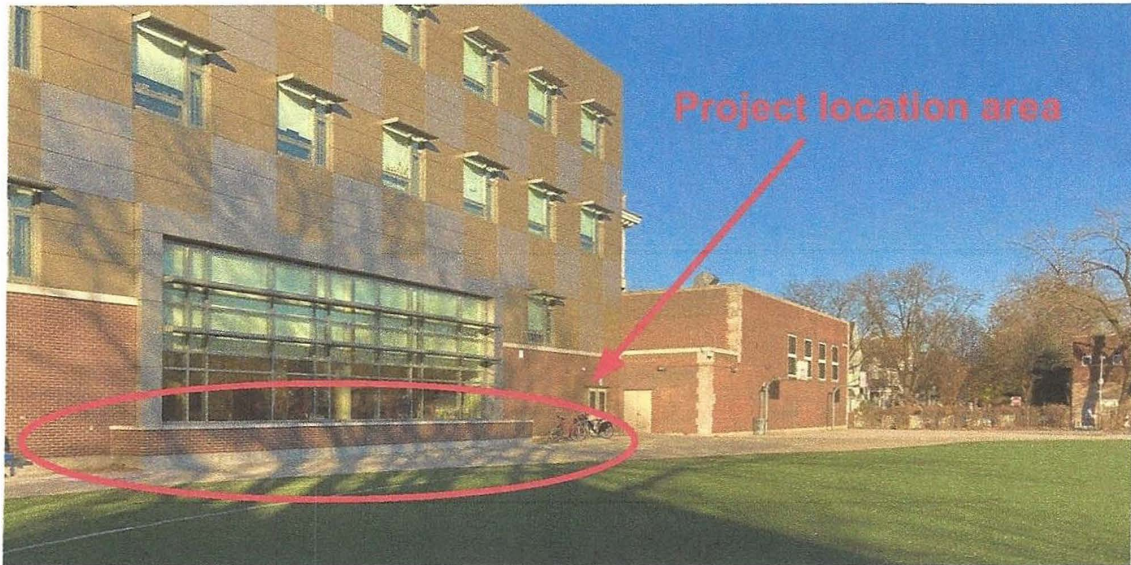




Project Location Area

NORTH

EAST



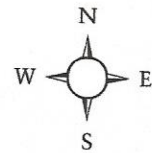
View of project location area facing northeast.

EAST

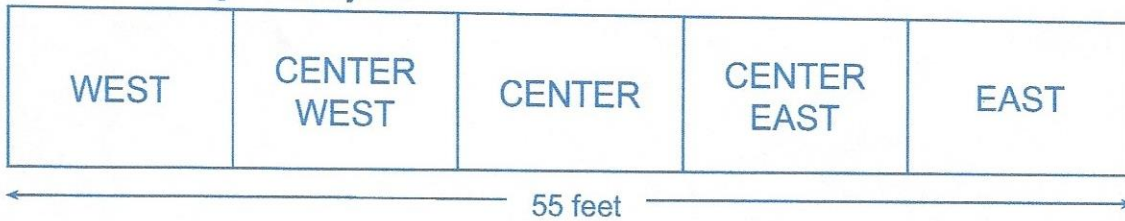


The project is located on the south side of the school in an enclosed area 55 feet long x 2.5 wide with a height that ranges from 3.3 feet on the west end to 2.9 feet on the east end.

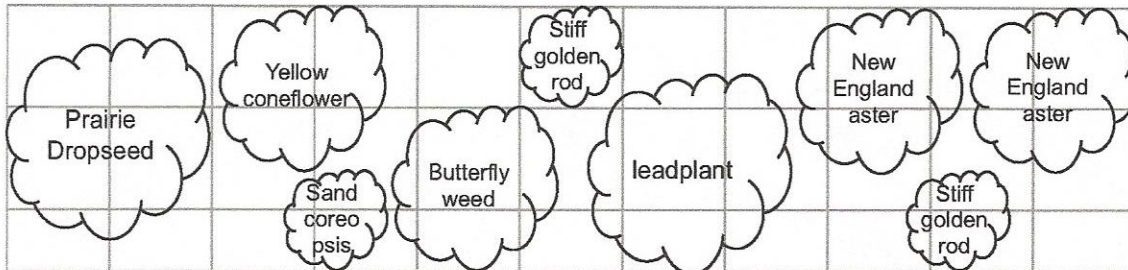
Project Layout



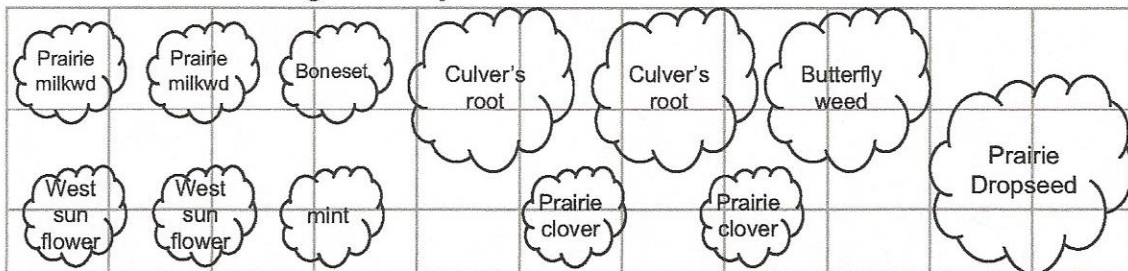
OVERALL segment layout



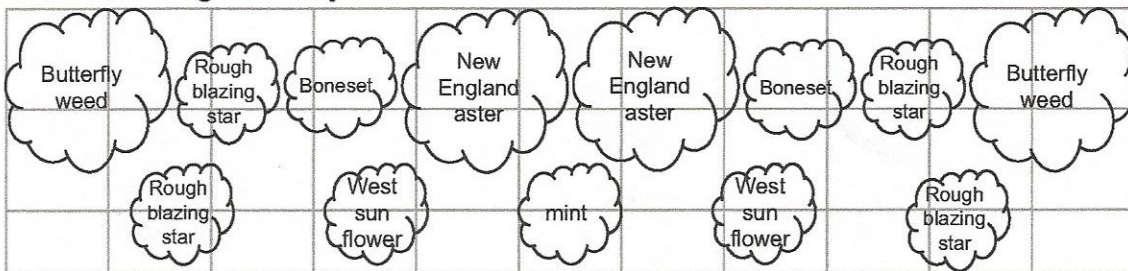
WEST segment layout



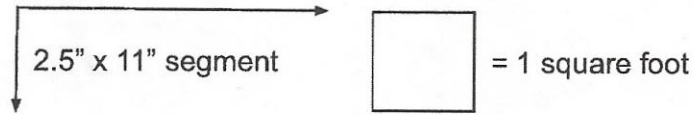
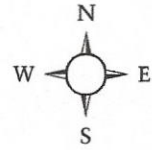
CENTER WEST segment layout



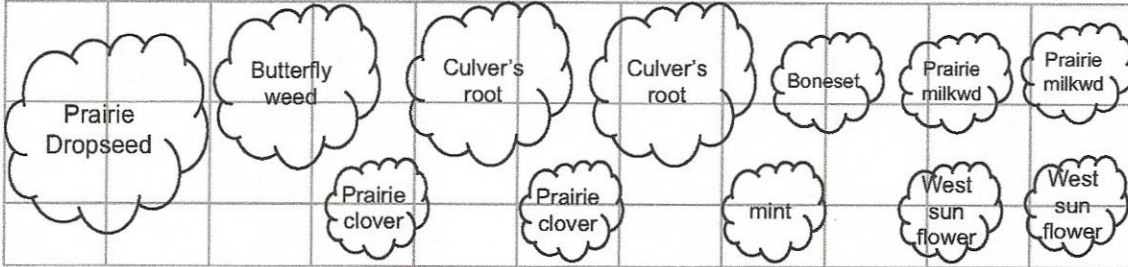
CENTER segment layout



Project Layout - Continued



CENTER EAST Segment Layout



EAST Segment Layout

