

Illinois & Michigan Canal - National Heritage Corridor
Civic Center Authority
P.O. Box 501
Willow Springs, IL 60480
Stan Johnson - Representative

6 May 1998

Dear Stan:

I will try to explain the map and booklet I turned over to you concerning the study at Santa Fe Prairie Nature Preserve.

METHODS

A grid system ^{has been} ~~will be~~ set up throughout Santa Fe Prairie Nature Preserve. This grid will be used to collect information on the vascular plants, mosses, lichens, and any other items that may add information to or be influenced by management of the site. From the data collected, a color map will be generated using the Auto-Cad drafting program. Items on the map will include ponds, ant hills, paths, ditches, berms, streets, reed canary grass, hazel nut shrubs, etc.

We also have a permit from the Illinois Nature Preserves Commission that gives us permission to make small collections of any vascular plants, mosses, or lichens that can't be identified in the field. No threatened or endangered plants are to be collected, but any others may be deposited in the herbarium at the Morton Arboretum, Lisle, IL, after they have been identified. The permit also allows us to set up a grid system.

The prairie will be divided into a 10 meter x 10 meter grid system. Since the overall boundaries of the site are approximately 200 meters x 200 meters, we could have as many as 400 plots. Species cover would be sampled in 1 square meter plots centered over each grid intercept point.

A total of 99 *different items* have been sampled so far. These mainly include vascular plants, but mosses, lichens, open water, and resprouts of dogwood and buckthorn are also included (SEE COLUMN "A").

Plant names are written as a six letter acronym in column "A". The first 3 letters are the first 3 letters of the genus followed by the first 3 letters of the species. This method is used at the Morton Arboretum. An example of a typical plant follows:

ACHMIL = ACHillea MILlefolium, to represent *Achillea millefolium*, or YARROW.

In rows going across the pages, I show what *percentage* a particular item covers in each plot. The chart is read as follows:

For a plot: 1-1, it means LINE 1, PLOT 1; 1-5 means LINE 1, PLOT 5; 1-10 means LINE 1, PLOT 10, and so on.

If you have any questions, feel free to contact me.

Sincerely,

A handwritten signature in cursive script that reads "Rich Hyerczyk".

Rich Hyerczyk
5204 S. Natoma Av.
Chicago, IL 60638-1222
H (773) 586-8508
W(773) 242-1923
FAX (708) 354-1385

P.S.

A complete list of all acronyms has been published in the latest edition of *Erigenia*, the Journal of the Illinois Native Plant Society (Number 15, November 1997).

Santa Fe Prairie Study

December 1997

Rich Hyerczyk

This is an example sheet.

	A	B	C	D	E	F	G	H	I	J	K	L
1		Plot	1-1	1-2	1-3	1-4	1-5	1-6	1-7	1-8	1-9	1-10
2	Species											
3	ACHMIL		0	0	0	0	0	0	0	0	0	0
4	AGRALB		0	0	0	0	0	0	0	0	0	0
5	AGRSP		0	0	0	0	0	0	0	0	0	0
6	ALLCAN		0	0	0	0	0	0	1	0	0	0
7	ALLCER		4	10	0	1	0	0	5	0	0	0
8	ANDGER		0	0	0	0	0	0	0	0	0	0
9	ANDSCO		0	0	0	0	0	0	0	0	0	0
10	ASCSYR		0	0	0	0	0	0	0	0	0	0
11	ASTERI		0	0	0	0	0	0	0	0	2	0
12	CALCAN		0	0	0	0	0	0	0	0	0	0
13	CARPEN		0	0	0	0	0	0	0	0	25	0
14	CARSPP		39	100	9	28	0	0	0	49	90	0
15	CIRDIS		0	0	0	0	0	0	0	1	0	0
16	CIRSPP		0	0	0	0	0	0	0	0	0	0
17	COMRIC		0	0	0	0	0	0	0	0	0	0
18	CONVOL		0	0	0	0	0	0	0	0	0	0
19	CORPAL		0	0	0	0	0	0	0	0	0	0
20	CORRAC		0	4	0	32	9	16	15	34	0	0
21	stumps		0	3	0	13	6	6	9	13	0	0
22	resprouts		0	10	0	28	28	12	21	35	0	0
23	CORSTO		0	0	0	0	25	0	0	0	0	0
24	stumps		0	0	0	0	5	0	0	0	0	0
25	resprouts		0	0	0	0	12	0	0	0	0	0
26	CORTRI		0	1	0	0	0	0	0	0	0	0
27	DIPSYL		0	0	0	0	0	0	0	0	0	0
28	ERYUC		0	0	0	0	0	0	0	0	0	0
29	EUPALT		0	0	0	0	0	0	0	0	0	0
30	FRAPES		0	0	0	0	0	1	0	0	0	0
31	stumps		0	0	0	0	0	0	0	0	0	0
32	resprout		0	0	0	0	0	0	0	0	0	0
33	FRAVIR		0	9	3	5	0	0	0	0	1	0

EXAMPLE:

Item # 33 is FRAgaria VIRginiana (STRAWBERRY)
Fragaria virginiana

IN PLOT 1-2 (LINE 1, PLOT 2)

9% of the meter² is covered by FRAVIR.

Santa Fe Prairie Study

December 1997

Rich Hyerczyk

	A	B	C	D	E	F	G	H	I	J	K
1		Plot	1-1	1-2	1-3	1-4	1-5	1-6	1-7	1-8	1-9
2	Species										
3	ACHMIL		0	0	0	0	0	0	0	0	0
4	AGRALB		0	0	0	0	0	0	0	0	0
5	AGRSPP		0	0	0	0	0	0	0	0	0
6	ALLCAN		0	0	0	0	0	0	1	0	0
7	ALLCER		4	10	0	1	0	0	5	0	0
8	ANDGER		0	0	0	0	0	0	0	0	0
9	ANDSCO		0	0	0	0	0	0	0	0	0
10	ASTERI		0	0	0	0	0	0	0	0	2
11	CALCAN		0	0	0	0	0	0	0	0	0
12	CARSPP		39	100	9	28	0	0	0	49	90
13	CARPEN		0	0	0	0	0	0	0	0	25
14	CIRDIS		0	0	0	0	0	0	0	1	0
15	CIRSPP		0	0	0	0	0	0	0	0	0
16	COMRIC		0	0	0	0	0	0	0	0	0
17	CONSEP		0	0	0	0	0	0	0	0	0
18	CORPAL		0	0	0	0	0	0	0	0	0
19	CORRAC		0	4	0	32	9	16	15	34	0
20	stumps		0	3	0	13	6	6	9	13	0
21	resprouts		0	10	0	28	28	12	21	35	0
22	CORSTO		0	0	0	0	25	0	0	0	0
23	stumps		0	0	0	0	5	0	0	0	0
24	resprouts		0	0	0	0	12	0	0	0	0
25	CORTRI		0	1	0	0	0	0	0	0	0
26	DIPSYL		0	0	0	0	0	0	0	0	0
27	ERYYUC		0	0	0	0	0	0	0	0	0
28	EUPALT		0	0	0	0	0	0	0	0	0
29	FRAPES		0	0	0	0	0	1	0	0	0
30	stumps		0	0	0	0	0	0	0	0	0
31	resprout		0	0	0	0	0	0	0	0	0
32	FRAVIR		0	9	3	5	0	0	0	0	1
33	GALSPP		0	0	0	0	0	0	0	0	0
34	GAUBIE		0	0	0	0	0	0	0	0	0
35	GEUSPP		0	0	0	0	0	0	0	0	0
36	HEDPUL		0	0	0	0	0	0	0	0	0
37	HELGRO		0	0	0	0	0	0	0	0	8
38	HELISP		0	0	0	0	0	0	0	0	0
39	IRIVIR		0	0	0	0	0	0	0	0	0
40	JUNTEN		0	0	0	0	0	0	0	0	0
41	LITCAN		0	0	0	0	0	0	0	0	0
42	LYCAME		0	0	0	0	0	0	0	0	0
43	LYSNUM		0	0	0	0	0	0	0	0	0
44	MONFIS		0	0	0	0	0	0	0	1	0
45	MYRISP		0	0	0	0	0	0	0	0	0
46	OENBIE		0	2	0	2	0	0	0	0	0
47	PANCAP		0	0	0	0	0	0	0	0	0
48	PANIMP		0	1	0	0	0	0	0	0	0
49	PANVIR		0	0	0	0	0	0	0	0	0
50	PENDIG		0	0	0	0	0	0	0	0	0

Santa Fe Prairie Study

December 1997

Rich Hyerczyk

	A	B	C	D	E	F	G	H	I	J	K
1		Plot	1-1	1-2	1-3	1-4	1-5	1-6	1-7	1-8	1-9
51	PHAARU		0	0	0	0	1	100	0	0	0
52	POAPRA		0	0	0	0	0	0	0	0	0
53	POLCOC		0	0	0	0	0	0	0	0	0
54	POPDEL		0	0	0	0	0	0	0	0	0
55	POTSIM		0	0	0	0	0	0	0	0	0
56	PRUVUL		0	0	0	0	0	0	0	0	0
57	PYCVIR		0	0	0	1	0	0	0	0	2
58	RANFLA		0	0	0	0	0	0	0	0	0
59	RATPIN		0	0	0	0	0	0	0	0	0
60	RHACAR		0	4	65	64	27	0	66	0	0
61	stumps		0	1	5	5	2	0	8	0	0
62	resprouts		0	5	46	68	6	0	57	0	0
63	RHAFRA		0	0	0	0	0	0	0	0	0
64	stumps		0	0	0	0	0	0	0	0	0
65	resprouts		0	0	0	0	0	0	0	0	0
66	ROSCAR		14	36	0	3	2	2	0	5	0
67	RUBOCC		0	0	0	0	0	0	0	0	0
68	RUDHIR		0	0	0	0	0	0	0	0	0
69	SALSPP		0	0	0	0	0	0	0	0	27
70	stumps		0	0	0	0	0	0	0	0	1
71	resprouts		0	0	0	0	0	0	0	0	1
72	SCUPAR		0	0	0	0	0	0	0	0	0
73	SILINT		18	0	0	0	0	0	0	8	0
74	SILLAC		0	0	0	0	0	0	0	0	0
75	SILTER		0	0	0	0	0	0	0	0	0
76	SMISTE		0	0	0	0	0	4	0	0	4
77	SOLALT		0	0	0	0	4	0	0	0	0
78	SOLGRN		0	0	0	0	0	0	0	0	0
79	SOLJUN		0	0	0	0	0	0	0	0	0
80	SOLRIG		0	0	0	0	0	0	0	0	0
81	SOLSPP		0	0	0	0	0	0	0	0	0
82	SOLJUN		0	0	0	0	0	0	0	0	0
83	SPAPEC		0	0	0	0	60	0	0	0	0
84	SPOHET		0	0	0	0	0	0	0	0	0
85	STACSP		0	0	0	0	0	0	0	0	0
86	THADAS		0	0	0	0	0	0	0	0	0
87	VIOLSP		0	0	0	0	1	0	0	0	0
88	VITRIP		0	0	0	0	0	0	0	0	0
89	SHELLS		0	0	0	1	0	0	0	1	0
90	FISTAX		0	0	0	0	16	0	0	0	0
91	MOSS#2		0	0	0	0	0	0	0	0	0
92	MOSS#3		0	0	0	0	0	0	0	0	0
93	BACGRA		0	0	0	0	0	0	0	0	0
94	ENDPUS		0	0	0	1	0	0	0	0	0
95	VERCAL		0	0	0	0	0	0	0	0	0
96	YMUSH		0	0	0	0	0	0	0	0	0
97	FLAVEL		0	0	0	0	0	0	0	0	0
98	WATER		0	0	0	0	0	0	0	0	0
99	FILL		0	0	0	0	0	0	0	0	0

Santa Fe Prairie Study

December 1997

Rich Hyerczyk

	A	L	M	N	O	P	Q	R	S	T	U
1		1-10	2-1	2-2	2-3	2-4	2-5	2-6	2-7	2-8	2-9
2	Species										
3	ACHMIL	0	0	0	0	0	0	0	0	0	0
4	AGRALB	0	0	0	0	0	0	0	0	0	0
5	AGRSP	0	0	0	0	0	0	0	0	0	0
6	ALLCAN	0	0	0	0	0	0	0	0	0	0
7	ALLCER	0	1	0	0	0	0	0	0	0	0
8	ANDGER	0	0	0	0	0	0	0	0	0	0
9	ANDSCO	0	0	0	0	0	0	0	0	0	0
10	ASTERI	0	0	0	0	0	0	0	0	0	0
11	CALCAN	0	0	0	0	0	0	0	0	0	0
12	CARSPP	0	64	80	85	100	100	20	75	0	90
13	CARPEN	0	0	0	0	0	0	0	0	0	0
14	CIRDIS	0	0	0	0	8	0	0	0	0	0
15	CIRSP	0	1	0	0	0	0	0	0	0	0
16	COMRIC	0	0	0	0	0	0	0	0	0	0
17	CONSEP	0	0	0	0	0	0	0	0	0	0
18	CORPAL	0	0	0	0	8	0	0	0	0	0
19	CORRAC	0	0	0	0	0	6	23	7	0	0
20	stumps	0	0	0	0	0	1	9	1	0	0
21	resprouts	0	0	0	0	0	1	11	4	0	0
22	CORSTO	0	0	0	0	0	0	0	0	26	0
23	stumps	0	0	0	0	0	0	0	0	11	0
24	resprouts	0	0	0	0	0	0	0	0	26	0
25	CORTRI	0	3	0	2	0	1	0	0	0	0
26	DIPSYL	0	0	0	0	0	0	0	0	0	0
27	ERYYUC	0	0	0	0	0	0	0	0	0	0
28	EUPALT	0	0	0	0	0	0	0	0	0	0
29	FRAPES	0	0	0	0	0	0	0	0	0	0
30	stumps	0	0	0	0	0	0	0	0	0	0
31	resprout	0	0	0	0	0	0	0	0	0	0
32	FRAVIR	0	6	3	31	9	0	0	1	0	0
33	GALSPP	0	0	0	0	0	0	0	0	0	0
34	GAUBIE	0	0	0	3	0	0	0	0	0	0
35	GEUSPP	0	0	0	0	0	0	0	0	0	0
36	HEDPUL	0	0	0	0	1	0	0	0	0	0
37	HELGR	0	0	0	0	0	0	0	1	0	3
38	HELISP	0	0	0	0	0	0	0	0	0	0
39	IRIVIR	0	0	0	0	0	0	0	0	0	0
40	JUNTEN	0	0	0	0	0	0	0	0	0	0
41	LITCAN	0	4	0	0	0	0	0	0	0	0
42	LYCAME	0	0	0	0	0	0	0	0	0	0
43	LYSNUM	0	0	0	0	0	0	0	0	0	0
44	MONFIS	0	0	2	12	9	8	0	8	0	1
45	MYRISP	0	0	0	0	0	0	0	0	0	0
46	OENBIE	0	0	3	8	2	0	0	0	0	0
47	PANCAP	0	0	0	0	0	0	0	0	0	0
48	PANIMP	0	1	7	1	0	0	0	0	0	0
49	PANVIR	0	0	0	0	0	0	0	0	0	0
50	PENDIG	0	0	0	0	0	0	0	0	0	0

Santa Fe Prairie Study

December 1997

Rich Hyerczyk

	A	V	W	X	Y	Z	AA	AB	AC	AD	AE
1		2-10	2-11	2-12	2-13	2-14	2-15	2-16	2-17	2-18	2-19
2	Species										
3	ACHMIL	0	0	0	0	0	0	0	0	0	0
4	AGRALB	0	0	0	0	0	0	0	0	0	0
5	AGRSPP	0	0	0	0	0	0	0	0	0	0
6	ALLCAN	0	0	0	0	0	0	0	0	0	0
7	ALLCER	1	0	0	0	0	0	0	0	0	0
8	ANDGER	0	0	0	0	0	0	0	0	0	0
9	ANDSCO	0	0	0	0	0	0	0	0	0	0
10	ASTERI	0	0	0	0	0	0	0	0	0	0
11	CALCAN	0	0	39	0	0	0	0	0	0	0
12	CARSPP	60	0	0	30	3	0	0	0	0	0
13	CARPEN	0	0	0	0	0	0	0	0	0	0
14	CIRDIS	0	0	0	1	0	1	0	0	0	0
15	CIRSPP	0	0	0	0	0	0	0	0	0	0
16	COMRIC	0	0	0	0	0	0	0	0	0	0
17	CONSEP	0	0	0	0	0	0	0	0	0	0
18	CORPAL	0	0	0	0	0	0	0	0	0	0
19	CORRAC	0	0	20	0	0	0	0	0	0	0
20	stumps	0	0	1	0	0	0	0	0	0	0
21	resprouts	0	0	2	0	0	0	0	0	0	0
22	CORSTO	0	0	0	19	0	14	0	0	0	0
23	stumps	0	0	0	4	0	1	0	0	0	0
24	resprouts	0	0	0	9	0	2	0	0	0	0
25	CORTRI	0	0	0	0	0	0	0	0	0	0
26	DIPSYL	0	0	0	0	0	0	0	0	0	0
27	ERYYUC	0	0	0	0	0	0	0	0	0	0
28	EUPALT	0	0	0	0	0	0	0	0	0	0
29	FRAPES	0	0	0	0	0	0	0	0	0	0
30	stumps	0	0	0	0	0	0	0	0	0	0
31	resprout	0	0	0	0	0	0	0	0	0	0
32	FRAVIR	0	0	0	5	1	1	0	0	0	0
33	GALSPP	0	0	0	0	0	0	0	0	0	0
34	GAUBIE	0	0	2	0	10	0	0	0	0	0
35	GEUSPP	0	0	0	0	0	1	0	0	0	0
36	HEDPUL	0	0	0	0	0	0	0	0	0	0
37	HELGRO	0	0	0	0	0	0	0	0	0	0
38	HELISP	0	0	0	0	0	0	0	0	0	0
39	IRIVIR	0	0	0	0	0	0	0	0	0	0
40	JUNTEN	0	0	0	0	0	0	0	0	0	0
41	LITCAN	0	0	0	0	0	0	0	0	0	0
42	LYCAME	0	0	0	0	0	0	0	0	0	0
43	LYSNUM	0	0	0	0	0	0	0	0	0	0
44	MONFIS	0	0	0	0	1	0	0	0	0	0
45	MYRISP	0	0	0	0	0	0	0	0	50	0
46	OENBIE	0	0	0	0	4	16	0	0	0	0
47	PANCAP	0	0	0	0	0	0	0	0	0	0
48	PANIMP	0	0	0	0	1	0	0	0	0	0
49	PANVIR	0	0	0	0	0	0	0	0	0	0
50	PENDIG	0	0	0	0	0	0	0	0	0	0

Santa Fe Prairie Study

December 1997

Rich Hyerczyk

	A	V	W	X	Y	Z	AA	AB	AC	AD	AE
1		2-10	2-11	2-12	2-13	2-14	2-15	2-16	2-17	2-18	2-19
51	PHAARU	0	8	0	0	0	0	100	95	0	0
52	POAPRA	0	0	0	0	0	0	0	0	0	0
53	POLCOC	0	0	0	0	0	0	0	0	0	0
54	POPDEL	0	0	0	0	0	0	0	0	0	0
55	POTSIM	0	0	0	0	0	0	0	0	0	0
56	PRUVUL	0	0	0	0	0	0	0	0	0	0
57	PYCVIR	6	0	0	1	0	0	0	0	0	0
58	RANFLA	0	0	0	0	0	0	0	0	0	0
59	RATPIN	0	0	0	0	0	0	0	0	0	0
60	RHACAR	0	15	0	0	0	0	0	0	0	0
61	stumps	0	2	0	0	0	0	0	0	0	0
62	resprouts	0	9	0	0	0	0	0	0	0	0
63	RHAFRA	0	20	0	0	0	0	0	0	0	0
64	stumps	0	2	0	0	0	0	0	0	0	0
65	resprouts	0	19	0	0	0	0	0	0	0	0
66	ROSCAR	5	0	0	6	5	1	0	0	0	0
67	RUBOCC	0	0	0	0	0	0	0	0	0	0
68	RUDHIR	0	0	0	0	0	0	0	0	0	0
69	SALSPP	0	0	0	0	0	0	0	0	0	0
70	stumps	0	0	0	0	0	0	0	0	0	0
71	resprouts	0	0	0	0	0	0	0	0	0	0
72	SCUPAR	0	0	0	0	0	0	0	0	0	0
73	SILINT	0	0	0	0	0	0	0	0	0	0
74	SILLAC	0	0	0	0	0	0	0	0	0	0
75	SILTER	0	0	0	0	0	0	0	0	0	0
76	SMISTE	3	0	0	6	0	3	0	0	0	0
77	SOLALT	0	4	1	2	23	0	0	0	0	0
78	SOLGRN	0	0	0	0	0	0	0	0	0	0
79	SOLJUN	0	0	0	0	0	0	0	0	0	0
80	SOLRIG	0	0	0	0	0	0	0	0	0	0
81	SOLSPP	0	0	0	0	0	0	0	0	0	0
82	SOLJUN	0	0	0	0	0	0	0	0	0	0
83	SPAPEC	25	0	0	7	0	0	0	0	0	0
84	SPOHET	0	0	0	0	0	0	0	0	0	0
85	STACSP	0	0	0	0	0	0	0	0	0	0
86	THADAS	0	0	0	0	0	0	0	0	0	0
87	VIOLSP	0	0	0	0	0	0	0	0	0	0
88	VITRIP	0	16	0	0	0	0	0	0	0	0
89	SHELLS	0	0	1	0	0	0	1	0	0	0
90	FISTAX	0	0	0	0	0	0	0	0	0	0
91	MOSS#2	0	0	0	0	0	0	0	0	0	0
92	MOSS#3	0	0	0	0	0	0	0	0	0	0
93	BACGRA	0	0	0	0	0	0	0	0	0	0
94	ENDPUS	0	0	0	0	0	0	0	0	0	0
95	VERCAL	0	2	1	1	0	0	0	0	0	0
96	YMUSH	0	0	0	0	0	0	0	0	0	0
97	FLAVEL	0	0	0	0	0	0	0	0	0	0
98	WATER	0	0	0	0	0	0	0	0	100	0
99	FILL	0	0	0	0	0	0	0	0	0	0

Santa Fe Prairie Study

December 1997

Rich Hyerczyk

	A	AF	AG	AH	AI	AJ	AK	AL	AM	AN	AO
1		3-1	3-2	3-3	3-4	3-5	3-6	3-7	3-8	3-9	3-10
2	Species										
3	ACHMIL	0	0	0	0	0	0	0	0	0	0
4	AGRALB	0	0	0	0	0	0	0	0	0	0
5	AGRSPP	0	0	0	0	0	0	0	0	0	0
6	ALLCAN	0	0	0	0	0	0	0	0	0	0
7	ALLCER	0	0	0	0	0	0	0	0	0	0
8	ANDGER	0	0	0	0	0	0	0	0	0	0
9	ANDSCO	0	0	0	0	0	0	0	0	0	0
10	ASTERI	0	0	0	1	0	0	0	0	0	0
11	CALCAN	0	0	0	0	0	0	0	0	0	0
12	CARSPP	3	81	100	94	1	16	10	87	100	70
13	CARPEN	0	0	0	0	0	0	0	0	0	0
14	CIRDIS	0	0	0	1	0	0	0	0	0	0
15	CIRSPP	0	0	0	0	0	0	0	0	0	0
16	COMRIC	0	5	0	0	0	0	0	0	0	0
17	CONSEP	0	0	0	0	0	0	0	0	0	0
18	CORPAL	0	0	0	0	0	0	0	0	0	0
19	CORRAC	3	0	8	0	3	8	15	3	0	0
20	stumps	8	0	3	0	1	7	8	1	0	0
21	resprouts	13	0	6	0	1	13	14	5	0	0
22	CORSTO	0	0	0	0	0	0	0	0	0	0
23	stumps	0	0	0	0	0	0	0	0	0	0
24	resprouts	0	0	0	0	0	0	0	0	0	0
25	CORTRI	0	0	1	4	0	0	0	0	0	0
26	DIPSYL	0	0	0	0	0	0	0	0	0	0
27	ERYYUC	0	0	0	0	0	0	0	0	0	0
28	EUPALT	0	0	0	0	0	0	0	0	0	0
29	FRAPES	0	0	0	0	0	0	0	0	0	0
30	stumps	0	0	0	0	0	0	0	0	0	0
31	resprout	0	0	0	0	0	0	0	0	0	0
32	FRAVIR	1	36	4	18	0	8	0	13	18	24
33	GALSPP	0	0	0	0	0	0	0	0	0	0
34	GAUBIE	0	0	0	0	0	0	0	0	0	0
35	GEUSPP	0	0	0	0	0	0	0	0	0	0
36	HEDPUL	0	0	1	0	0	0	0	0	0	0
37	HELGRO	0	0	0	3	0	0	0	0	0	0
38	HELISP	0	0	0	0	0	0	0	0	0	1
39	IRIVIR	0	0	0	0	0	0	0	0	0	0
40	JUNTEN	0	0	0	0	0	0	0	0	0	0
41	LITCAN	0	0	0	0	0	0	0	0	0	0
42	LYCAME	0	0	0	0	0	0	0	0	0	0
43	LYSNUM	0	0	0	0	0	0	0	0	0	0
44	MONFIS	0	22	0	10	0	6	11	10	0	1
45	MYRISP	0	0	0	0	0	0	0	0	0	0
46	OENBIE	0	4	1	3	0	0	0	2	7	0
47	PANCAP	0	0	0	0	0	0	0	0	0	0
48	PANIMP	0	0	0	2	0	0	0	0	0	0
49	PANVIR	0	0	6	0	0	0	0	0	0	0
50	PENDIG	0	0	0	0	0	0	0	0	0	0

Santa Fe Prairie Study

December 1997

Rich Hyerczyk

	A	AF	AG	AH	AI	AJ	AK	AL	AM	AN	AO
1		3-1	3-2	3-3	3-4	3-5	3-6	3-7	3-8	3-9	3-10
51	PHAARU	0	0	0	0	0	0	0	0	0	0
52	POAPRA	0	0	0	0	0	0	0	0	0	0
53	POLCOC	0	0	0	0	0	0	0	0	0	0
54	POPDEL	0	0	0	0	0	0	0	0	0	0
55	POTSIM	0	0	0	3	0	0	0	0	0	0
56	PRUVUL	0	2	2	0	0	0	0	0	0	0
57	PYCVIR	0	1	1	0	0	0	0	1	0	0
58	RANFLA	0	0	0	0	0	0	0	0	0	0
59	RATPIN	0	0	0	0	0	1	0	0	0	0
60	RHACAR	0	25	0	0	0	0	0	0	3	7
61	stumps	0	5	0	0	0	0	0	0	1	1
62	resprouts	0	28	0	0	0	0	0	0	2	10
63	RHAFRA	0	0	0	0	0	0	0	0	0	0
64	stumps	0	0	0	0	0	0	0	0	0	0
65	resprouts	0	0	0	0	0	0	0	0	0	0
66	ROSCAR	5	13	1	21	1	2	1	0	0	1
67	RUBOCC	0	0	0	0	38	0	0	0	0	0
68	RUDHIR	0	1	0	0	0	0	0	0	0	0
69	SALSPP	0	0	0	0	0	0	0	0	0	0
70	stumps	0	0	0	0	0	0	0	0	0	0
71	resprouts	0	0	0	0	0	0	0	0	0	0
72	SCUPAR	0	0	0	0	0	0	0	0	0	0
73	SILINT	29	0	0	0	0	0	0	0	8	0
74	SILLAC	0	2	0	0	0	0	0	0	0	0
75	SILTER	0	2	0	1	0	0	0	0	0	0
76	SMISTE	0	0	8	1	0	19	4	0	4	0
77	SOLALT	0	0	0	0	0	0	0	0	0	0
78	SOLGRN	0	0	0	0	0	0	0	0	0	0
79	SOLJUN	0	0	0	0	0	0	0	0	0	0
80	SOLRIG	0	0	0	0	0	0	0	0	0	0
81	SOLSPP	0	0	0	0	5	0	0	0	0	0
82	SOLJUN	0	0	10	1	0	0	0	1	0	0
83	SPAPEC	0	0	0	0	0	0	0	0	0	0
84	SPOHET	0	0	0	0	0	0	0	0	0	25
85	STACSP	0	0	0	0	0	0	0	0	0	0
86	THADAS	0	0	0	0	0	0	0	0	0	0
87	VIOLSP	0	0	0	0	0	0	0	0	0	0
88	VITRIP	0	0	0	0	38	0	0	0	0	0
89	SHELLS	0	0	0	0	0	0	1	0	0	0
90	FISTAX	0	0	5	0	0	0	0	0	0	0
91	MOSS#2	0	0	0	0	0	0	0	1	0	0
92	MOSS#3	0	0	0	0	0	0	0	0	0	0
93	BACGRA	0	0	0	0	1	0	0	0	0	0
94	ENDPUS	0	0	0	0	0	0	0	0	0	0
95	VERCAL	0	0	0	0	0	0	0	0	0	0
96	YMUSH	0	0	0	0	0	0	0	0	0	0
97	FLAVEL	0	0	0	0	0	0	0	0	0	0
98	WATER	0	0	0	0	0	0	0	0	0	0
99	FILL	0	0	0	0	0	0	0	0	0	0

Santa Fe Prairie Study

December 1997

Rich Hyerczyk

	A	AP	AQ	AR	AS	AT	AU	AV	AW	AX	AY
1		3-11	3-12	3-13	3-14	3-15	3-16	3-17	3-18	4-1	4-2
2	Species										
3	ACHMIL	0	0	0	0	0	0	0	0	0	0
4	AGRALB	0	0	0	0	0	0	0	0	0	0
5	AGRSPP	0	0	0	0	0	0	0	0	0	0
6	ALLCAN	0	0	0	0	0	0	0	0	0	0
7	ALLCER	0	0	0	0	0	0	0	0	0	0
8	ANDGER	0	0	0	0	0	0	0	0	0	0
9	ANDSCO	0	0	0	0	0	0	0	0	0	0
10	ASTERI	0	0	0	0	0	0	0	0	0	0
11	CALCAN	90	75	0	0	0	0	0	0	0	0
12	CARSPP	0	0	0	90	95	0	0	0	100	100
13	CARPEN	0	0	0	0	0	0	0	0	0	0
14	CIRDIS	1	0	0	0	0	0	0	0	0	0
15	CIRSPP	0	0	0	0	0	0	0	0	0	0
16	COMRIC	0	0	0	0	0	0	0	0	0	0
17	CONSEP	0	0	0	0	0	0	0	0	0	0
18	CORPAL	0	0	0	0	0	0	0	0	0	0
19	CORRAC	0	0	0	0	0	0	0	0	5	14
20	stumps	0	0	0	0	0	0	0	0	1	6
21	resprouts	0	0	0	0	0	0	0	0	5	20
22	CORSTO	0	50	10	0	0	90	0	0	0	0
23	stumps	0	2	2	0	0	1	0	0	0	0
24	resprouts	0	10	5	0	0	9	0	0	0	0
25	CORTRI	0	0	0	0	0	0	0	0	0	1
26	DIPSYL	0	0	0	0	0	0	0	0	0	0
27	ERYYUC	0	0	0	0	0	0	0	0	0	0
28	EUPALT	0	0	0	0	0	0	0	0	0	0
29	FRAPES	0	1	0	0	0	0	0	0	0	0
30	stumps	0	1	0	0	0	0	0	0	0	0
31	resprout	0	1	0	0	0	0	0	0	0	0
32	FRAVIR	0	0	1	0	0	0	0	0	19	0
33	GALSPP	0	0	0	0	0	0	0	0	0	0
34	GAUBIE	0	0	0	0	0	0	0	0	0	0
35	GEUSPP	0	0	0	0	0	0	0	0	1	0
36	HEDPUL	0	0	0	6	0	0	0	0	0	0
37	HELGRO	0	0	0	10	2	0	0	0	1	4
38	HELISP	0	0	0	0	0	0	0	0	0	0
39	IRIVIR	0	0	0	0	0	0	0	0	0	0
40	JUNTEN	0	0	0	0	0	0	0	0	0	0
41	LITCAN	0	0	0	0	0	0	0	0	0	0
42	LYCAME	0	0	0	0	0	0	0	0	0	0
43	LYSNUM	0	3	0	0	0	0	0	0	0	0
44	MONFIS	0	0	4	0	0	0	0	0	0	15
45	MYRISP	0	0	0	0	0	0	50	50	0	0
46	OENBIE	0	1	0	1	0	0	0	0	2	8
47	PANCAP	0	0	0	0	0	0	0	0	0	0
48	PANIMP	0	0	0	8	0	0	0	0	0	0
49	PANVIR	0	0	0	0	0	0	0	0	0	0
50	PENDIG	0	0	0	0	0	0	0	0	0	0

Santa Fe Prairie Study

December 1997

Rich Hyerczyk

	A	AP	AQ	AR	AS	AT	AU	AV	AW	AX	AY
1		3-11	3-12	3-13	3-14	3-15	3-16	3-17	3-18	4-1	4-2
51	PHAARU	0	0	0	0	0	90	0	0	0	0
52	POAPRA	0	0	0	0	0	0	0	0	0	0
53	POLCOC	0	0	0	0	0	0	50	50	0	0
54	POPDEL	0	0	0	0	0	0	0	0	0	0
55	POTSIM	0	0	0	0	0	0	0	0	0	0
56	PRUVUL	0	0	0	0	0	0	0	0	0	0
57	PYCVIR	0	0	0	0	2	0	0	0	0	0
58	RANFLA	0	0	0	0	0	0	0	0	0	0
59	RATPIN	0	0	0	0	0	0	0	0	0	0
60	RHACAR	10	25	10	2	0	0	0	0	5	12
61	stumps	1	1	2	1	0	0	0	0	1	1
62	resprouts	7	1	5	6	0	0	0	0	3	5
63	RHAFRA	0	0	0	0	0	0	0	0	0	0
64	stumps	0	0	0	0	0	0	0	0	0	0
65	resprouts	0	0	0	0	0	0	0	0	0	0
66	ROSCAR	0	0	8	0	9	0	0	0	14	9
67	RUBOCC	0	0	0	0	0	0	0	0	0	0
68	RUDHIR	0	0	0	0	0	0	0	0	0	2
69	SALSPP	0	0	0	0	0	0	0	0	0	0
70	stumps	0	0	0	0	0	0	0	0	0	0
71	resprouts	0	0	0	0	0	0	0	0	0	0
72	SCUPAR	0	0	0	0	0	0	0	0	0	0
73	SILINT	0	0	0	0	0	0	0	0	0	0
74	SILLAC	0	0	0	0	0	0	0	0	0	0
75	SILTER	0	0	0	0	0	0	0	0	0	6
76	SMISTE	3	0	3	0	0	0	0	0	0	0
77	SOLALT	0	0	8	0	8	0	0	0	0	0
78	SOLGRN	0	0	0	0	1	0	0	0	0	0
79	SOLJUN	0	0	0	0	0	0	0	0	0	0
80	SOLRIG	0	0	0	0	0	0	0	0	0	0
81	SOLSPP	0	0	0	0	0	0	0	0	0	0
82	SOLJUN	0	0	0	0	0	0	0	0	0	0
83	SPAPEC	0	0	0	0	0	0	0	0	0	0
84	SPOHET	0	0	4	0	0	0	0	0	0	0
85	STACSP	0	0	0	0	0	0	0	0	0	0
86	THADAS	0	0	0	0	0	0	0	0	0	0
87	VIOLSP	0	0	0	0	0	0	0	0	0	0
88	VITRIP	15	3	0	0	0	0	0	0	0	0
89	SHELLS	1	0	0	0	0	1	0	0	0	0
90	FISTAX	0	0	0	0	0	0	0	0	0	0
91	MOSS#2	0	0	0	0	0	0	0	0	0	0
92	MOSS#3	0	0	0	0	0	0	0	0	0	0
93	BACGRA	0	0	0	0	0	0	0	0	0	0
94	ENDPUS	0	0	0	0	0	0	0	0	0	0
95	VERCAL	0	0	0	1	0	0	0	0	0	0
96	YMUSH	0	0	0	0	0	0	0	0	0	0
97	FLAVEL	0	0	0	0	0	0	0	0	0	0
98	WATER	0	0	0	0	0	0	100	100	0	0
99	FILL	0	0	0	0	0	0	0	0	0	0

Santa Fe Prairie Study

December 1997

Rich Hyerczyk

	A	AZ	BA	BB	BC	BD	BE	BF	BG	BH	BI
1		4-3	4-4	4-5	4-6	4-7	4-8	4-9	4-10	4-11	4-12
2	Species										
3	ACHMIL	0	0	0	0	0	0	0	0	0	0
4	AGRALB	0	0	10	0	0	0	0	0	0	0
5	AGRSPP	0	0	0	0	0	0	0	0	0	0
6	ALLCAN	0	0	0	0	0	0	0	0	0	0
7	ALLCER	0	0	0	0	0	0	0	0	0	0
8	ANDGER	0	0	0	0	0	0	0	0	0	0
9	ANDSCO	0	0	0	0	0	0	0	0	0	0
10	ASTERI	0	0	0	0	0	0	0	0	0	0
11	CALCAN	0	0	0	0	80	0	0	0	95	0
12	CARSPP	100	31	15	0	0	90	85	0	0	0
13	CARPEN	0	0	0	1	0	1	0	0	0	0
14	CIRDIS	0	0	0	0	0	0	0	0	0	0
15	CIRSPP	0	0	0	0	0	0	0	0	0	0
16	COMRIC	0	0	0	0	0	0	0	0	0	0
17	CONSEP	0	0	0	0	0	0	0	0	0	0
18	CORPAL	0	0	0	0	0	0	0	0	0	0
19	CORRAC	0	0	0	13	14	0	3	0	8	0
20	stumps	0	0	0	2	5	0	2	0	1	0
21	resprouts	0	0	0	5	12	0	6	0	1	0
22	CORSTO	0	0	0	0	0	0	0	0	3	0
23	stumps	0	0	0	0	0	0	0	0	1	0
24	resprouts	0	0	0	0	0	0	0	0	1	0
25	CORTRI	0	0	0	0	0	2	0	0	0	0
26	DIPSYL	0	0	0	0	0	0	0	0	0	0
27	ERYYUC	0	0	0	0	0	0	0	4	0	0
28	EUPALT	0	0	0	0	0	0	0	0	0	0
29	FRAPES	0	0	0	0	0	0	0	0	0	0
30	stumps	0	0	0	0	0	0	0	0	0	0
31	resprout	0	0	0	0	0	0	0	0	0	0
32	FRAVIR	5	9	57	0	3	3	22	10	0	0
33	GALSPP	0	0	0	0	0	0	0	0	0	0
34	GAUBIE	0	0	0	0	0	0	0	0	0	0
35	GEUSPP	0	0	0	0	0	0	0	0	0	0
36	HEDPUL	2	0	0	0	0	0	1	0	0	0
37	HELGRO	2	2	0	0	0	0	0	0	0	0
38	HELISP	0	0	0	0	0	0	0	0	0	0
39	IRIVIR	0	0	0	0	0	0	0	0	0	0
40	JUNTEN	0	0	0	0	0	0	0	0	0	0
41	LITCAN	0	0	0	0	0	0	0	0	0	0
42	LYCAME	0	0	0	0	0	0	0	0	0	0
43	LYSNUM	0	0	0	0	0	0	0	0	0	0
44	MONFIS	0	4	1	0	1	10	0	4	2	0
45	MYRISP	0	0	0	0	0	0	0	0	0	0
46	OENBIE	0	13	5	0	0	0	1	2	0	0
47	PANCAP	0	0	0	0	0	0	0	0	0	0
48	PANIMP	0	3	0	0	0	0	0	0	0	0
49	PANVIR	0	0	0	0	0	0	0	0	0	0
50	PENDIG	0	0	0	0	0	0	0	0	0	0

Santa Fe Prairie Study

December 1997

Rich Hyerczyk

	A	AZ	BA	BB	BC	BD	BE	BF	BG	BH	BI
1		4-3	4-4	4-5	4-6	4-7	4-8	4-9	4-10	4-11	4-12
51	PHAARU	0	0	0	0	0	0	0	0	0	22
52	POAPRA	0	0	0	0	0	0	0	0	0	0
53	POLCOC	0	0	0	0	0	0	0	0	0	0
54	POPDEL	0	0	0	0	0	0	0	0	0	0
55	POTSIM	0	0	0	0	0	0	0	0	0	0
56	PRUVUL	0	0	1	0	0	0	0	0	0	0
57	PYCVIR	2	0	0	0	0	0	0	0	0	0
58	RANFLA	0	0	0	0	0	0	0	0	0	75
59	RATPIN	0	1	0	0	0	0	0	0	0	0
60	RHACAR	0	15	0	17	0	14	0	5	0	0
61	stumps	0	1	0	1	0	1	0	1	0	0
62	resprouts	0	13	0	7	0	10	0	3	0	0
63	RHAFRA	0	0	0	0	1	0	0	0	0	0
64	stumps	0	0	0	0	1	0	0	0	0	0
65	resprouts	0	0	0	0	3	0	0	0	0	0
66	ROSCAR	9	0	6	8	0	2	8	7	1	0
67	RUBOCC	0	0	0	0	0	0	0	0	0	0
68	RUDHIR	0	0	0	0	1	0	0	0	0	0
69	SALSPP	0	0	0	0	0	0	0	0	0	0
70	stumps	0	0	0	0	0	0	0	0	0	0
71	resprouts	0	0	0	0	0	0	0	0	0	0
72	SCUPAR	0	0	0	0	0	0	0	0	0	0
73	SILINT	0	0	0	30	5	10	0	0	0	0
74	SILLAC	0	0	0	0	0	0	0	0	0	0
75	SILTER	0	4	0	0	0	0	0	0	0	0
76	SMISTE	0	7	0	0	8	0	3	0	0	0
77	SOLALT	19	1	0	0	0	0	0	0	0	0
78	SOLGRN	1	0	0	0	0	0	1	0	0	0
79	SOLJUN	0	0	0	0	0	0	0	0	0	0
80	SOLRIG	0	0	0	0	0	0	0	0	0	0
81	SOLSPP	0	0	0	0	0	0	0	0	0	0
82	SOLJUN	0	0	0	0	0	0	0	0	0	0
83	SPAPEC	8	0	0	0	1	0	0	0	0	0
84	SPOHET	0	0	0	0	0	0	0	60	0	0
85	STACSP	0	0	0	0	0	0	0	0	0	0
86	THADAS	0	0	0	0	0	0	0	0	0	0
87	VIOLSP	0	0	0	0	0	0	0	0	0	0
88	VITRIP	0	0	0	0	0	0	0	0	0	0
89	SHELLS	0	0	0	1	1	1	0	0	1	1
90	FISTAX	0	0	0	0	0	0	0	0	0	0
91	MOSS#2	0	1	0	0	0	0	0	0	0	0
92	MOSS#3	0	0	0	0	0	0	0	0	0	0
93	BACGRA	0	0	0	0	0	0	0	0	0	0
94	ENDPUS	0	0	0	0	0	0	0	0	0	0
95	VERCAL	0	0	0	0	0	0	0	0	0	0
96	YMUSH	0	0	0	0	0	0	0	0	0	0
97	FLAVEL	0	0	0	0	0	0	0	0	0	0
98	WATER	0	0	0	0	0	0	0	0	0	0
99	FILL	0	0	0	0	0	0	0	0	0	0

Santa Fe Prairie Study

December 1997

Rich Hyerczyk

	A	BJ	BK	BL	BM	BN	BO	BP	BQ	BR	BS
1		4-13	4-14	4-15	4-16	4-17	4-18	5-1	5-2	5-3	5-4
2	Species										
3	ACHMIL	0	0	0	0	0	0	0	0	0	0
4	AGRALB	0	0	0	0	0	0	0	0	0	0
5	AGRSPP	0	0	0	0	0	0	0	0	0	0
6	ALLCAN	0	0	0	6	0	0	0	0	0	0
7	ALLCER	0	0	0	0	0	0	0	0	0	0
8	ANDGER	0	0	0	0	0	0	0	0	0	0
9	ANDSCO	0	0	0	0	0	0	0	0	0	0
10	ASTERI	0	0	0	0	0	0	0	0	0	0
11	CALCAN	25	0	0	0	0	0	0	0	0	0
12	CARSPP	0	100	80	0	0	0	0	0	21	24
13	CARPEN	0	0	0	0	0	0	0	0	0	0
14	CIRDIS	0	0	0	0	0	0	0	2	0	0
15	CIRSPP	0	0	0	0	0	0	0	0	0	0
16	COMRIC	0	0	0	0	0	0	0	0	0	0
17	CONSEP	1	0	0	0	0	0	0	0	0	0
18	CORPAL	0	0	0	0	0	0	0	0	0	0
19	CORRAC	0	0	0	0	0	0	0	5	14	0
20	stumps	0	0	0	0	0	0	0	4	5	0
21	resprouts	0	0	0	0	0	0	0	15	12	0
22	CORSTO	12	0	16	80	0	0	0	0	0	0
23	stumps	1	0	4	1	0	0	0	0	0	0
24	resprouts	2	0	7	1	0	0	0	0	0	0
25	CORTRI	0	0	0	0	0	0	0	1	0	0
26	DIPSYL	0	0	0	0	0	0	11	0	0	0
27	ERYYUC	0	0	0	0	0	0	0	0	0	0
28	EUPALT	0	0	0	0	0	0	0	0	0	0
29	FRAPES	0	0	0	0	0	0	0	0	0	0
30	stumps	0	0	0	0	0	0	0	0	0	0
31	resprout	0	0	0	0	0	0	0	0	0	0
32	FRAVIR	12	11	0	0	0	0	0	30	0	5
33	GALSPP	0	0	0	2	0	0	0	0	0	0
34	GAUBIE	0	0	6	0	0	0	0	0	0	0
35	GEUSPP	0	0	0	0	0	0	0	0	0	0
36	HEDPUL	0	2	0	0	0	0	0	0	0	0
37	HELGRO	0	1	2	0	0	0	0	1	0	0
38	HELISP	0	0	0	0	0	0	0	0	0	0
39	IRIVIR	0	0	0	2	0	0	0	0	0	0
40	JUNTEN	0	0	0	0	0	0	0	0	0	24
41	LITCAN	0	0	0	0	0	0	0	3	0	0
42	LYCAME	0	0	0	0	0	0	0	0	0	0
43	LYSNUM	0	0	0	1	0	0	0	0	0	0
44	MONFIS	0	2	3	0	0	0	0	17	0	0
45	MYRISP	0	0	0	0	50	50	0	0	0	0
46	OENBIE	0	1	4	0	0	0	4	6	2	0
47	PANCAP	0	0	0	0	0	0	0	0	0	0
48	PANIMP	0	0	0	0	0	0	0	1	0	0
49	PANVIR	0	0	0	0	0	0	0	0	0	0
50	PENDIG	0	0	0	0	0	0	0	0	0	0

Santa Fe Prairie Study

December 1997

Rich Hyerczyk

	A	BJ	BK	BL	BM	BN	BO	BP	BQ	BR	BS
1		4-13	4-14	4-15	4-16	4-17	4-18	5-1	5-2	5-3	5-4
51	PHAARU	0	0	0	20	0	0	100	0	0	25
52	POAPRA	0	1	0	0	0	0	0	0	0	0
53	POLCOC	0	0	0	0	50	50	0	0	0	0
54	POPDEL	0	0	0	0	0	0	0	0	0	0
55	POTSIM	0	0	0	0	0	0	0	0	0	0
56	PRUVUL	0	4	0	0	0	0	0	4	0	0
57	PYCVIR	2	0	0	0	0	0	0	0	0	0
58	RANFLA	0	0	0	0	0	0	0	0	0	0
59	RATPIN	0	0	0	0	0	0	0	0	0	0
60	RHACAR	9	0	0	0	0	0	0	0	32	0
61	stumps	1	0	0	0	0	0	0	0	2	0
62	resprouts	8	0	0	0	0	0	0	0	28	0
63	RHAFRA	0	0	2	0	0	0	11	0	0	0
64	stumps	0	0	1	0	0	0	1	0	0	0
65	resprouts	0	0	1	0	0	0	10	0	0	0
66	ROSCAR	1	12	0	0	0	0	6	15	8	0
67	RUBOCC	0	0	0	0	0	0	0	0	0	0
68	RUDHIR	0	0	0	0	0	0	0	0	0	0
69	SALSPP	0	0	0	0	0	0	0	0	0	0
70	stumps	0	0	0	0	0	0	0	0	0	0
71	resprouts	0	0	0	0	0	0	0	0	0	0
72	SCUPAR	0	0	0	0	0	0	0	0	0	0
73	SILINT	0	0	0	0	0	0	0	0	0	0
74	SILLAC	0	0	0	0	0	0	0	0	0	0
75	SILTER	0	0	0	0	0	0	0	0	0	0
76	SMISTE	2	0	3	0	0	0	0	1	0	0
77	SOLALT	3	0	0	0	0	0	3	0	0	5
78	SOLGRN	0	2	0	0	0	0	0	0	0	0
79	SOLJUN	0	0	0	0	0	0	0	0	0	0
80	SOLRIG	0	0	0	0	0	0	0	0	0	0
81	SOLSPP	0	0	0	0	0	0	0	0	1	0
82	SOLJUN	0	0	0	0	0	0	1	0	0	10
83	SPAPEC	0	0	0	0	0	0	0	0	0	0
84	SPOHET	0	0	3	0	0	0	0	0	0	0
85	STACSP	0	0	0	0	0	0	0	0	0	0
86	THADAS	0	0	0	0	0	0	0	0	0	0
87	VIOLSP	0	0	0	0	0	0	0	0	0	0
88	VITRIP	0	0	0	0	0	0	0	0	0	0
89	SHELLS	0	0	0	1	0	0	0	0	0	0
90	FISTAX	0	0	0	0	0	0	0	0	0	0
91	MOSS#2	0	0	0	0	0	0	0	0	0	0
92	MOSS#3	0	0	0	2	0	0	0	0	0	0
93	BACGRA	0	0	0	0	0	0	0	0	0	0
94	ENDPUS	0	0	0	0	0	0	0	0	0	0
95	VERCAL	0	0	0	1	0	0	0	0	0	0
96	YMUSH	0	0	0	0	0	0	0	0	0	0
97	FLAVEL	0	0	0	0	0	0	0	0	0	0
98	WATER	0	0	0	0	100	100	0	0	0	0
99	FILL	0	0	0	0	0	0	0	0	0	0

Santa Fe Prairie Study

December 1997

Rich Hyerczyk

	A	BT	BU	BV	BW	BX	BY	BZ	CA	CB	CC
1		5-5	5-6	5-7	5-8	5-9	5-10	5-11	5-12	5-13	5-14
2	Species										
3	ACHMIL	0	0	0	0	0	0	0	0	0	0
4	AGRALB	0	0	0	0	0	0	0	0	0	0
5	AGRSPP	0	0	0	0	0	0	0	0	0	0
6	ALLCAN	0	0	0	0	0	0	0	0	0	0
7	ALLCER	0	0	0	0	0	0	0	0	0	0
8	ANDGER	0	0	0	0	0	0	0	0	0	0
9	ANDSCO	0	0	0	0	0	0	0	0	0	0
10	ASTERI	0	0	0	0	0	0	0	0	0	0
11	CALCAN	0	0	0	0	0	0	0	0	95	0
12	CARSPP	100	90	100	92	25	46	100	0	0	100
13	CARPEN	0	0	0	0	0	0	0	0	0	0
14	CIRDIS	0	5	0	0	0	0	0	0	0	1
15	CIRSPP	0	0	0	0	0	0	0	0	0	0
16	COMRIC	0	0	0	0	6	0	0	0	0	0
17	CONSEP	0	0	0	0	0	0	0	0	0	0
18	CORPAL	0	0	0	0	0	0	0	0	0	0
19	CORRAC	0	0	0	0	0	0	0	0	4	0
20	stumps	0	0	0	0	0	0	0	0	1	0
21	resprouts	0	0	0	0	0	0	0	0	1	0
22	CORSTO	0	0	0	0	0	0	0	0	0	8
23	stumps	0	0	0	0	0	0	0	0	0	1
24	resprouts	0	0	0	0	0	0	0	0	0	1
25	CORTRI	0	6	0	0	0	0	2	0	0	0
26	DIPSYL	0	0	0	0	0	0	0	0	0	0
27	ERYYUC	0	0	0	0	0	0	0	0	0	0
28	EUPALT	0	0	0	0	0	10	0	0	0	0
29	FRAPES	0	0	0	0	0	0	0	0	0	0
30	stumps	0	0	0	0	0	0	0	0	0	0
31	resprout	0	0	0	0	0	0	0	0	0	0
32	FRAVIR	10	0	0	5	15	1	17	0	4	0
33	GALSPP	0	0	0	0	0	0	0	0	0	0
34	GAUBIE	0	0	1	0	0	0	0	0	0	0
35	GEUSPP	0	0	0	0	0	0	0	0	0	0
36	HEDPUL	0	0	0	0	0	0	0	0	0	0
37	HELGRO	2	0	2	1	0	4	0	0	0	3
38	HELISP	0	0	0	0	0	0	0	0	0	0
39	IRIVIR	0	0	0	0	0	0	0	0	0	0
40	JUNTEN	0	0	0	0	0	0	0	0	0	0
41	LITCAN	0	0	0	0	0	0	0	0	0	0
42	LYCAME	0	0	0	0	0	0	0	0	0	1
43	LYSNUM	0	0	0	0	0	0	0	0	0	0
44	MONFIS	5	2	19	9	0	0	8	0	0	0
45	MYRISP	0	0	0	0	0	0	0	0	0	0
46	OENBIE	11	0	6	8	1	5	0	0	0	5
47	PANCAP	0	0	0	0	0	0	0	0	0	0
48	PANIMP	0	0	0	1	0	0	0	0	0	0
49	PANVIR	0	0	0	0	0	0	0	0	1	0
50	PENDIG	0	0	0	0	0	0	0	0	0	0

Santa Fe Prairie Study

December 1997

Rich Hyerczyk

	A	BT	BU	BV	BW	BX	BY	BZ	CA	CB	CC
1		5-5	5-6	5-7	5-8	5-9	5-10	5-11	5-12	5-13	5-14
51	PHAARU	0	0	0	0	0	0	0	0	0	0
52	POAPRA	0	0	0	0	0	0	0	0	0	0
53	POLCOC	0	0	0	0	0	0	0	0	0	0
54	POPDEL	0	0	0	0	0	0	0	0	0	0
55	POTSIM	0	0	0	0	0	0	0	0	0	0
56	PRUVUL	0	0	0	0	0	0	0	0	0	0
57	PYCVIR	0	0	0	0	0	0	0	0	0	0
58	RANFLA	0	0	0	0	0	0	0	75	0	0
59	RATPIN	1	0	0	0	0	0	0	0	0	0
60	RHACAR	0	0	0	0	0	0	0	0	0	6
61	stumps	0	0	0	0	0	0	0	0	0	1
62	resprouts	0	0	0	0	0	0	0	0	0	2
63	RHAFRA	0	0	0	0	0	0	0	0	42	0
64	stumps	0	0	0	0	0	0	0	0	2	0
65	resprouts	0	0	0	0	0	0	0	0	21	0
66	ROSCAR	6	4	16	0	7	3	0	0	4	6
67	RUBOCC	0	0	0	0	0	0	0	0	0	0
68	RUDHIR	0	0	2	1	0	0	0	0	1	1
69	SALSPP	0	0	0	0	0	0	0	0	0	0
70	stumps	0	0	0	0	0	0	0	0	0	0
71	resprouts	0	0	0	0	0	0	0	0	0	0
72	SCUPAR	0	0	0	0	0	0	0	0	0	0
73	SILINT	0	0	0	0	0	0	0	0	0	0
74	SILLAC	0	0	0	0	0	0	0	0	0	0
75	SILTER	1	0	0	0	0	0	0	0	0	0
76	SMISTE	2	0	0	0	0	0	3	0	3	2
77	SOLALT	0	0	0	0	6	0	0	0	0	0
78	SOLGRN	0	0	0	4	0	3	0	0	0	3
79	SOLJUN	0	0	0	0	0	0	0	0	0	0
80	SOLRIG	0	0	0	0	0	0	0	0	0	0
81	SOLSPP	0	0	0	0	0	0	0	0	0	0
82	SOLJUN	8	1	0	0	0	0	0	0	0	0
83	SPAPEC	0	0	0	0	0	0	0	0	0	0
84	SPOHET	0	0	0	0	75	24	0	0	0	0
85	STACSP	0	0	0	0	0	0	0	0	0	0
86	THADAS	0	0	0	0	0	0	0	0	0	0
87	VIOLSP	0	0	0	0	0	0	0	0	0	0
88	VITRIP	0	0	0	0	0	0	0	0	1	0
89	SHELLS	0	0	0	0	0	0	0	1	1	0
90	FISTAX	0	0	0	0	0	0	0	0	49	0
91	MOSS#2	0	0	0	0	0	0	0	0	0	0
92	MOSS#3	0	0	0	0	0	0	0	0	1	0
93	BACGRA	0	0	0	0	0	0	0	0	0	0
94	ENDPUS	0	0	0	0	0	0	0	0	0	0
95	VERCAL	0	0	0	1	0	0	0	0	0	0
96	YMUSH	0	0	0	0	0	0	0	0	0	0
97	FLAVEL	0	0	0	0	0	0	0	0	0	0
98	WATER	0	0	0	0	0	0	0	0	0	0
99	FILL	0	0	0	0	0	0	0	0	0	0

Santa Fe Prairie Study

December 1997

Rich Hyerczyk

	A	CD	CE	CF	CG	CH	CI	CJ	CK	CL	CM
1		5-15	5-16	5-17	5-18	6-1	6-2	6-3	6-4	6-5	6-6
2	Species										
3	ACHMIL	0	0	0	0	0	0	0	0	0	0
4	AGRALB	0	0	0	0	46	0	0	0	0	0
5	AGRSPP	0	0	0	0	0	0	0	0	0	0
6	ALLCAN	0	0	0	0	0	0	0	0	0	0
7	ALLCER	0	0	0	0	0	0	0	0	0	0
8	ANDGER	0	0	0	0	0	0	0	0	0	0
9	ANDSCO	0	0	0	0	0	0	0	0	0	0
10	ASTERI	0	0	0	0	0	0	0	0	0	0
11	CALCAN	0	40	0	0	0	0	0	0	0	0
12	CARSPP	80	0	0	0	0	64	38	30	80	9
13	CARPEN	0	0	0	0	0	0	1	0	0	0
14	CIRDIS	0	0	0	0	0	0	0	0	0	0
15	CIRSPP	0	0	0	0	0	0	0	0	0	0
16	COMRIC	0	0	0	0	0	0	0	0	0	0
17	CONSEP	0	0	0	0	0	0	0	0	0	0
18	CORPAL	0	0	0	0	0	0	0	0	0	0
19	CORRAC	0	0	0	0	0	0	0	0	0	25
20	stumps	0	0	0	0	0	0	0	0	0	7
21	resprouts	0	0	0	0	0	0	0	0	0	15
22	CORSTO	12	13	0	0	0	0	0	0	0	0
23	stumps	1	2	0	0	0	0	0	0	0	0
24	resprouts	1	8	0	0	0	0	0	0	0	0
25	CORTRI	0	0	0	0	0	0	0	0	0	0
26	DIPSYL	0	0	0	0	5	5	0	0	0	0
27	ERYYUC	0	0	0	0	0	0	0	0	0	0
28	EUPALT	0	0	0	0	0	0	0	0	0	0
29	FRAPES	0	0	0	0	0	0	0	0	0	0
30	stumps	0	0	0	0	0	0	0	0	0	0
31	resprout	0	0	0	0	0	0	0	0	0	0
32	FRAVIR	15	0	0	0	0	0	1	1	15	0
33	GALSPP	0	1	0	0	0	0	0	0	0	0
34	GAUBIE	0	0	0	0	0	0	0	0	0	0
35	GEUSPP	0	0	0	0	2	0	0	0	0	0
36	HEDPUL	0	0	0	0	0	0	0	0	0	0
37	HELGRO	0	0	0	0	0	0	0	2	0	0
38	HELISP	0	0	0	0	0	0	0	0	0	0
39	IRIVIR	0	0	0	0	0	0	0	0	0	0
40	JUNTEN	0	0	0	0	0	1	0	0	0	0
41	LITCAN	0	0	0	0	0	0	0	0	0	0
42	LYCAME	0	0	0	0	0	0	0	0	0	0
43	LYSNUM	0	0	0	0	0	0	0	0	0	0
44	MONFIS	1	0	0	0	0	0	0	0	4	0
45	MYRISP	0	0	50	50	0	0	0	0	0	0
46	OENBIE	1	2	0	0	0	0	1	3	2	0
47	PANCAP	0	0	0	0	0	0	0	0	0	0
48	PANIMP	0	0	0	0	0	0	0	0	0	0
49	PANVIR	0	0	0	0	0	7	0	0	1	0
50	PENDIG	0	0	0	0	0	0	0	0	0	0

Santa Fe Prairie Study

December 1997

Rich Hyerczyk

	A	CD	CE	CF	CG	CH	CI	CJ	CK	CL	CM
1		5-15	5-16	5-17	5-18	6-1	6-2	6-3	6-4	6-5	6-6
51	PHAARU	0	0	0	0	35	0	0	0	0	0
52	POAPRA	0	0	0	0	0	0	2	0	0	0
53	POLCOC	0	0	50	50	0	0	0	0	0	0
54	POPDEL	0	0	0	0	0	0	0	0	0	0
55	POTSIM	0	0	0	0	0	0	0	0	0	0
56	PRUVUL	0	0	0	0	0	0	0	0	0	0
57	PYCVIR	0	0	0	0	0	0	0	2	6	0
58	RANFLA	0	0	0	0	0	0	0	0	0	0
59	RATPIN	0	0	0	0	0	0	0	0	0	0
60	RHACAR	15	0	0	0	0	0	0	0	0	0
61	stumps	1	0	0	0	0	0	0	0	0	0
62	resprouts	1	0	0	0	0	0	0	0	0	0
63	RHAFRA	0	40	0	0	0	0	0	0	0	0
64	stumps	0	1	0	0	0	0	0	0	0	0
65	resprouts	0	6	0	0	0	0	0	0	0	0
66	ROSCAR	0	1	0	0	0	0	0	0	12	6
67	RUBOCC	0	0	0	0	0	0	0	0	0	3
68	RUDHIR	2	0	0	0	0	0	0	0	0	0
69	SALSPP	0	0	0	0	0	0	0	0	0	0
70	stumps	0	0	0	0	0	0	0	0	0	0
71	resprouts	0	0	0	0	0	0	0	0	0	0
72	SCUPAR	0	0	0	0	0	0	0	0	0	0
73	SILINT	0	0	0	0	0	0	0	0	0	0
74	SILLAC	0	0	0	0	0	0	0	0	0	0
75	SILTER	0	0	0	0	0	0	0	0	0	0
76	SMISTE	0	0	0	0	0	0	0	12	0	0
77	SOLALT	0	0	0	0	0	0	0	0	0	0
78	SOLGRN	2	0	0	0	3	0	0	0	1	0
79	SOLJUN	0	0	0	0	4	16	0	50	0	15
80	SOLRIG	0	0	0	0	0	0	0	0	0	0
81	SOLSPP	0	0	0	0	0	0	0	0	0	0
82	SOLJUN	0	0	0	0	0	0	0	0	0	0
83	SPAPEC	0	0	0	0	0	0	0	0	0	0
84	SPOHET	5	0	0	0	0	0	0	0	0	0
85	STACSP	0	0	0	0	0	0	0	0		0
86	THADAS	0	0	0	0	0	0	0	0	0	0
87	VIOLSP	0	0	0	0	0	0	0	0	0	0
88	VITRIP	0	0	0	0	0	0	0	0	0	0
89	SHELLS	0	1	0	0	1	0	0	0	0	0
90	FISTAX	0	0	0	0	0	0	0	0	0	0
91	MOSS#2	0	0	0	0	0	0	0	0	0	0
92	MOSS#3	0	0	0	0	0	0	0	0	0	0
93	BACGRA	0	0	0	0	0	0	0	0	0	0
94	ENDPUS	0	0	0	0	0	0	0	0	0	0
95	VERCAL	0	0	0	0	1	1	6	0	0	0
96	YMUSH	0	0	0	0	0	0	0	0	0	0
97	FLAVEL	0	0	0	0	0	0	0	0	0	0
98	WATER	0	0	100	100	0	0	0	0	0	0
99	FILL	0	0	0	0	0	0	0	0	0	0

Santa Fe Prairie Study

December 1997

Rich Hyerczyk

	A	CN	CO	CP	CQ	CR	CS	CT	CU	CV	CW
1		6-7	6-8	6-9	6-10	6-11	6-12	6-13	6-14	6-15	6-16
2	Species										
3	ACHMIL	0	0	0	0	0	0	0	0	0	0
4	AGRALB	0	0	0	0	0	0	0	0	0	0
5	AGRSPP	0	0	0	0	0	0	0	0	0	0
6	ALLCAN	0	0	0	0	0	0	0	0	0	0
7	ALLCER	0	0	0	0	0	0	0	0	0	0
8	ANDGER	0	0	0	0	0	0	0	0	0	0
9	ANDSCO	4	0	0	0	0	0	0	0	0	0
10	ASTERI	0	0	0	0	0	0	0	0	0	0
11	CALCAN	0	0	0	0	0	0	0	0	0	0
12	CARSPP	18	85	100	75	65	30	10	75	50	90
13	CARPEN	9	0	0	0	0	0	0	0	0	0
14	CIRDIS	9	0	0	0	0	0	0	0	0	0
15	CIRSPPP	9	0	0	0	0	0	0	0	0	0
16	COMRIC	9	0	0	0	0	0	0	0	0	0
17	CONSEP	9	0	0	0	2	0	0	0	0	0
18	CORPAL	9	0	0	0	0	0	0	0	0	0
19	CORRAC	8	0	0	14	0	0	0	3	8	0
20	stumps	1	0	0	3	0	0	0	1	2	0
21	resprouts	2	0	0	5	0	0	0	2	2	0
22	CORSTO	0	0	0	1	0	100	75	0	0	0
23	stumps	0	0	0	1	0	1	1	0	0	0
24	resprouts	0	0	0	1	0	1	1	0	0	0
25	CORTRI	0	0	0	0	0	0	0	0	1	0
26	DIPSYL	0	0	0	0	0	0	0	0	0	0
27	ERYYUC	0	0	0	0	0	0	0	0	0	0
28	EUPALT	0	0	0	0	2	0	0	0	0	0
29	FRAPES	0	0	0	0	0	0	0	0	0	0
30	stumps	0	0	0	0	0	0	0	0	0	0
31	resprout	0	0	0	0	0	0	0	0	0	0
32	FRAVIR	2	28	2	0	13	0	0	18	0	0
33	GALSPP	0	0	0	0	0	0	0	1	0	0
34	GAUBIE	0	0	0	0	0	0	0	0	0	0
35	GEUSPP	0	0	0	0	0	0	0	0	0	0
36	HEDPUL	0	0	3	23	0	0	0	0	14	0
37	HELGRO	0	4	0	7	1	0	0	0	2	2
38	HELISP	0	0	0	0	0	0	0	0	0	0
39	IRIVIR	0	0	0	0	0	0	0	0	0	0
40	JUNTEN	0	0	0	0	0	0	0	0	0	0
41	LITCAN	0	0	0	0	0	0	0	0	1	0
42	LYCAME	0	0	0	0	1	0	0	0	1	0
43	LYSNUM	0	0	0	0	0	15	15	0	0	0
44	MONFIS	0	6	0	0	0	0	0	4	0	5
45	MYRISP	0	0	0	0	0	0	0	0	0	0
46	OENBIE	0	3	2	0	2	0	0	2	1	1
47	PANCAP	0	0	0	0	0	0	0	0	0	0
48	PANIMP	1	0	0	0	0	0	0	1	2	0
49	PANVIR	0	9	0	0	0	0	0	0	0	0
50	PENDIG	0	0	0	0	0	0	0	0	0	0

Santa Fe Prairie Study

December 1997

Rich Hyerczyk

	A	CN	CO	CP	CQ	CR	CS	CT	CU	CV	CW
1		6-7	6-8	6-9	6-10	6-11	6-12	6-13	6-14	6-15	6-16
51	PHAARU	0	0	0	0	0	0	0	0	0	0
52	POAPRA	0	0	0	0	0	0	0	0	0	0
53	POLCOC	0	0	0	0	0	0	0	0	0	0
54	POPDEL	0	0	0	0	0	0	0	0	0	0
55	POTSIM	0	0	0	0	0	0	0	0	0	0
56	PRUVUL	0	0	0	0	0	0	0	0	0	0
57	PYCVIR	0	0	0	0	0	0	0	0	3	0
58	RANFLA	0	0	0	0	0	0	0	0	0	0
59	RATPIN	0	0	1	0	0	0	0	0	0	0
60	RHACAR	0	0	0	0	0	0	0	0	0	0
61	stumps	0	0	0	0	0	0	0	0	0	0
62	resprouts	0	0	0	0	0	0	0	0	0	0
63	RHAFRA	0	0	0	0	0	0	0	0	0	0
64	stumps	0	0	0	0	0	0	0	0	0	0
65	resprouts	0	0	0	0	0	0	0	0	0	0
66	ROSCAR	4	15	4	0	1	0	0	14	11	30
67	RUBOCC	0	0	0	0	0	0	0	0	0	0
68	RUDHIR	0	0	0	0	0	0	0	0	1	1
69	SALSPP	0	0	0	0	0	0	0	0	0	0
70	stumps	0	0	0	0	0	0	0	0	0	0
71	resprouts	0	0	0	0	0	0	0	0	0	0
72	SCUPAR	0	0	0	0	0	0	0	0	0	0
73	SILINT	10	2	0	0	2	0	0	0	0	0
74	SILLAC	0	0	0	0	0	0	0	0	0	0
75	SILTER	0	0	0	0	1	0	0	0	3	0
76	SMISTE	2	3	3	27	3	0	0	0	0	0
77	SOLALT	6	0	0	0	0	0	0	0	0	0
78	SOLGRN	0	0	0	0	0	0	0	3	6	0
79	SOLJUN	0	0	21	0	0	0	0	0	0	0
80	SOLRIG	0	0	0	0	0	0	0	0	0	0
81	SOLSPP	0	0	0	0	0	0	0	0	0	0
82	SOLJUN	0	0	0	0	0	0	0	0	0	0
83	SPAPEC	0	0	0	0	0	0	0	0	0	0
84	SPOHET	0	0	0	0	0	0	0	0	50	0
85	STACSP	0	0	0	0	0	0	0	0	0	0
86	THADAS	0	0	0	0	0	0	0	0	0	0
87	VIOLSP	0	0	0	0	0	0	0	0	0	0
88	VITRIP	0	0	0	0	0	0	0	0	0	0
89	SHELLS	0	1	0	1	0	0	0	0	0	0
90	FISTAX	0	0	0	0	0	0	0	0	0	0
91	MOSS#2	0	0	0	0	0	0	0	0	0	0
92	MOSS#3	0	0	0	0	0	0	0	0	0	0
93	BACGRA	0	0	0	0	0	0	0	0	0	0
94	ENDPUS	0	0	0	0	0	0	0	0	0	0
95	VERCAL	0	0	1	0	0	0	0	1	0	0
96	YMUSH	0	0	0	0	0	0	0	0	0	0
97	FLAVEL	0	0	0	0	0	0	0	0	0	0
98	WATER	0	0	0	0	0	0	0	0	0	0
99	FILL	0	0	0	0	0	0	0	0	0	0

Santa Fe Prairie Study

December 1997

Rich Hyerczyk

	A	CX	CY	CZ	DA	DB	DC	DD	DE	DF	DG
1		6-17	6-18	6-19	6-20	7-1	7-2	7-3	7-4	7-5	7-6
2	Species										
3	ACHMIL	0	0	0	0	0	0	0	0	0	1
4	AGRALB	0	0	0	0	0	0	0	0	0	0
5	AGRSPP	0	0	0	0	0	0	0	0	0	0
6	ALLCAN	0	0	0	0	0	0	0	0	0	0
7	ALLCER	0	0	0	0	0	0	0	0	0	0
8	ANDGER	0	0	0	0	0	0	0	0	0	0
9	ANDSCO	0	0	0	0	0	0	0	0	0	0
10	ASTERI	0	0	0	0	0	0	0	0	0	0
11	CALCAN	0	0	0	0	0	0	0	0	0	0
12	CARSPP	0	0	0	0	0	0	100	100	100	100
13	CARPEN	0	0	0	0	0	0	0	0	0	0
14	CIRDIS	0	0	0	0	0	0	0	0	0	2
15	CIRSPP	0	0	0	0	0	0	0	0	0	0
16	COMRIC	0	0	0	0	0	0	0	0	0	0
17	CONSEP	0	0	0	0	0	0	0	0	0	0
18	CORPAL	0	0	0	0	0	0	0	0	0	0
19	CORRAC	0	0	0	0	0	0	0	0	0	0
20	stumps	0	0	0	0	0	0	0	0	0	0
21	resprouts	0	0	0	0	0	0	0	0	0	0
22	CORSTO	0	0	0	0	0	0	0	0	0	0
23	stumps	0	0	0	0	0	0	0	0	0	0
24	resprouts	0	0	0	0	0	0	0	0	0	0
25	CORTRI	0	0	0	0	0	0	0	0	0	0
26	DIPSYL	0	0	0	0	0	0	0	0	0	0
27	ERYYUC	0	0	0	0	0	0	0	0	15	0
28	EUPALT	0	0	0	0	0	0	0	0	0	0
29	FRAPES	0	0	0	0	0	0	0	0	0	0
30	stumps	0	0	0	0	0	0	0	0	0	0
31	resprout	0	0	0	0	0	0	0	0	0	0
32	FRAVIR	0	0	0	0	0	0	0	0	22	0
33	GALSPP	0	0	0	0	0	0	0	0	0	0
34	GAUBIE	0	0	0	0	0	0	0	0	0	0
35	GEUSPP	0	0	0	0	0	1	0	0	0	0
36	HEDPUL	0	0	0	0	0	2	4	0	0	0
37	HELGRO	0	0	0	0	0	0	0	0	0	0
38	HELISP	0	0	0	0	0	0	0	0	0	0
39	IRIVIR	0	0	0	0	0	0	0	0	0	0
40	JUNTEN	0	0	0	0	0	0	0	0	0	0
41	LITCAN	0	0	0	0	0	0	0	0	0	0
42	LYCAME	0	0	0	0	0	0	0	0	0	0
43	LYSNUM	0	0	0	0	0	0	0	0	0	0
44	MONFIS	0	0	0	0	0	0	0	0	6	3
45	MYRISP	0	0	0	0	0	0	0	0	0	0
46	OENBIE	0	0	0	0	0	1	2	2	0	0
47	PANCAP	0	0	0	0	0	0	0	0	0	0
48	PANIMP	0	0	0	0	0	0	0	0	0	0
49	PANVIR	0	0	0	0	0	0	0	0	0	0
50	PENDIG	0	0	0	0	0	0	0	0	0	0

Santa Fe Prairie Study

December 1997

Rich Hyerczyk

	A	CX	CY	CZ	DA	DB	DC	DD	DE	DF	DG
1		6-17	6-18	6-19	6-20	7-1	7-2	7-3	7-4	7-5	7-6
51	PHAARU	100	0	0	0	100	75	3	13	0	0
52	POAPRA	0	0	0	0	0	0	0	0	0	0
53	POLCOC	0	0	0	0	0	0	0	0	0	0
54	POPDEL	0	0	0	0	0	0	0	0	0	0
55	POTSIM	0	0	0	0	0	0	0	0	0	0
56	PRUVUL	0	0	0	0	0	0	0	0	1	0
57	PYCVIR	0	0	0	0	0	0	0	0	0	0
58	RANFLA	0	0	0	0	0	0	0	0	0	0
59	RATPIN	0	0	0	0	0	0	0	0	0	0
60	RHACAR	0	0	0	0	0	0	0	0	0	0
61	stumps	0	0	0	0	0	0	0	0	0	0
62	resprouts	0	0	0	0	0	0	0	0	0	0
63	RHAFRA	0	0	0	0	0	0	0	0	0	0
64	stumps	0	0	0	0	0	0	0	0	0	0
65	resprouts	0	0	0	0	0	0	0	0	0	0
66	ROSCAR	0	0	0	0	0	0	0	0	0	6
67	RUBOCC	0	0	0	0	0	0	0	0	0	0
68	RUDHIR	0	0	0	0	0	0	0	0	0	0
69	SALSPP	0	0	0	0	0	0	0	0	0	0
70	stumps	0	0	0	0	0	0	0	0	0	0
71	resprouts	0	0	0	0	0	0	0	0	0	0
72	SCUPAR	0	0	0	0	0	0	0	0	0	0
73	SILINT	0	0	0	0	0	0	0	0	0	0
74	SILLAC	0	0	0	0	0	0	0	0	0	0
75	SILTER	0	0	0	0	0	0	0	0	0	0
76	SMISTE	0	0	0	0	0	0	0	0	0	8
77	SOLALT	0	0	0	0	0	7	0	0	2	0
78	SOLGRN	0	0	0	0	2	14	20	15	18	0
79	SOLJUN	0	0	0	0	0	0	0	0	0	0
80	SOLRIG	0	0	0	0	0	0	0	0	0	0
81	SOLSPP	0	0	0	0	0	0	0	0	0	0
82	SOLJUN	0	0	0	0	4	0	0	0	0	3
83	SPAPEC	0	0	0	0	0	0	0	0	0	0
84	SPOHET	0	0	0	0	0	0	0	0	0	0
85	STACSP	0	0	0	0	0	0	0	0	0	0
86	THADAS	0	0	0	0	0	0	0	0	0	0
87	VIOLSP	0	0	0	0	0	0	0	0	0	0
88	VITRIP	0	0	0	0	0	0	0	0	0	0
89	SHELLS	1	0	0	0	0	1	0	0	0	0
90	FISTAX	0	0	0	0	0	0	0	0	0	0
91	MOSS#2	0	0	0	0	0	0	0	0	0	0
92	MOSS#3	0	0	0	0	0	0	0	0	0	0
93	BACGRA	0	0	0	0	0	0	0	0	1	0
94	ENDPUS	0	0	0	0	0	0	0	0	1	0
95	VERCAL	0	0	0	0	0	0	0	0	0	0
96	YMUSH	0	0	0	0	0	0	0	0	0	0
97	FLAVEL	0	0	0	0	0	0	0	0	0	0
98	WATER	0	100	100	0	0	0	0	0	0	0
99	FILL	0	0	0	100	0	0	0	0	0	0

Santa Fe Prairie Study

December 1997

Rich Hyerczyk

	A	DH	DI	DJ	DK	DL	DM	DN	DO	DP	DQ
1		7-7	7-8	7-9	7-10	7-11	7-12	7-13	7-14	7-15	7-16
2	Species										
3	ACHMIL	0	0	0	0	0	0	0	0	0	0
4	AGRALB	0	0	0	0	0	0	0	0	0	0
5	AGRSPP	0	0	0	0	0	0	0	0	0	0
6	ALLCAN	0	0	0	0	0	0	0	0	0	0
7	ALLCER	0	0	0	0	0	0	0	0	0	0
8	ANDGER	0	0	0	0	0	0	0	0	0	0
9	ANDSCO	0	0	0	0	0	0	0	0	0	0
10	ASTERI	0	0	0	0	0	0	0	0	0	0
11	CALCAN	0	0	0	0	0	10	10	0	0	0
12	CARSPP	70	0	100	100	90	0	0	30	20	90
13	CARPEN	0	0	0	0	0	0	0	0	0	0
14	CIRDIS	0	0	0	0	0	0	0	0	0	0
15	CIRSPP	0	0	0	0	0	0	0	0	0	0
16	COMRIC	0	0	0	0	0	0	0	0	0	0
17	CONSEP	0	0	0	0	0	0	0	0	0	0
18	CORPAL	0	0	0	0	0	0	0	0	0	0
19	CORRAC	0	0	0	0	0	0	15	9	0	10
20	stumps	0	0	0	0	0	0	1	5	0	3
21	resprouts	0	0	0	0	0	0	1	6	0	7
22	CORSTO	0	0	0	0	0	100	10	0	27	0
23	stumps	0	0	0	0	0	1	4	0	1	0
24	resprouts	0	0	0	0	0	12	4	0	1	0
25	CORTRI	3	0	0	0	0	0	0	0	0	0
26	DIPSYL	0	0	0	0	0	0	0	0	0	0
27	ERYYUC	0	0	0	0	0	0	0	0	0	0
28	EUPALT	0	0	3	0	0	0	0	0	0	0
29	FRAPES	0	0	0	0	0	0	0	0	0	0
30	stumps	0	0	0	0	0	0	0	0	0	0
31	resprout	0	0	0	0	0	0	0	0	0	0
32	FRAVIR	0	8	0	0	1	0	0	3	0	2
33	GALSPP	0	0	0	0	0	0	4	0	0	0
34	GAUBIE	0	0	0	0	0	0	0	0	0	1
35	GEUSPP	0	4	0	0	0	0	0	0	0	0
36	HEDPUL	0	0	6	4	6	0	0	0	0	0
37	HELGRO	0	0	0	0	0	0	0	0	0	0
38	HELISP	0	0	0	0	0	0	0	0	0	0
39	IRIVIR	0	0	0	0	0	0	0	0	0	0
40	JUNTEN	0	0	0	0	0	0	0	0	0	0
41	LITCAN	0	0	0	0	0	0	0	0	0	0
42	LYCAME	0	0	0	0	0	0	0	0	0	0
43	LYSNUM	0	0	0	0	0	0	0	0	0	0
44	MONFIS	0	9	0	0	0	0	0	0	0	2
45	MYRISP	0	0	0	0	0	0	0	0	0	0
46	OENBIE	10	11	3	0	3	0	0	4	0	1
47	PANCAP	0	0	0	0	0	0	0	0	0	0
48	PANIMP	0	0	4	3	0	0	0	5	0	1
49	PANVIR	0	0	0	0	0	0	0	0	0	0
50	PENDIG	0	0	0	0	0	0	0	0	0	0

Santa Fe Prairie Study

December 1997

Rich Hyerczyk

	A	DH	DI	DJ	DK	DL	DM	DN	DO	DP	DQ
1		7-7	7-8	7-9	7-10	7-11	7-12	7-13	7-14	7-15	7-16
51	PHAARU	0	0	0	0	0	0	0	0	0	0
52	POAPRA	0	0	0	0	0	0	0	0	0	0
53	POLCOC	0	0	0	0	0	0	0	0	0	0
54	POPDEL	0	0	0	0	0	0	0	0	0	0
55	POTSIM	0	0	0	0	0	0	0	0	0	0
56	PRUVUL	0	1	0	0	0	0	0	0	0	0
57	PYCVIR	0	0	0	0	0	0	0	0	0	0
58	RANFLA	0	0	0	0	0	0	0	0	0	0
59	RATPIN	0	1	0	0	0	0	0	0	0	0
60	RHACAR	0	0	0	0	25	0	25	2	0	0
61	stumps	0	0	0	0	1	0	1	2	0	0
62	resprouts	0	0	0	0	10	0	9	13	0	0
63	RHAFRA	0	0	0	0	0	0	60	0	0	0
64	stumps	0	0	0	0	0	0	2	0	0	0
65	resprouts	0	0	0	0	0	0	25	0	0	0
66	ROSCAR	0	0	0	10		0	5	3	10	4
67	RUBOCC	0	0	0	0	0	0	0	0	0	0
68	RUDHIR	0	1	0	0	0	0	0	0	0	1
69	SALSPP	0	0	0	0	0	0	0	0	0	0
70	stumps	0	0	0	0	0	0	0	0	0	0
71	resprouts	0	0	0	0	0	0	0	0	0	0
72	SCUPAR	0	0	0	0	0	0	0	0	0	0
73	SILINT	0	0	0	0	0	0	0	0	0	0
74	SILLAC	0	0	0	0	0	0	0	0	0	0
75	SILTER	0	0	0	0	0	0	0	0	0	0
76	SMISTE	0	0	0	0	3	0	3	25	2	0
77	SOLALT	9	0	2	0	0	0	0	0	6	2
78	SOLGRN	0	0	0	0	6	0	0	0	0	0
79	SOLJUN	0	0	0	0	0	0	0	0	0	0
80	SOLRIG	0	0	0	0	0	0	0	0	0	0
81	SOLSPP	0	0	0	0	0	0	0	0	0	0
82	SOLJUN	0	0	4	6	0	0	0	0	0	0
83	SPAPEC	4	0	0	0	0	0	0	0	0	0
84	SPOHET	0	69	0	0	0	0	0	0	0	0
85	STACSP	0	0	0	0	0	0	0	0	0	0
86	THADAS	0	0	1	1	0	0	0	0	0	0
87	VIOLSP	0	0	0	0	0	0	0	0	0	0
88	VITRIP	0	0	0	0	0	0	0	0	0	0
89	SHELLS	0	1	0	0	1	0	1	0	1	0
90	FISTAX	0	0	0	0	0	0	0	0	0	0
91	MOSS#2	0	0	0	0	0	0	0	0	0	0
92	MOSS#3	0	0	0	0	0	0	0	0	0	0
93	BACGRA	0	0	0	0	0	0	0	0	0	0
94	ENDPUS	0	0	0	0	0	0	0	1	0	0
95	VERCAL	0	0	0	0	0	0	0	1	0	0
96	YMUSH	0	0	0	0	0	0	0	0	0	0
97	FLAVEL	0	0	0	0	0	0	0	0	0	0
98	WATER	0	0	0	0	0	0	0	0	0	0
99	FILL	0	0	0	0	0	0	0	0	0	0

Santa Fe Prairie Study

December 1997

Rich Hyerczyk

	A	DR	DS	DT	DU	DV	DW	DX	DY	DZ	EA
1		7-17	7-18	7-19	8-1	8-2	8-3	8-4	8-5	8-6	8-7
2	Species										
3	ACHMIL	0	0	0	0	0	0	0	0	0	0
4	AGRALB	0	0	0	0	0	0	0	0	0	0
5	AGRSPP	0	0	0	0	0	0	0	0	0	0
6	ALLCAN	0	0	0	0	0	0	0	0	0	0
7	ALLCER	0	0	0	0	0	0	0	0	0	0
8	ANDGER	0	0	0	0	0	0	0	0	0	0
9	ANDSCO	0	0	0	0	0	0	0	0	0	0
10	ASTERI	0	0	0	0	0	0	0	0	0	0
11	CALCAN	0	0	0	0	0	0	0	0	0	0
12	CARSPP	0	0	0	0	75	26	18	34	82	100
13	CARPEN	0	0	0	0	0	0	0	0	0	0
14	CIRDIS	0	0	0	0	0	0	0	0	0	0
15	CIRSPP	0	0	0	0	0	0	0	0	0	0
16	COMRIC	0	0	0	0	0	0	0	0	0	0
17	CONSEP	0	0	0	0	0	0	0	0	0	0
18	CORPAL	0	0	0	0	0	0	0	0	0	0
19	CORRAC	52	0	0	0	0	0	0	0	0	0
20	stumps	7	0	0	0	0	0	0	0	0	0
21	resprouts	12	0	0	0	0	0	0	0	0	0
22	CORSTO	0	0	0	0	0	0	0	0	0	0
23	stumps	0	0	0	0	0	0	0	0	0	0
24	resprouts	0	0	0	0	0	0	0	0	0	0
25	CORTRI	0	0	0	0	0	0	0	6	0	0
26	DIPSYL	0	0	0	0	0	0	0	0	0	0
27	ERYYUC	0	0	0	0	0	0	0	6	0	0
28	EUPALT	0	0	0	0	0	0	0	0	0	0
29	FRAPES	0	0	0	0	0	0	0	0	0	0
30	stumps	0	0	0	0	0	0	0	0	0	0
31	resprout	0	0	0	0	0	0	0	0	0	0
32	FRAVIR	0	0	0	0	0	0	0	5	4	0
33	GALSPP	0	0	0	0	0	0	0	0	0	0
34	GAUBIE	0	0	0	0	0	0	0	0	0	3
35	GEUSPP	0	0	0	0	0	0	0	0	0	0
36	HEDPUL	0	0	0	0	0	0	0	0	0	0
37	HELGRO	0	0	0	0	0	2	0	0	0	0
38	HELISP	0	0	0	0	0	0	0	0	0	0
39	IRIVIR	0	0	0	0	0	0	0	0	0	0
40	JUNTEN	0	0	0	0	0	0	3	0	0	0
41	LITCAN	0	0	0	0	0	0	0	0	0	0
42	LYCAME	0	0	0	1	0	0	0	0	0	0
43	LYSNUM	0	0	0	0	0	0	0	0	0	0
44	MONFIS	0	0	0	0	0	0	0	0	0	0
45	MYRISP	0	0	0	0	0	0	0	0	0	0
46	OENBIE	1	0	0	2	0	0	0	0	4	2
47	PANCAP	0	0	0	0	0	0	4	0	0	0
48	PANIMP	0	0	0	0	0	0	1	0	1	0
49	PANVIR	0	0	0	0	0	0	0	0	0	3
50	PENDIG	0	0	0	0	0	0	0	0	0	0

Santa Fe Prairie Study

December 1997

Rich Hyerczyk

	A	DR	DS	DT	DU	DV	DW	DX	DY	DZ	EA
1		7-17	7-18	7-19	8-1	8-2	8-3	8-4	8-5	8-6	8-7
51	PHAARU	90	0	0	100	0	30	24	0	0	0
52	POAPRA	0	0	0	0	0	0	0	0	0	0
53	POLCOC	0	0	0	0	0	0	0	0	0	0
54	POPDEL	0	0	0	0	0	0	2	0	0	0
55	POTSIM	0	0	0	0	0	0	0	0	0	0
56	PRUVUL	0	0	0	0	0	0	0	0	0	0
57	PYCVIR	0	0	0	0	0	0	0	0	0	0
58	RANFLA	0	0	0	0	0	0	0	0	0	0
59	RATPIN	0	0	0	0	0	0	0	0	0	0
60	RHACAR	0	0	0	0	0	0	0	10	0	0
61	stumps	0	0	0	0	0	0	0	5	0	0
62	resprouts	0	0	0	0	0	0	0	8	0	0
63	RHAFRA	7	0	0	0	0	0	0	0	0	0
64	stumps	1	0	0	0	0	0	0	0	0	0
65	resprouts	2	0	0	0	0	0	0	0	0	0
66	ROSCAR	0	0	0	1	0	0	0	0	12	1
67	RUBOCC	0	0	0	0	0	0	0	0	0	0
68	RUDHIR	0	0	0	0	0	0	0	0	0	0
69	SALSPP	0	0	0	0	0	0	0	0	0	0
70	stumps	0	0	0	0	0	0	0	0	0	0
71	resprouts	0	0	0	0	0	0	0	0	0	0
72	SCUPAR	0	0	0	0	0	0	30	0	0	0
73	SILINT	0	0	0	0	0	0	0	0	1	0
74	SILLAC	0	0	0	0	0	0	0	0	0	0
75	SILTER	0	0	0	0	0	0	0	0	0	0
76	SMISTE	0	0	0	0	8	0	0	6	2	3
77	SOLALT	0	0	0	0	10	0	0	0	0	1
78	SOLGRN	0	0	0	0	2	30	0	2	8	0
79	SOLJUN	0	0	0	0	0	0	0	0	0	8
80	SOLRIG	0	0	0	0	0	0	0	0	8	0
81	SOLSPP	0	0	0	0	0	0	10	0	0	0
82	SOLJUN	0	0	0	0	0	0	0	0	0	0
83	SPAPEC	0	0	0	0	0	0	0	0	0	0
84	SPOHET	0	0	0	0	0	0	0	0	0	0
85	STACSP	0	0	0	0	0	0	0	0	0	0
86	THADAS	0	0	0	0	0	0	0	0	0	0
87	VIOLSP	0	0	0	0	0	0	0	0	0	0
88	VITRIP	0	0	0	0	0	0	0	0	0	0
89	SHELLS	0	0	0	0	0	0	0	0	0	1
90	FISTAX	0	0	0	0	0	0	0	0	0	0
91	MOSS#2	0	0	0	0	0	0	0	0	0	0
92	MOSS#3	0	0	0	0	0	0	0	0	0	0
93	BACGRA	0	0	0	0	0	0	0	0	0	0
94	ENDPUS	0	0	0	0	0	0	0	0	0	0
95	VERCAL	0	0	0	0	0	0	0	0	0	0
96	YMUSH	0	0	0	0	0	0	0	0	0	0
97	FLAVEL	0	0	0	0	0	0	0	0	0	0
98	WATER	0	100	100	0	0	0	0	0	0	0
99	FILL	0	0	0	0	0	0	0	0	0	0

Santa Fe Prairie Study

December 1997

Rich Hyerczyk

1	A	EB	EC	ED	EE	EF	EG	EH	EI	EJ	EK
		8-8	8-9	8-10	8-11	8-12	8-13	8-14	8-15	8-16	8-17
2	Species										
3	ACHMIL	0	0	0	0	0	0	0	1	0	0
4	AGRALB	0	0	0	0	0	0	0	0	0	0
5	AGRSP	0	0	0	0	0	0	0	0	0	0
6	ALLCAN	0	0	0	0	0	0	0	0	0	0
7	ALLCER	0	0	0	0	0	0	0	0	0	0
8	ANDGER	12	0	0	0	0	0	0	0	0	0
9	ANDSCO	0	0	0	0	0	0	0	0	0	0
10	ASTERI	0	0	0	0	0	0	0	0	0	0
11	CALCAN	0	0	0	0	0	5	0	0	0	0
12	CARSP	60	100	90	9	0	60	90	10	10	3
13	CARPEN	0	0	0	0	0	0	0	0	0	0
14	CIRDIS	0	0	0	0	0	0	0	0	0	0
15	CIRSP	0	0	0	0	0	0	0	0	0	0
16	COMRIC	0	0	0	0	0	0	1	0	0	1
17	CONSEP	0	1	1	0	1	0	0	0	0	0
18	CORPAL	0	0	0	0	0	0	0	0	0	0
19	CORRAC	0	0	0	0	0	0	0	28	50	0
20	stumps	0	0	0	0	0	0	0	14	20	0
21	resprouts	0	0	0	0	0	0	0	29	35	0
22	CORSTO	0	0	0	0	0	0	0	0	0	27
23	stumps	0	0	0	0	0	0	0	0	0	4
24	resprouts	0	0	0	0	0	0	0	0	0	4
25	CORTRI	0	0	0	0	0	0	0	0	0	0
26	DIPSYL	0	0	0	0	0	0	0	0	0	0
27	ERYYUC	0	0	0	0	0	0	0	0	0	0
28	EUPALT	0	0	0	0	0	0	0	0	0	0
29	FRAPES	0	0	0	0	70	0	0	0	0	0
30	stumps	0	0	0	0	1	0	0	0	0	0
31	resprout	0	0	0	0	26	0	0	0	0	0
32	FRAVIR	0	0	0	0	0	0	0	2	0	0
33	GALSP	0	0	0	0	0	0	0	0	0	0
34	GAUBIE	0	0	1	0	25	0	0	0	0	0
35	GEUSP	0	0	0	0	0	0	0	0	0	0
36	HEDPUL	0	0	9	0	2	0	12	0	0	0
37	HELGRO	3	3	0	0	0	10	6	0	0	0
38	HELISP	0	0	0	0	0	0	0	0	0	0
39	IRIVIR	0	0	0	0	0	0	0	0	0	0
40	JUNTEN	0	0	0	0	0	0	0	0	0	0
41	LITCAN	0	0	0	0	0	0	0	0	0	0
42	LYCAME	0	0	0	0	0	0	0	0	0	4
43	LYSNUM	0	0	0	0	0	0	0	0	0	0
44	MONFIS	0	0	0	0	0	0	0	3	0	0
45	MYRISP	0	0	0	0	0	0	0	0	0	0
46	OENBIE	0	0	1	7	0	1	1	0	0	0
47	PANCAP	0	0	0	0	0	0	0	0	0	0
48	PANIMP	0	0	1	0	0	0	1	0	0	0
49	PANVIR	0	0	0	0	0	0	0	0	0	0
50	PENDIG	0	3	0	0	0	0	0	0	0	0

Santa Fe Prairie Study

December 1997

Rich Hyerczyk

	A	EB	EC	ED	EE	EF	EG	EH	EI	EJ	EK
1		8-8	8-9	8-10	8-11	8-12	8-13	8-14	8-15	8-16	8-17
51	PHAARU	0	0	0	0	0	0	0	0	0	60
52	POAPRA	0	0	0	0	0	0	0	0	0	0
53	POLCOC	0	0	0	0	0	0	0	0	0	0
54	POPDEL	0	0	0	0	0	0	0	0	0	0
55	POTSIM	2	0	0	0	0	0	0	0	0	0
56	PRUVUL	0	0	0	0	0	0	0	0	0	0
57	PYCVIR	0	0	0	0	0	0	0	0	0	1
58	RANFLA	0	0	0	0	0	0	0	0	0	0
59	RATPIN	0	0	0	0	0	0	0	0	0	0
60	RHACAR	0	0	0	0	0	0	0	0	0	0
61	stumps	0	0	0	0	0	0	0	0	0	0
62	resprouts	0	0	0	0	0	0	0	0	0	0
63	RHAFRA	0	0	0	0	0	0	0	0	0	0
64	stumps	0	0	0	0	0	0	0	0	0	0
65	resprouts	0	0	0	0	0	0	0	0	0	0
66	ROSCAR	3	0	2	8	7	7	0	10	0	0
67	RUBOCC	0	0	0	0	0	0	0	0	0	0
68	RUDHIR	0	0	0	0	0	0	0	0	0	0
69	SALSPP	0	0	0	0	0	0	0	0	0	0
70	stumps	0	0	0	0	0	0	0	0	0	0
71	resprouts	0	0	0	0	0	0	0	0	0	0
72	SCUPAR	0	0	0	0	0	0	0	0	0	0
73	SILINT	0	0	0	0	0	0	0	0	0	0
74	SILLAC	0	0	0	0	0	0	0	0	0	0
75	SILTER	0	0	0	0	0	0	0	0	0	0
76	SMISTE	3	0	0	15	0	20	0	27	15	0
77	SOLALT	14	1	12	0	0	0	5	0	0	0
78	SOLGRN	9	0	2	8	3	0	0	0	0	0
79	SOLJUN	0	0	0	0	0	0	0	0	0	0
80	SOLRIG	0	0	0	0	0	0	0	0	0	0
81	SOLSPP	0	0	0	0	0		0	0	0	0
82	SOLJUN	0	0	0	0	0	0	0		0	0
83	SPAPEC	0	0	0	0	0	0	0	0	0	0
84	SPOHET	0	0	0	0	0	0	0	5	0	0
85	STACSP	0	0	0	0	1	0	0	0	0	0
86	THADAS	0	0	0	0	0	0	0	0	0	0
87	VIOLSP	0	0	0	0	0	0	0	0	0	0
88	VITRIP	0	0	0	0	0	0	0	0	0	0
89	SHELLS	0	0	1	1	0	0	0	0	0	1
90	FISTAX	0	0	0	0	0	0	0	0	0	0
91	MOSS#2	0	3	55	0	1	0	0	0	0	0
92	MOSS#3	0	0	0	0	0	0	0	0	0	0
93	BACGRA	0	0	0	0	0	0	0	0	0	0
94	ENDPUS	0	0	0	0	0	0	0	0	0	0
95	VERCAL	0	0	0	0	0	0	0	0	0	0
96	YMUSH	1	0	0	0	0	0	0	0	0	0
97	FLAVEL	0	0	0	0	0	0	0	0	0	0
98	WATER	0	0	0	0	0	0	0	0	0	0
99	FILL	0	0	0	0	0	0	0	0	0	0

Santa Fe Prairie Study

December 1997

Rich Hyerczyk

	A	EL	EM	EN	EO	EP	EQ	ER	ES	ET	EU
1		8-18	8-19	8-20	9-1	9-2	9-3	9-4	9-5	9-6	9-7
2	Species										
3	ACHMIL	0	0	0	0	0	0	0	6	7	0
4	AGRALB	0	0	0	0	0	0	0	0	0	0
5	AGRSPP	0	0	0	0	0	0	0	0	0	0
6	ALLCAN	0	0	0	0	0	0	0	0	0	0
7	ALLCER	0	0	0	0	0	0	0	0	0	0
8	ANDGER	0	0	0	0	0	0	0	0	0	0
9	ANDSCO	0	0	0	0	0	0	0	0	0	0
10	ASTERI	0	0	0	0	0	0	0	0	0	0
11	CALCAN	0	0	0	0	75	40	0	0	0	0
12	CARSPP	0	0	0	0	0	50	80	100	100	0
13	CARPEN	0	0	0	0	0	0	0	0	0	0
14	CIRDIS	0	0	0	0	0	0	0	0	0	0
15	CIRSPP	0	0	0	0	0	0	0	0	0	0
16	COMRIC	0	0	0	0	0	0	0	0	0	0
17	CONSEP	0	0	0	0	0	0	0	0	0	0
18	CORPAL	0	0	0	0	0	0	0	0	0	0
19	CORRAC	0	0	0	0	0	0	0	0	6	0
20	stumps	0	0	0	0	0	0	0	0	1	0
21	resprouts	0	0	0	0	0	0	0	0	3	0
22	CORSTO	0	0	0	0	0	0	0	0	0	0
23	stumps	0	0	0	0	0	0	0	0	0	0
24	resprouts	0	0	0	0	0	0	0	0	0	0
25	CORTRI	0	0	0	0	0	0	0	0	0	0
26	DIPSYL	0	0	0	0	0	0	0	0	0	0
27	ERYYUC	0	0	0	0	0	0	0	0	0	0
28	EUPALT	0	0	0	0	0	0	0	0	0	0
29	FRAPES	0	0	0	0	0	20	0	0	0	0
30	stumps	0	0	0	0	0	1	0	0	0	0
31	resprout	0	0	0	0	0	9	0	0	0	0
32	FRAVIR	0	0	0	0	0	0	0	9	0	0
33	GALSPP	0	0	0	0	0	0	0	0	0	0
34	GAUBIE	0	0	0	0	0	0	0	0	0	0
35	GEUSPP	0	0	0	0	0	0	0	0	0	1
36	HEDPUL	0	0	0	0	0	0	0	0	0	0
37	HELGRO	0	0	0	0	0	12	12	0	0	0
38	HELISP	0	0	0	0	0	0	0	0	0	0
39	IRIVIR	0	0	0	0	0	0	0	0	0	0
40	JUNTEN	0	0	0	0	0	0	0	0	0	0
41	LITCAN	0	0	0	0	0	0	0	0	0	0
42	LYCAME	0	0	0	0	0	0	0	0	0	0
43	LYSNUM	0	0	0	0	0	0	0	0	0	0
44	MONFIS	0	0	0	0	0	0	0	0	1	0
45	MYRISP	0	0	0	0	0	0	0	0	0	0
46	OENBIE	0	0	0	0	0	0	0	16	0	0
47	PANCAP	0	0	0	0	0	0	0	0	0	0
48	PANIMP	0	0	0	0	0	1	0	2	0	0
49	PANVIR	0	0	0	0	0	0	0	0	0	0
50	PENDIG	0	0	0	0	0	0	0	0	0	0

Santa Fe Prairie Study

December 1997

Rich Hyerczyk

	A	EL	EM	EN	EO	EP	EQ	ER	ES	ET	EU
1		8-18	8-19	8-20	9-1	9-2	9-3	9-4	9-5	9-6	9-7
51	PHAARU	100	0	0	100	20	0	7	1	0	0
52	POAPRA	0	0	0	0	0	0	0	0	0	0
53	POLCOC	0	0	0	0	0	0	0	0	0	0
54	POPDEL	0	0	0	0	0	0	0	0	0	0
55	POTSIM	0	0	0	0	0	0	0	0	0	0
56	PRUVUL	0	0	0	0	0	0	0	2	0	0
57	PYCVIR	0	0	0	0	0	0	0	0	0	0
58	RANFLA	0	0	0	0	0	0	0	0	0	0
59	RATPIN	0	0	0	0	0	0	0	0	0	0
60	RHACAR	0	0	0	0	0	0	0	0	0	25
61	stumps	0	0	0	0	0	0	0	0	0	1
62	resprouts	0	0	0	0	0	0	0	0	0	12
63	RHAFRA	0	0	0	0	0	0	0	0	0	0
64	stumps	0	0	0	0	0	0	0	0	0	0
65	resprouts	0	0	0	0	0	0	0	0	0	0
66	ROSCAR	0	0	0	0	0	0	0	2	8	0
67	RUBOCC	0	0	0	0	0	0	0	0	0	0
68	RUDHIR	0	0	0	0	0	0	0	2	0	0
69	SALSPP	0	0	0	0	100	0	0	0	0	0
70	stumps	0	0	0	0	1	0	0	0	0	0
71	resprouts	0	0	0	0	8	0	0	0	0	0
72	SCUPAR	0	0	0	0	0	0	0	0	0	0
73	SILINT	0	0	0	0	0	0	0	0	0	0
74	SILLAC	0	0	0	0	0	0	0	0	0	0
75	SILTER	0	0	0	0	0	0	0	0	0	0
76	SMISTE	0	0	0	0	0	20	8	8	0	0
77	SOLALT	0	0	0	0	0	4	30	0	8	10
78	SOLGRN	0	0	0	0	0	20	40	5	8	25
79	SOLJUN	0	0	0	0	0	0	0	0	0	0
80	SOLRIG	0	0	0	0	0	0	0	0	0	0
81	SOLSPP	0	0	0	0	0	0	0	0	0	0
82	SOLJUN	0	0	0	0	0	0	0	0	0	0
83	SPAPEC	0	0	0	5	0	0	0	0	0	0
84	SPOHET	0	0	0	0	0	0	0	0	0	0
85	STACSP	0	0	0	0	0	0	0	0	0	0
86	THADAS	0	0	0	0	0	0	0	0	1	0
87	VIOLSP	0	0	0	0	0	0	0	0	0	0
88	VITRIP	0	0	0	0	0	0	0	0	0	0
89	SHELLS	1	0	0	0	1	0	0	0	0	0
90	FISTAX	0	0	0	0	0	1	0	0	0	0
91	MOSS#2	0	0	0	0	0	0	0	0	0	0
92	MOSS#3	0	0	0	0	0	0	0	0	0	0
93	BACGRA	0	0	0	0	0	0	0	0	0	0
94	ENDPUS	0	0	0	0	0	0	0	0	0	0
95	VERCAL	0	0	0	0	0	0	0	0	0	0
96	YMUSH	0	0	0	0	0	0	0	0	0	0
97	FLAVEL	0	0	0	0	0	0	0	0	0	0
98	WATER	0	100	0	0	0	0	0	0	0	0
99	FILL	0	0	100	0	0	0	0	0	0	0

Santa Fe Prairie Study

December 1997

Rich Hyerczyk

	A	EV	EW	EX	EY	EZ	FA	FB	FC	FD	FE
1		9-8	9-9	9-10	9-11	9-12	9-13	9-14	9-15	9-16	9-17
2	Species										
3	ACHMIL	0	0	0	0	0	0	0	1	0	0
4	AGRALB	0	0	0	0	0	0	0	0	0	0
5	AGRSP	0	0	0	0	0	0	0	0	0	0
6	ALLCAN	0	0	0	0	0	0	0	0	0	0
7	ALLCER	0	0	0	0	0	0	0	0	0	0
8	ANDGER	0	0	0	0	0	0	0	0	0	0
9	ANDSCO	0	0	0	0	0	0	0	0	0	0
10	ASTERI	0	0	0	0	0	0	0	0	0	0
11	CALCAN	0	0	0	0	0	0	0	0	0	0
12	CARSPP	98	94	0	0	80	10	95	30	90	0
13	CARPEN	0	0	0	0	0	0	0	0	0	0
14	CIRDIS	0	0	0	0	0	0	0	0	8	0
15	CIRSP	0	0	0	0	0	0	0	0	0	0
16	COMRIC	0	0	0	0	0	0	0	0	0	0
17	CONSEP	0	0	0	0	0	0	0	0	0	0
18	CORPAL	0	0	0	0	0	0	0	0	0	0
19	CORRAC	0	0	0	0	0	0	0	0	11	0
20	stumps	0	0	0	0	0	0	0	0	8	0
21	resprouts	0	0	0	0	0	0	0	0	15	0
22	CORSTO	0	0	0	0	0	0	0	0	0	28
23	stumps	0	0	0	0	0	0	0	0	0	1
24	resprouts	0	0	0	0	0	0	0	0	0	1
25	CORTRI	0	0	0	0	0	0	0	0	0	0
26	DIPSYL	0	0	0	0	0	0	0	0	0	0
27	ERYYUC	0	0	0	0	0	0	0	0	0	0
28	EUPALT	0	0	0	0	0	0	0	0	0	0
29	FRAPES	0	0	0	0	9	5	0	0	0	17
30	stumps	0	0	0	0	1	1	0	0	0	3
31	resprout	0	0	0	0	10	1	0	0	0	8
32	FRAVIR	0	0	0	0	0	0	0	10	0	0
33	GALSPP	0	0	0	0	0	0	0	0	0	2
34	GAUBIE	0	0	0	0	0	0	0	2	0	0
35	GEUSPP	0	1	6	3	0	0	2	2	0	2
36	HEDPUL	0	0	0	0	0	0	3	0	0	0
37	HELGRO	0	5	0	0	1	0	3	7	2	0
38	HELISP	0	0	0	0	0	0	0	0	0	0
39	IRIVIR	0	0	0	0	0	0	0	0	0	0
40	JUNTEN	0	0	0	0	0	0	0	0	0	0
41	LITCAN	0	0	0	0	0	0	0	0	0	0
42	LYCAME	0	0	0	0	0	0	0	0	0	0
43	LYSNUM	0	0	0	0	0	0	0	0	0	0
44	MONFIS	0	1	0	0	0	0	0	0	6	0
45	MYRISP	0	0	0	0	0	0	0	0	0	0
46	OENBIE	1	2	2	1	0	0	0	3	4	0
47	PANCAP	0	0	0	0	0	0	0	0	0	0
48	PANIMP	4	6	0	0	0	0	2	0	0	0
49	PANVIR	0	0	0	0	0	33	0	0	0	0
50	PENDIG	0	0	0	0	0	0	0	0	0	0

Santa Fe Prairie Study

December 1997

Rich Hyerczyk

	A	EV	EW	EX	EY	EZ	FA	FB	FC	FD	FE
1		9-8	9-9	9-10	9-11	9-12	9-13	9-14	9-15	9-16	9-17
51	PHAARU	0	0	0	0	0	0	0	0	0	30
52	POAPRA	0	0	26	0	0	0	0	0	0	0
53	POLCOC	0	0	0	0	0	0	0	0	0	0
54	POPDEL	0	0	0	0	0	0	0	0	0	0
55	POTSIM	0	0	0	0	0	0	0	0	0	0
56	PRUVUL	0	0	0	0	0	0	0	0	0	0
57	PYCVIR	0	0	0	0	0	0	0	0	0	0
58	RANFLA	0	0	0	0	0	0	0	0	0	0
59	RATPIN	0	0	0	0	0	0	0	0	0	0
60	RHACAR	0	0	0	0	3	0	0	0	0	0
61	stumps	0	0	0	0	1	0	0	0	0	0
62	resprouts	0	0	0	0	1	0	0	0	0	0
63	RHAFRA	0	0	0	0	0	0	0	0	0	0
64	stumps	0	0	0	0	0	0	0	0	0	0
65	resprouts	0	0	0	0	0	0	0	0	0	0
66	ROSCAR	20	4	3	5	6	0	0	0	0	0
67	RUBOCC	0	0	0	0	0	0	0	0	0	0
68	RUDHIR	0	0	0	0	0	0	0	0	0	0
69	SALSPP	0	0	0	0	0	0	0	0	0	0
70	stumps	0	0	0	0	0	0	0	0	0	0
71	resprouts	0	0	0	0	0	0	0	0	0	0
72	SCUPAR	0	0	0	0	0	0	0	0	0	0
73	SILINT	0	0	0	0	0	0	0	0	0	0
74	SILLAC	0	0	0	0	0	0	0	0	0	0
75	SILTER	0	0	0	0	0	0	0	0	0	0
76	SMISTE	0	0	0	18	6	0	0	0	0	0
77	SOLALT	12	8	0	0	0	4	3	0	0	0
78	SOLGRN	2	23	39	40	0	0	0	0	6	0
79	SOLJUN	0	0	0	0	0	0	0	0	0	0
80	SOLRIG	0	0	0	0	0	0	0	0	0	0
81	SOLSPP	0	0	0	0	0	0	0	0	0	0
82	SOLJUN	19	0	14	0	0	0	0	0	0	0
83	SPAPEC	0	0	0	0	0	0	0	0	0	0
84	SPOHET	0	0	0	0	0	0	0	7	0	0
85	STACSP	0	0	1	0	0	0	0	0	0	0
86	THADAS	0	0	0	0	0	0	0	0	0	0
87	VIOLSP	0	0	0	0	0	0	0	0	0	0
88	VITRIP	0	0	0	0	0	0	0	0	0	7
89	SHELLS	0	1	0	1	1	1	1	0	1	0
90	FISTAX	0	0	3	0	0	0	0	0	0	0
91	MOSS#2	0	1	28	0	0	0	0	0	0	0
92	MOSS#3	0	0	0	0	0	0	0	0	0	0
93	BACGRA	0	0	0	0	0	0	0	0	0	0
94	ENDPUS	0	0	0	0	0	0	0	0	0	0
95	VERCAL	0	0	0	0	0	0	0	0	0	0
96	YMUSH	0	0	0	0	0	0	0	0	0	0
97	FLAVEL	0	0	0	0	0	0	0	0	0	0
98	WATER	0	0	0	0	0	0	0	0	0	0
99	FILL	0	0	0	0	0	0	0	0	0	0

Santa Fe Prairie Study

December 1997

Rich Hyerczyk

	A	FF	FG	FH	FI	FJ	FK	FL	FM	FN	FO
1		9-18	9-19	9-20	12-2	12-3	13-2	13-3	14-2	14-3	15-2
2	Species										
3	ACHMIL	0	0	0	0	0	0	0	0	0	0
4	AGRALB	0	0	0	0	0	0	0	0	0	0
5	AGRSP	0	1	0	0	0	0	0	0	0	0
6	ALLCAN	0	1	0	0	0	0	0	0	0	0
7	ALLCER	0	0	0	0	0	0	0	0	0	0
8	ANDGER	0	0	0	0	0	0	0	0	0	0
9	ANDSCO	0	0	0	0	0	0	0	0	0	0
10	ASTERI	0	0	0	0	0	0	0	0	0	0
11	CALCAN	0	0	0	0	0	0	0	0	0	0
12	CARSP	0	0	0	0	0	0	0	0	0	0
13	CARPEN	0	0	0	0	0	0	0	0	0	0
14	CIRDIS	0	0	0	0	0	0	0	0	0	0
15	CIRSP	0	0	0	0	0	0	0	0	0	0
16	COMRIC	0	0	0	0	0	0	0	0	0	0
17	CONSEP	0	0	0	0	0	0	0	0	0	0
18	CORPAL	0	0	0	0	0	0	0	0	0	0
19	CORRAC	0	0	0	0	0	0	0	0	0	0
20	stumps	0	0	0	0	0	0	0	0	0	0
21	resprouts	0	0	0	0	0	0	0	0	0	0
22	CORSTO	0	0	0	0	0	0	0	0	0	0
23	stumps	0	0	0	0	0	0	0	0	0	0
24	resprouts	0	0	0	0	0	0	0	0	0	0
25	CORTRI	0	0	0	0	0	0	0	0	0	0
26	DIPSYL	0	0	0	0	0	0	0	0	0	0
27	ERYUC	0	0	0	0	0	0	0	0	0	0
28	EUPALT	0	0	0	0	0	0	0	0	0	0
29	FRAPES	0	12	0	0	0	0	0	0	0	0
30	stumps	0	2	0	0	0	0	0	0	0	0
31	resprout	0	6	0	0	0	0	0	0	0	0
32	FRAVIR	0	0	0	0	0	0	0	0	0	0
33	GALSP	0	0	0	0	0	0	0	0	0	0
34	GAUBIE	0	0	0	0	0	0	0	0	0	0
35	GEUSP	0	3	0	0	0	0	0	0	0	0
36	HEDPUL	0	0	0	0	0	0	0	0	0	0
37	HELGRO	0	0	0	0	0	0	0	0	0	0
38	HELISP	0	0	0	0	0	0	0	0	0	0
39	IRIVIR	0	0	0	0	0	0	0	0	0	0
40	JUNTEN	0	0	0	0	0	0	0	0	0	0
41	LITCAN	0	0	0	0	0	0	0	0	0	0
42	LYCAME	0	0	0	0	0	0	0	0	0	0
43	LYSNUM	0	0	0	0	0	0	0	0	0	0
44	MONFIS	0	0	0	0	0	0	0	0	0	0
45	MYRISP	0	0	0	0	0	0	0	0	0	0
46	OENBIE	0	0	0	0	0	0	0	0	0	0
47	PANCAP	0	0	0	0	0	0	0	0	0	0
48	PANIMP	0	0	0	0	0	0	0	0	0	0
49	PANVIR	0	0	0	0	0	0	0	0	0	0
50	PENDIG	0	0	0	0	0	0	0	0	0	0

Santa Fe Prairie Study

December 1997

Rich Hyerczyk

	A	FF	FG	FH	FI	FJ	FK	FL	FM	FN	FO
1		9-18	9-19	9-20	12-2	12-3	13-2	13-3	14-2	14-3	15-2
51	PHAARU	95	90	0	0	0	0	0	0	0	0
52	POAPRA	0	0	0	0	0	0	0	0	0	0
53	POLCOC	0	0	0	0	0	0	0	0	0	0
54	POPDEL	0	0	0	0	0	0	0	0	0	0
55	POTSIM	0	0	0	0	0	0	0	0	0	0
56	PRUVUL	0	0	0	0	0	0	0	0	0	0
57	PYCVIR	0	0	0	0	0	0	0	0	0	0
58	RANFLA	0	0	0	0	0	0	0	0	0	0
59	RATPIN	0	0	0	0	0	0	0	0	0	0
60	RHACAR	0	14	0	0	0	0	0	0	0	0
61	stumps	0	2	0	0	0	0	0	0	0	0
62	resprouts	0	5	0	0	0	0	0	0	0	0
63	RHAFRA	40	0	0	0	0	0	0	0	0	0
64	stumps	1	0	0	0	0	0	0	0	0	0
65	resprouts	3	0	0	0	0	0	0	0	0	0
66	ROSCAR	0	0	0	0	0	0	0	0	0	0
67	RUBOCC	0	0	0	0	0	0	0	0	0	0
68	RUDHIR	0	0	0	0	0	0	0	0	0	0
69	SALSPP	0	0	0	0	0	0	0	0	0	0
70	stumps	0	0	0	0	0	0	0	0	0	0
71	resprouts	0	0	0	0	0	0	0	0	0	0
72	SCUPAR	0	0	0	0	0	0	0	0	0	0
73	SILINT	0	0	0	0	0	0	0	0	0	0
74	SILLAC	0	0	0	0	0	0	0	0	0	0
75	SILTER	0	0	0	0	0	0	0	0	0	0
76	SMISTE	0	0	0	0	0	0	0	0	0	0
77	SOLALT	0	0	0	0	0	0	0	0	0	0
78	SOLGRN	0	0	0	0	0	0	0	0	0	0
79	SOLJUN	0	0	0	0	0	0	0	0	0	0
80	SOLRIG	0	0	0	0	0	0	0	0	0	0
81	SOLSPP	0	1	0	0	0	0	0	0	0	0
82	SOLJUN	0	0	0	0	0	0	0	0	0	0
83	SPAPEC	0	0	0	0	0	0	0	0	0	0
84	SPOHET	0	0	0	0	0	0	0	0	0	0
85	STACSP	0	0	0	0	0	0	0	0	0	0
86	THADAS	0	0	0	0	0	0	0	0	0	0
87	VIOLSP	0	0	0	0	0	0	0	0	0	0
88	VITRIP	0	0	0	0	0	0	0	0	0	0
89	SHELLS	0	0	0	0	0	0	0	0	0	0
90	FISTAX	0	0	0	0	0	0	0	0	0	0
91	MOSS#2	0	0	0	0	0	0	0	0	0	0
92	MOSS#3	0	1	0	0	0	0	0	0	0	0
93	BACGRA	0	0	0	0	0	0	0	0	0	0
94	ENDPUS	0	0	0	0	0	0	0	0	0	0
95	VERCAL	0	0	0	0	0	0	0	0	0	0
96	YMUSH	0	0	0	0	0	0	0	0	0	0
97	FLAVEL	0	0	0	0	0	0	0	0	0	0
98	WATER	0	0	0	100	100	100	100	100	100	100
99	FILL	0	0	100	0	0	0	0	0	0	0

Santa Fe Prairie Study

December 1997

Rich Hyerczyk

	A	FP	FQ
1		15-3	16-2
2	Species		
3	ACHMIL	0	0
4	AGRALB	0	0
5	AGRSP	0	0
6	ALLCAN	0	0
7	ALLCER	0	0
8	ANDGER	0	0
9	ANDSCO	0	0
10	ASTERI	0	0
11	CALCAN	0	0
12	CARSPP	0	0
13	CARPEN	0	0
14	CIRDIS	0	0
15	CIRSP	0	0
16	COMRIC	0	0
17	CONSEP	0	0
18	CORPAL	0	0
19	CORRAC	0	0
20	stumps	0	0
21	resprouts	0	0
22	CORSTO	0	0
23	stumps	0	0
24	resprouts	0	0
25	CORTRI	0	0
26	DIPSYL	0	0
27	ERYYUC	0	0
28	EUPALT	0	0
29	FRAPES	0	0
30	stumps	0	0
31	resprout	0	0
32	FRAVIR	0	0
33	GALSPP	0	0
34	GAUBIE	0	0
35	GEUSPP	0	0
36	HEDPUL	0	0
37	HELGRO	0	0
38	HELISP	0	0
39	IRIVIR	0	0
40	JUNTEN	0	0
41	LITCAN	0	0
42	LYCAME	0	0
43	LYSNUM	0	0
44	MONFIS	0	0
45	MYRISP	0	0
46	OENBIE	0	0
47	PANCAP	0	0
48	PANIMP	0	0
49	PANVIR	0	0
50	PENDIG	0	0

Santa Fe Prairie Study

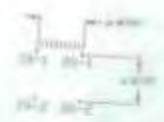
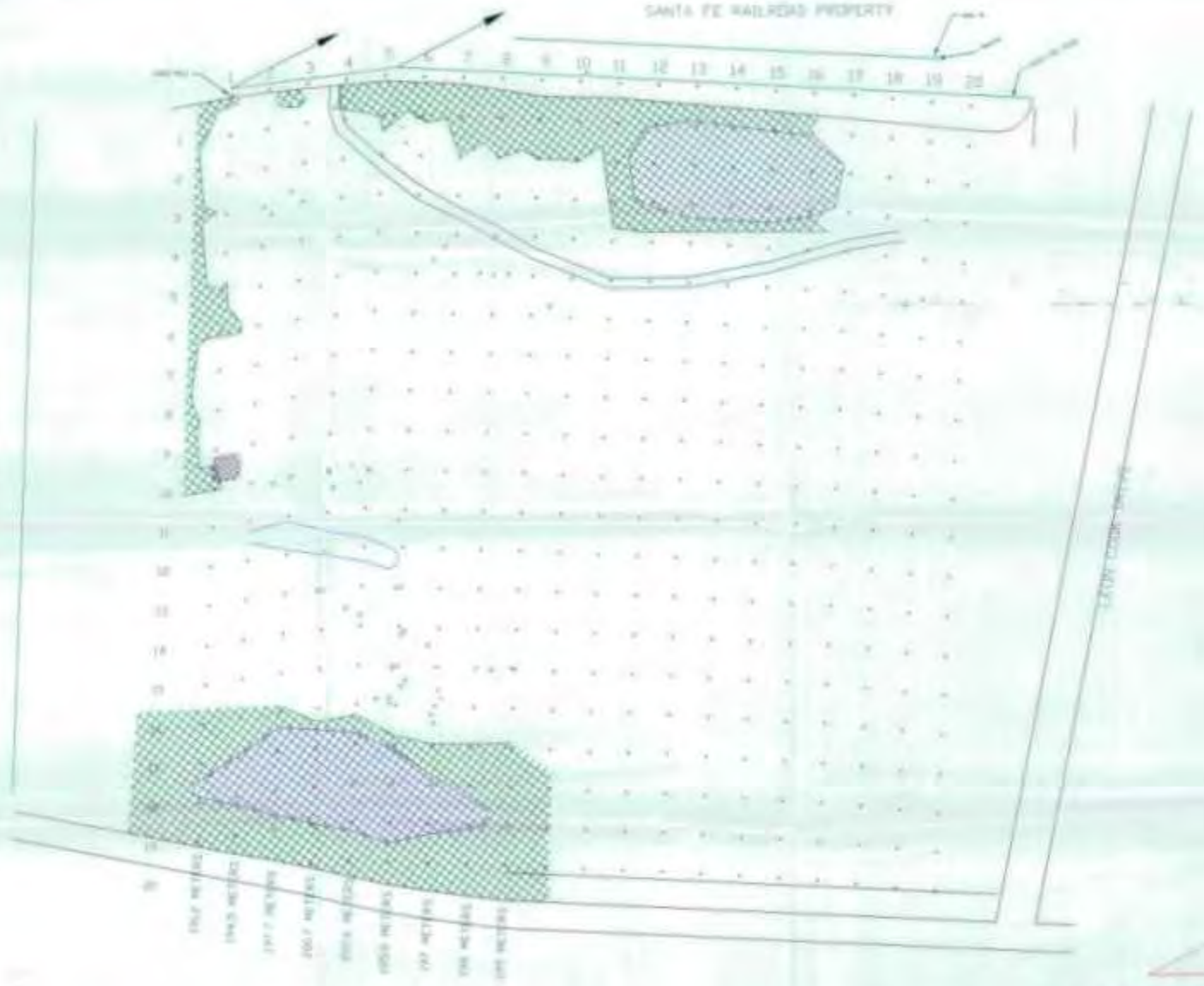
December 1997

Rich Hyerczyk

	A	FP	FQ
1		15-3	16-2
51	PHAARU	0	0
52	POAPRA	0	0
53	POLCOC	0	0
54	POPDEL	0	0
55	POTSIM	0	0
56	PRUVUL	0	0
57	PYCVIR	0	0
58	RANFLA	0	0
59	RATPIN	0	0
60	RHACAR	0	0
61	stumps	0	0
62	resprouts	0	0
63	RHAFRA	0	0
64	stumps	0	0
65	resprouts	0	0
66	ROSCAR	0	0
67	RUBOCC	0	0
68	RUDHIR	0	0
69	SALSPP	0	0
70	stumps	0	0
71	resprouts	0	0
72	SCUPAR	0	0
73	SILINT	0	0
74	SILLAC	0	0
75	SILTER	0	0
76	SMISTE	0	0
77	SOLALT	0	0
78	SOLGRN	0	0
79	SOLJUN	0	0
80	SOLRIG	0	0
81	SOLSPP	0	0
82	SOLJUN	0	0
83	SPAPEC	0	0
84	SPOHET	0	0
85	STACSP	0	0
86	THADAS	0	0
87	VIOLSP	0	0
88	VITRIP	0	0
89	SHELLS	0	0
90	FISTAX	0	0
91	MOSS#2	0	0
92	MOSS#3	0	0
93	BACGRA	0	0
94	ENDPUS	0	0
95	VERCAL	0	0
96	YMUSH	0	0
97	FLAVEL	0	0
98	WATER	100	100
99	FILL	0	0

SANTA FE RAILROAD PROPERTY

U.P. PROPERTY



- POND
- ART MUSEUM
- PATH
- BERM
- REED CANOPY GRASS
- HAZEL MUD
- PLOT
- DITCH
- STREET

1007 METERS
 1003 METERS
 1007 METERS
 1007 METERS
 1003 METERS
 1000 METERS
 100 METERS
 100 METERS
 100 METERS

* SCALE
 2 CM = 1 METER
 1 CM = 2 METERS
 0.5 CM = 10 METERS

FOR SANTA FE FRAME
 SCALE: 1:100 (1 CM = 1 METER) S.F.
 DATE: _____
 AREA: _____

SF-1