



Jim Edgar Panther Creek State Fish & Wildlife Area

2024-2025
A Cass County
Star-Gazette Publication
In Cooperation with the
Illinois Department
of Natural Resources

FREE!
Maps Inside
Please Take One

**Over 20
Appetizers!**

**Free WiFi
& Gaming
Machines!**



Duke & Joannie's
BAR AND GRILL

**Fresh
Homemade
Salad Bar!**

**Daily Specials
& Cold beer!**

Kitchen Hours

Wednesday- Thursday

4:00 PM - 8:00 PM

Friday

4:00 PM - 9:00 PM

Saturday

11:00 AM - 9:00 PM

Sunday-Tuesday

CLOSED

**Burgers ♦ Tenderloins
Ribeye Sandwiches**

**Served Every
Friday & Saturday**

Catfish Fillets & Fritters

**Buffalo ♦ Walleye
Ribeye Steaks!**

**Try our large
homemade salad bar!**

216 S. Main ♦ Chandlerville ♦ 217-458-2821



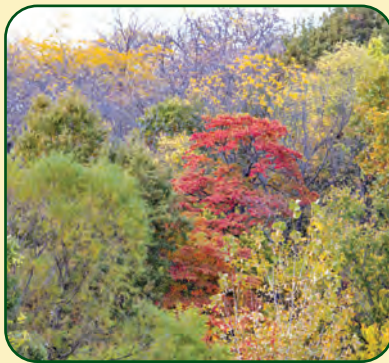
TABLE OF CONTENTS

| | |
|----------------|---------------------------------|
| Page 3 | Information & Safety |
| Page 5 | Site Trails |
| Page 7 | Camping & Outdoors |
| Page 9 | Site Maps |
| Page 13 | Water Access |
| Page 14 | Hunting Grounds |

Welcome to Jim Edgar Panther Creek State Fish & Wildlife Area!

This year brought many new exciting changes!

My name is Bryan Smith, and I am the new Site Superintendent at Jim Edgar. I started my career with the state here at Jim Edgar and worked my way up from Site Tech to Site Assistant and now as the Site Superintendent. I have also been at Helfrich WPC in those same capacities so when it comes to our Controlled Pheasant hunting program, I know all the ins and outs to everything!



I am beyond excited to come back to Jim Edgar as the Site Superintendent. I look forward to being part of this great site and community. I am eager to be part of the ongoing programs and look forward to adding new things to continually push the site forward into the future.

Throughout 2023-2024, the awesome crew at Jim Edgar have been busy building four new information kiosks that are placed in the campground and the day use areas that provide informational pamphlets, books, and maps. New mile marker signs for all hiking and equestrian trails have been installed. We have had two interns, Faith and Audra, who have been mapping our 51 miles of trails for updated maps at the site.

The Site techs and the Conservation Workers have been busy with tree trimming at the campgrounds and trails. A new kayak launch has been added to Prairie Lake Boat Docks. Workers have been working to keep things in top shape for our educational workshops and seminars on subjects ranging from birds, reptiles, deer hunting, archery, wing shooting clinics and game food prep. We look forward to seeing returning and new individuals to these opportunities.

Jim Edgar hosts three lakes that provide beautiful scenery and great recreational activities for all. Gridley, Prairie, and Drake Lakes give everyone the opportunity to fish, boat, kayak, and canoe. The beautiful water and scenery make for a wonderful getaway that is right in your backyard. The lakes have plenty of bass, bluegill, crappie, catfish, muskie, and trout!

The crew at Jim Edgar welcomes you to enjoy the great outdoors! We invite you to come camp, ride horses, bike, hunt, kayak, or fish in our 16,500 acres. Please call us at 217-452-7741 for any questions or thoughts you have!

We are excited to welcome you to Jim Edgar Panther Creek State Fish and Wildlife Area!

-Bryan Smith
Site Superintendent

Jim Edgar Panther Creek State Fish & Wildlife Area

10149 County Hwy 11
Chandlerville, IL 62627
217-452-7741

Office Hours

Monday - Friday
7:30 a.m. - 3:30 p.m.
Unless otherwise posted on the door

Located

- 25 miles northwest of Springfield off State IL Route 125
- 10 miles northeast of Virginia
- 10 miles west of Petersburg and New Salem State Historic Site
- 10 miles northwest of Ashland



Publication Credits

Publisher: CherryRoad Media
Graphic Design: Kaitlyn Copley
Marketing Manager: Jaime Chapman
Editors: Michelle Carty & Sally Lael

Photography Credits

Kaitlyn Copley, Susie Smith, Brian DeLoche, Bill Mitchell, Metro Stock

Informative Resources

Illinois Dept. of Natural Resources
<http://www.dnr.illinois.gov>

Hunter Windshield Card
<http://dnr.illinois.gov/windshieldcard/index.asp>

Jim Edgar Panther Creek
<https://www.dnr.illinois.gov/Parks/Pages/JimEdgarPantherCreek.aspx>

Camping & Shelter Reservations
camp.exploremoreil.com or call (866)716-6550

Illinois State Police
<https://www.isp.state.il.us/>

SITE INFORMATION

HISTORY

Settled and farmed by the mid-1800s, the contiguous farmsteads that composed Jim Edgar Panther Creek were purchased from 1968-1974 by Commonwealth Edison for development of a coal-fired, electric-power generating plant and a 5,000-acre cooling lake. The company named the 16,550-acre tract "Site M" for nearby Menard County, where coal to fuel the power plant was to be mined. Commonwealth Edison leased about half of the acreage for cropland, and through a cooperative agreement with the IDNR also provided limited upland and forest game hunting. Through the years, hunters applying for permits to the area became well-acquainted with the Site M name.

Commonwealth Edison abandoned its plans to build a power plant at Site M in the 1980s. By virtue of its size and location, Site M became an unparalleled opportunity for the IDNR to address critical conservation needs and meet outdoor recreation demands. With funds specifically designated for conservation purposes, the State of Illinois added the acreage to the public trust in June 1993, making Site M the largest tract ever acquired by the IDNR at that time.

Effective January 1, 2001, Panther Creek Conservation Area was absorbed into JEPC in an effort to avoid confusion and simplify site regulations. This brings the total acres of JEPC to 16,550. Panther Creek CA is now known as the West Open Unit.

CONSERVATION EFFORTS

Forests, confined primarily to steep terrain, cover 6,000 acres of JEPC. Common hardwood species include American elm, black walnut, black cherry and several types of oaks, including white, black and bur. Because the timberland was affected by extensive logging and grazing through the years, the Department is managing this area to enhance its forest wildlife habitat. Scattered pockets of wetlands at JEPC are associated with upland depressions, farm ponds and drainage ways. Common plants in these areas include long-leaved and horned pondweed, duckweed, rice cutgrass, reed canary grass and bulrush, as well as black willow. A severely degraded segment of Cox and Panther creeks,



near their confluence in the northwestern portion of the site, has undergone stream bank stabilization and is part of a model watershed project to improve the Illinois River system. Because agriculture on a lease basis is an integral management component for conservation and fiscal purposes, about 4,200 acres of JEPC are leased as cropland to farmers using conservation-oriented agricultural practices. Two man-made wetlands were constructed in 1999 as part of the road construction project. Since 1993, when the state began to manage the area, 1,200 acres of native grass, 820 acres of cool season grass, 180 acres of habitat strips, and 105 acres of trees have been planted in land that once was agriculture fields or pasture. An additional 670 acres have been idled and allowed to move towards forest through natural succession.

NATURAL HERITAGE

An outstanding example of the original loess hill prairies of central Illinois is JEPC's Cox Creek Hill Prairie Natural

Area. The 175-acre site encompasses remnants of scattered hill prairies composed of loess (windblown silt), which occur within forest openings on steep terrain where soils are droughty and well-drained. Among the plant species found on loess hill prairies are little bluestem, side-oats grama, fringed puccoon, wild petunia and prairie dock. Several rare Illinois plant species grow here. The small white lady's-slipper orchid has state-endangered status, while four other plants are listed as state-threatened species: savanna blazing star, pale false foxglove, large-seeded mercury and Hill's thistle.

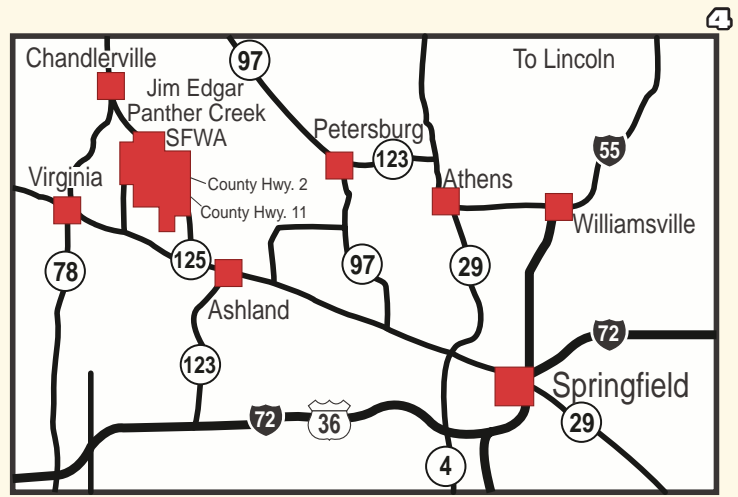
Surveys have identified 87 species of breeding birds here as well. Among the notable residents are eastern bluebird, orchard oriole and lark sparrow, plus 11 warbler species, five types of woodpecker and three species of owl. Loggerhead shrikes, a threatened species in Illinois, have been observed at the site, as have endangered northern harriers and red-shouldered hawks.

ACCESSIBILITY

Parking lots are oil and chipped, and there are accessible parking spaces at the office, check station, both campgrounds, group campgrounds, all three lakes, field trial barn and day use area. All parking spots are connected to concrete sidewalks. There is a wheelchair ramp at the park office. Motorized devices are only allowed with prior approval from park superintendent.

Boat ramps and fishing piers are available and located at Prairie Lake Day Use Area and Gridley Lake Day Use Area. Fishing piers are made of wood and can be slippery if wet or icy, and are approximately 100' from the parking lot. Prairie Lake is located one mile West of our main entrance on the South side of County Highway 11. Gridley Lake is located on Gridley Road, 4.5 miles South of the main office.

Restroom facilities are available throughout the park. The majority



TICK TIPS & SAFETY GUIDELINES



DEER TICK



LONE STAR TICK



BROWN DOG TICK



AMERICAN DOG TICK

PREVENTING TICKS

Wear light colored clothing so you can easily see ticks. Use bug repellent that contains 20% or more DEET, picaridin, or IR3535 on exposed skin. Walk in the center of the trails. Treat clothing with product containing permethrin (DO NOT APPLY TO SKIN).

CHECKING FOR TICKS

Always check your clothes, hair and body after being outdoors; Shower to wash any ticks off your body; Wash & dry clothes to remove ticks.

REMOVING TICKS

USE
TWEEZERS
TO REMOVE
A TICK FROM
YOUR SKIN.



If you find a tick attached to your skin, grasp it with tweezers as close to the skin as you can. Pull up on the tick with steady pressure. DO NOT SQUEEZE! Wash the bite area and your hands with soap and water. Dispose of the tick by sticking it to a piece of tape and placing in trash or by flushing it in the toilet.

Remove ticks as soon as possible. If a tick's mouthparts remain in the skin, leave them alone. In most cases, they will fall out in a few days. DON'T use nail polish, petroleum jelly, or shot match to make the tick detach. If you develop a fever or rash (usually shaped like a bull's-eye) within several weeks of removing a tick, see your doctor. Be sure to tell the doctor when the bite occurred, and where you most likely acquired the tick. For more info visit www.cdc.gov/ticks.

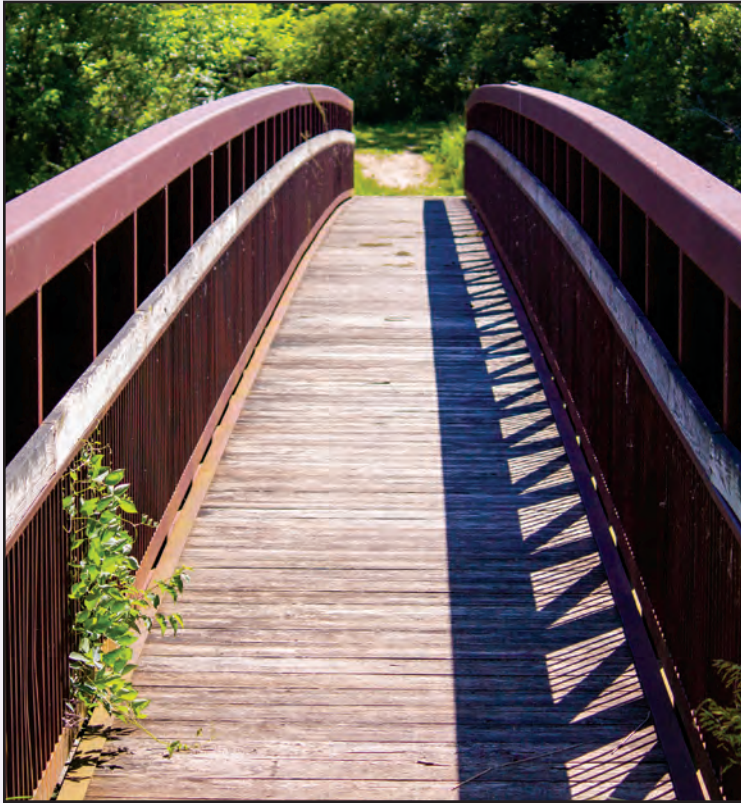
UNCOVER THE POSSIBILITIES

JACKSONVILLE

AREA CONVENTION & VISITORS BUREAU

WWW.JACKSONVILLEIL.ORG | 217.243.5678

SITE TRAILS

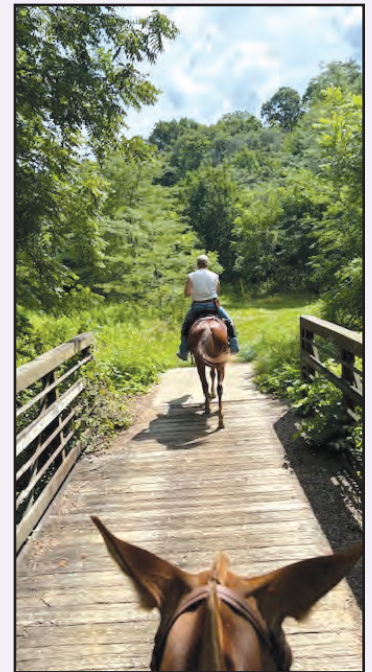


BIKING

JEPC offers a 17-mile off-road biking trail, as well as a 9-mile paved biking trail. The off-road biking trail is located around Prairie Lake. Trails are closed until 1:00 p.m. during all turkey seasons and closed sunrise to sunset during the 7-day deer firearm season. The rolling scenic trail traverses forests and grasslands and has many overlooks along the lake.

HORSEBACK RIDING

A 22-car/trailer parking lot, along with a 26-mile trail, are located in the northwest corner of JEPC on Questing Hills Road just off County Highway 2. The site has an equestrian campground at Questing Hills, with 51 electric sites. A south access to the equestrian trail is found at Q-4 parking lot situated between the 9-mile north loop trail and the southern 11- and 6- mile loops. The trails are open year round with the following exceptions; trails are closed until 1:00 p.m. during all turkey seasons, closed sunrise to sunset during the deer firearm seasons and closed on Tuesdays and Saturdays during the upland game season. Call the park office before arrival to check for weather related closures.



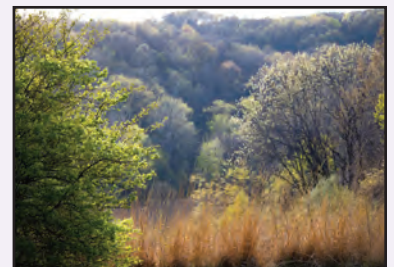
WEST OF WISE
WINERY

14096 State Highway 97, Petersburg, IL 62675
217-632-6003 | www.westofwise.com



HIKING

Off-trail hiking is available from parking areas positioned off public roads throughout the site. Because unmarked, open wells may exist in the area, caution must be used by individuals visiting JEPC. In addition to off-trail hiking, JEPC offers a 3-mile hiking trail around Gridley Lake and a 7-mile hiking trail around Drake Lake. A 17-mile hiking and mountain bike trail is around Prairie Lake. Twenty-six miles of equestrian trails in three loops are available to hikers and bikers with a reminder to yield to horseback riders. These trails have a lot of elevation changes.



JIM EDGAR PANTHER CREEK STATE PARK & WILDLIFE AREA

QUESTING HILLS EQUESTRIAN CAMPGROUND

CIRCLED SITES ARE NOT RESERVABLE (FIRST COME, FIRST SERVED SITES)

@ = DISABLED CAMPSITE
 # = 50 AMP SITE
 W = WATER HYDRANT
 D = TRASH DUMPSTER
 T = TOILET BUILDING



email: camphostjepc@hotmail.com

\$10. holiday premium charge on Memorial Day, July 4th, & Labor Day weekends

Reservations available only at CAMP.EXPLOREMOREIL.COM

1-866-716-6550

GPS LOCATION:
 400 02' 46" N 900 09' 51" W

STREET ADDRESS:
 24928 Questing Hills Rd.
 CHANDERVILLE, IL 62627
 Park Office (217) 452-7741

CAMPING & OUTDOOR FACILITIES



CAMPING

There are a variety of camping opportunities at JEPC. Prairie Lake Campground has 84 sites, 19 of which are full hookup sites with sewer drops and water. The other sites all have electricity.

The site also has an equestrian campground, Questing Hills, with 51 electric sites for equestrian camping only. Prairie Lake campground has 18 AA sites that have sewer drops and water hookups at the sites and an additional 64 class A sites. A shower building is available. Group campsites are also available with shelters.

CABINS

There are also nine cabins located in the campground. The cabins are located on the shore of Prairie Lake. The cabins have two rooms with the back room containing two bunk beds. The front room has a double bed, drop down table and a couple of

chairs. You must bring your own mattress and bedding (no cooking, pets or smoking inside the cabins). A concrete patio outside each cabin has a grill/fire pit and table. All cabins have electricity, ceiling fans, and a 1000-watt heater.

PRIMITIVE CAMPING AREA

These areas at Jim Edgar Panther Creek has seven three-sided shelters to camp near or in for a fee of \$6 per night. Campers must travel approximately a quarter mile from the nearest parking lot to access the shelters. Reservations for campsites, cabins, and picnic shelters may be made at Camp.exploremoreil.com or call 866-716-6550



PICNICKING

Sheltered picnic areas and restrooms are located at Prairie Lake (with fireplace), Gridley Lake, Drake Lake, Painter Pond, Geiss Pond, and the Prairie Lake day use area. Shelters can be reserved for a fee of \$50 or, if not reserved, they can be used on a first-come, first-serve basis. Groups of 20 or more must contact the office for a group use/activity permit. These areas may be reserved for a non-refundable fee through Camp.exploremoreil.com or call 866-716-6550.

DAY USE

The park has shelters in the following day use areas: Prairie Lake (with fireplace), Gridley Lake, Geiss Pond, Painter Pond, and Drake Lake. These areas may be reserved for a \$50 non-refundable fee through Camp.ExploreMoreil.com.

RANGES & PLAYGROUNDS

The Chuck Farmer Memorial Archery Range is conveniently located along Prairie Lake, with the shotgun range just down the road. Both ranges are open from dawn to dusk year round, except for during fire-arm deer season. The shotgun range is closed during IDNR Wingshooting Clinics, and is only for shotguns and targets. No slugs, rifles or pistols allowed, only shot shells. There is also a Playground area in Prairie Lake across from the Archery Range and a Soccer field with goals farther down the road.



SCHUYLER COUNTY SHOOTERS NFP

- Spring, Summer & Fall Trap Leagues
- Rushville Industry High School Trap Team Sponsor
- Conceal Carry Classes & Women Only Classes
- Monthly Club Trap Shoot open to the Public

Annual FNRA Fundraiser:
First Saturday in August Every Year

Please see our websites for more information:

www.schuylergunclub.com • www.facebook.com/schuylershooters

JIM EDGAR PANTHER CREEK STATE PARK & WILDLIFE AREA PRAIRIE LAKE CAMPGROUND

Full Hookup - \$25 or \$17.50 for Seniors/Disabled (Water, sewer, electric) all other sites are electric only.

Electric Only - \$20 or \$15 for Seniors/Disabled Disabled Veteran/AFP - \$10 any night, any site.

Cabin - \$45 or \$40 for Seniors/Disabled Disabled Veteran/AFP - \$35 any night.

Primitive - \$6 or \$0 for Seniors/Disabled Disabled Veteran/AFP - \$0 any night.

Seniors/Disabled
No Discount on Friday, Saturday, Sunday.



GPS LOCATION:
39° 59' 19" N 90° 04' 13" W

STREET ADDRESS:
10149 COUNTY HWY 11
CHANDERVILLE, IL 62627
Park Office (217) 452-7741

**CIRCLED SITES ARE NOT RESERVABLE
(FIRST COME, FIRST SERVED SITES)**

email: camphostjepc@hotmail.com
\$10. holiday premium charge on Memorial Day, July 4th, & Labor Day weekends
Reservations available only at CAMP.EXPLOREMOREIL.COM

1-866-716-6550



Map Compliments of CASSCOMM
"Keeping You Connected"

"WIFI" Available At Main Campsite Near Prairie Lake.

800-252-1799 • www.casscomm.com

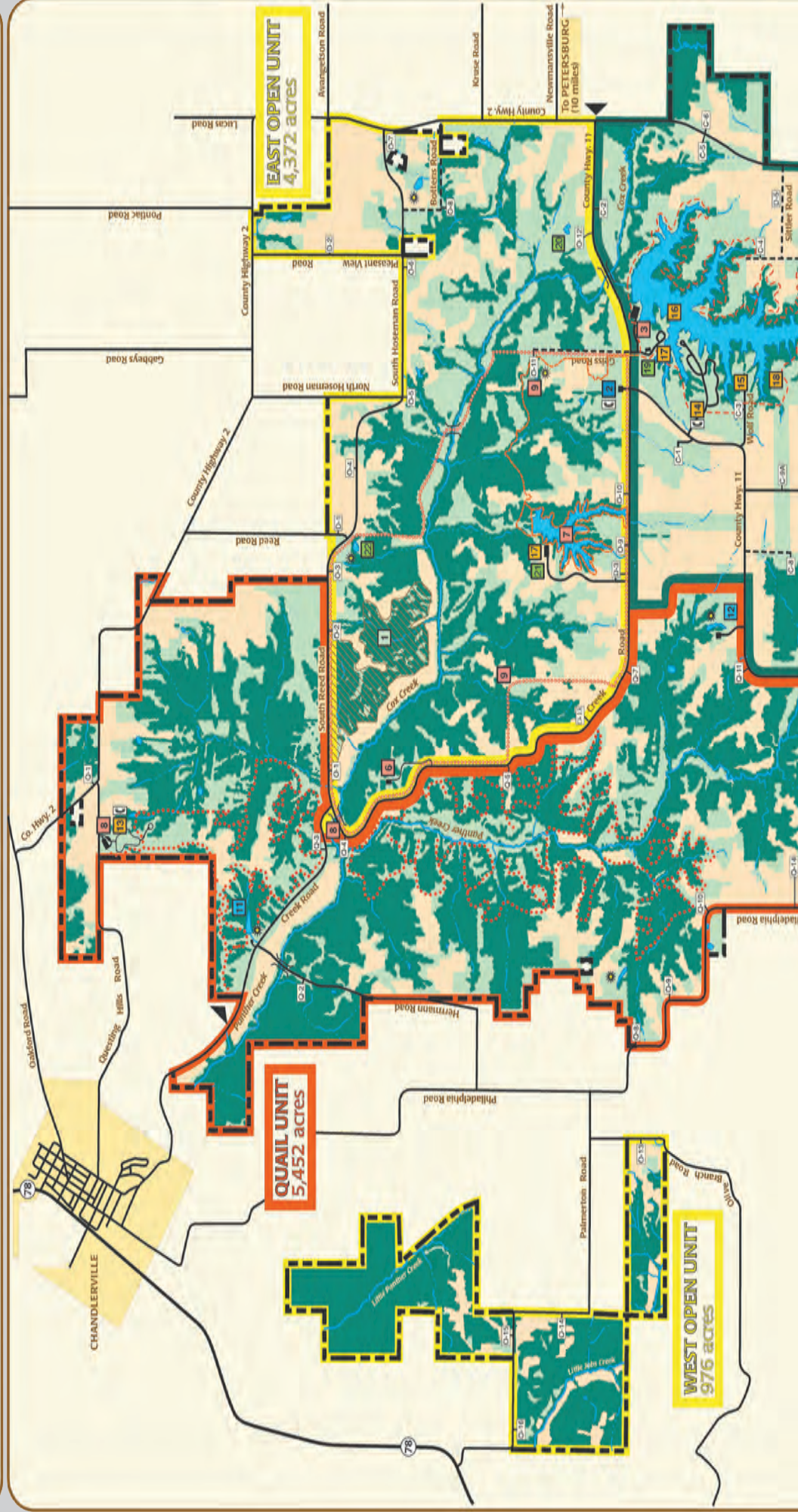


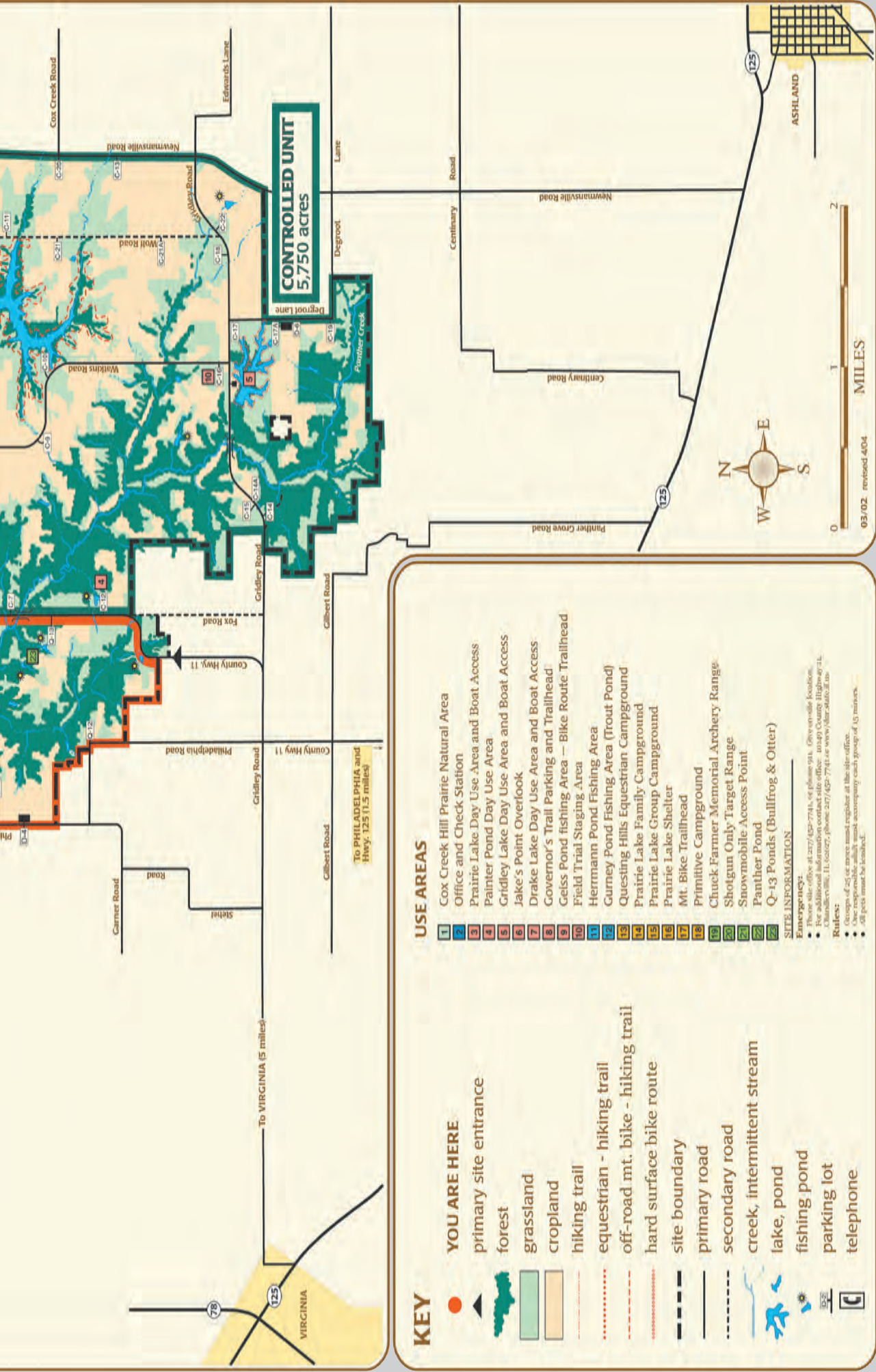
Find us
@CASSCOMM



JIM EDGAR PANTHER CREEK

STATE FISH AND WILDLIFE AREA



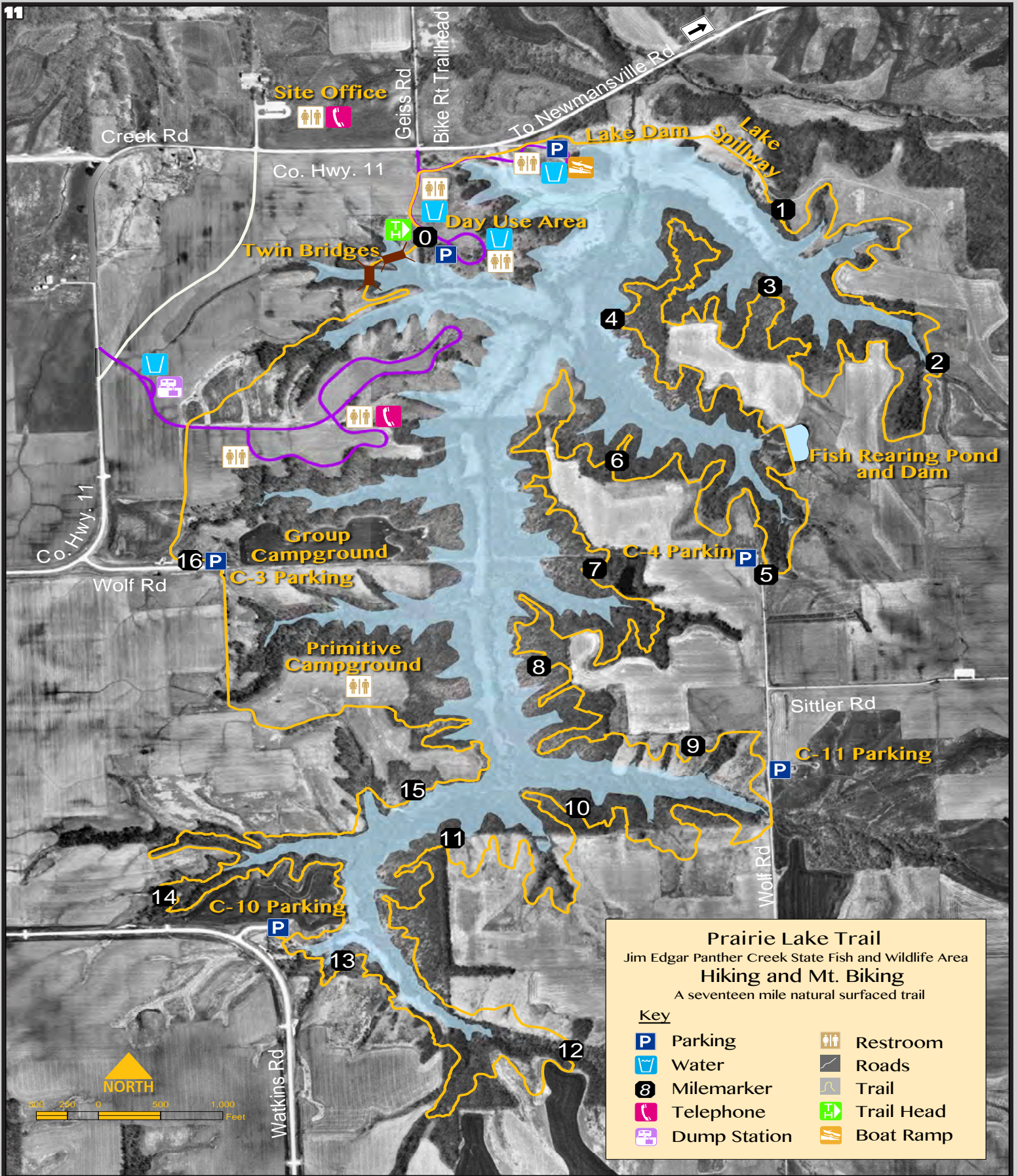


Whether at home or among the wilderness
of Jim Edgar Panther Creek

Internet • TV • Phone

CASSCOMM offers you outstanding service!





THE LAW OFFICE OF CARRIE MAGERL

114 E. Second Street, Beardstown, IL
(217) 323-3305
cmagerl@magerllaw.com





Jim Edgar Panther Creek State Fish & Wildlife Area Governor's Trail

TRAIL DESCRIPTION:

- Trail Length: 26.0 miles.
- Red: 9.0 miles.**
- Yellow: 11 miles.**
- Orange: 6 miles.**
- Difficulty: Moderate-Difficult.
- Scenic Overlooks: 14.

KEY:

- YOU ARE HERE
- forest
- grassland
- cropland
- Governor's Trail
- trail shortcut
- trail mile markers
- scenic overlook
- bike trail
- site boundary
- road
- contour line=20 ft interval
- creek
- intermittant stream
- pond
- toilet
- water
- shelter
- bridge
- low water crossing
- parking lot

SITE INFORMATION

Emergency:

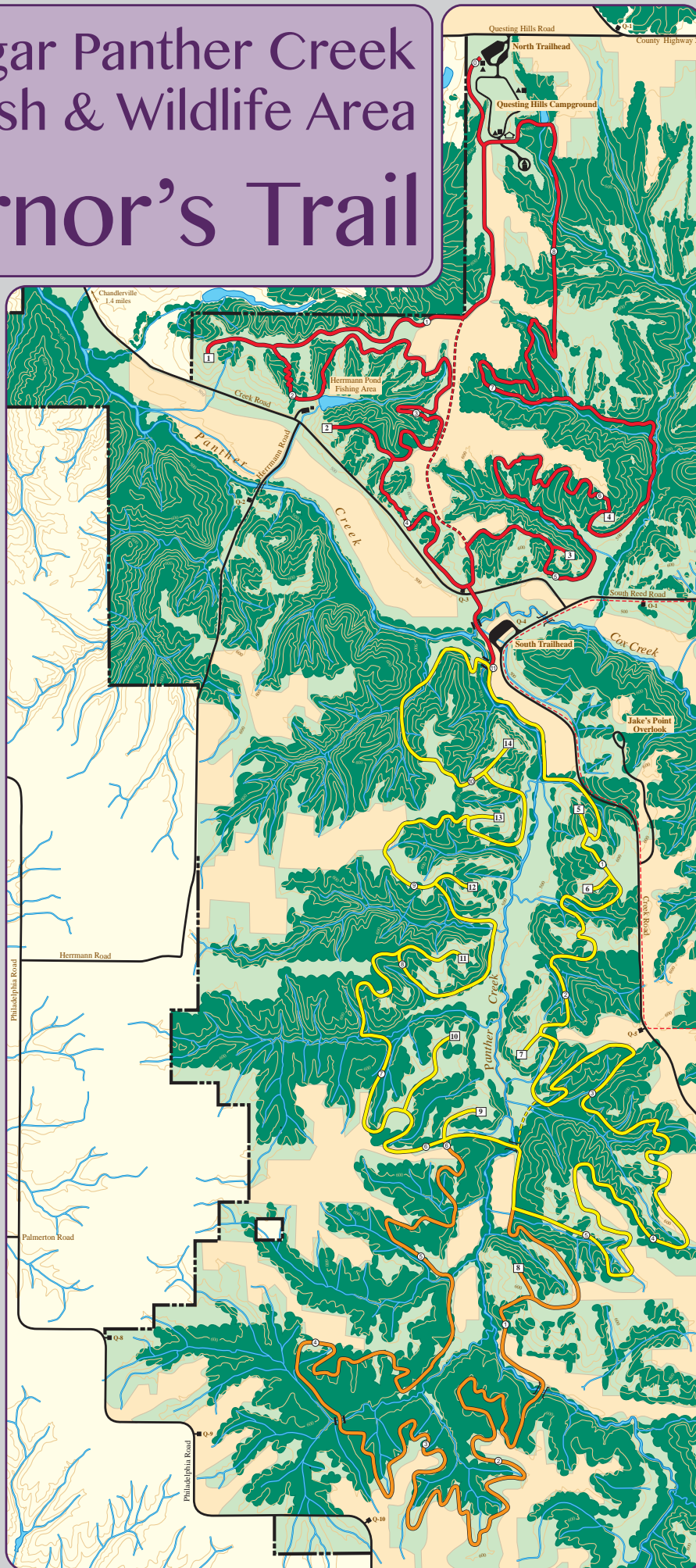
- Phone site office at 217/452-7741, or phone 911. Give on-site Location.
- For additional information contact site office: 10149 County Highway 11, Chandlerville, IL 62627, or phone 217/452-7741.

Rules:

- Groups of 25 or more must register at the site office.
- One responsible adult must accompany each group of 15 minors.
- All pets must be leashed.

Thank You:

- Thank you. We hope you enjoy your stay. Remember, take only memories, leave only footprints.



Building Community Engagement Through the Power of Local News.

CherryRoad Media Inc. is focused on using technology to strengthen communities through their local newspapers. We believe the newspaper is an essential resource for developing strong communities.

CherryRoad
media



info@CherryRoad.com • www.cherryroad.com



WATER ACCESS

FISHING, BOATING, CANOEING

Sport fishing opportunities are available at Gridley Lake (25 acres), Prairie Lake (210 acres) and Drake Lake (35 acres). Several ponds within the site also have been renovated. Fish include largemouth bass, bluegill and green sunfish. In addition, Prairie Lake is stocked with muskie. Trolling motors are limited to Gridley and Drake Lakes. Prairie Lake has unlimited horsepower with a no-wake zone for the entire lake. Sail boats are allowed on Prairie Lake. Canoes/kayaks are allowed at all 3 lakes. A new kayak launch has been added to the boat ramp at Prairie Lake.



KAYAKING DOS AND DON'TS

➤ DO choose the right boat. There are boats rated for kayak racing and those that are strictly for recreational purposes. Some boats are meant for calmer waters and others for waves and open seas.

➤ DON'T forget to check the weather forecast before heading out in the water. Storms can come up relatively quickly, and offshore winds can make it challenging to paddle back to shore.

➤ DO let someone know where you're going and how long you plan to be out on the water.

➤ DON'T touch or get too close to wildlife, as animals can be unpredictable and even dangerous.

➤ DO dress for the water temperature and not the weather outside. This helps ensure your health if you intentionally or accidentally enter the water.

➤ DON'T skip wearing a life jacket/buoyancy aid.

➤ DO expect to get wet, even if you do not fall in. Splash up will occur from paddles and some water will get in the boat regardless.

➤ DON'T forget to bring along some snacks and water.

➤ DO bring a fellow kayaker along. Whether you're a novice or a seasoned professional, bringing a friend along ensures someone can go for help if you're involved in an accident or suffer an injury.



True Value

We've got what you need!

217-323-3554
1351 Grand Ave.
Beardstown, IL

Great product selection
and equipment rental!

BeardstownHardware.com

LOOK FOR THE STAR-GAZETTE
AT THESE LOCATIONS

Chandlerville
Cass Foods Quick Stop

Ashland
Casey's

Virginia
Casey's
Dollar General
Fast Stop
Travel Store

Arenzville
Isaac's Coffee Shop

Beardstown
Andrew's Mart
Casey's
Conoco
Dollar General
Moreland & Devitt
Save A Lot
Star-Gazette Office
T-Mart
Tyson's Diner
Walmart

Rushville
Moreland & Devitt



CASS COUNTY 217-323-1010
STAR-GAZETTE
www.beardstownnewspapers.com



OPEN 7 DAYS A WEEK!

Live Bait • Tackle • Ice
Hunting & Camping Supplies
Convenience Store & More

CALL: 217- 634 - 4466

B&S Bait and Tackle

Owners: Roy & Carolyn Burton
 1 1/4 mile east of Main Entrance to Jim Edgar Panther Creek
 on the Newsmansville Blacktop

HUNTING GROUNDS

HUNTING RULES

The Sportsman's Digest is provided to ensure that regulations governing the use of our wildlife resources are available and understood. In addition, it is useful in acquainting visitors with common species and habitats in this area. Please check the specific regulations for species and program information.

TREE STAND GUIDELINES

Only one tree stand or ground blind is allowed per deer permit holder.

Tree stands and ground blinds can be left unattended September 15 - January 31 otherwise all tree stands and ground blinds must be removed at the end of each day.

All tree stands and ground blinds must be legibly marked with the owner's name, address and phone number, or site assigned identification number.

HUNTING GENERAL

JEPC offers a wide variety of hunting programs, all requiring a site windshield card, while some require additional permits and/or fees and some with restricted areas. Please check the specific regulation for species and programs. At JEPC, sportsmen have an opportunity to hunt squirrel, dove, pheasant, rabbit, quail, woodcock, snipe, coyote, raccoon, opossum, striped skunk, red fox, gray fox, wild turkey, and deer as described. Site issued hunting permits are available online at dnr.illinois.gov; go to hunting Jim Edgar Panther Creek. Each hunter is required to have a free windshield card. Non-toxic shot shells are required of hunters.

Water Fowl Program is a limited program that will be offered Saturdays and Wednesdays, Nov. 2, 2024 – Jan. 15, 2025.

Squirrel Hunting is by statewide season and hours. The use of either shotgun, .17 and .22 rimfire firearms, or muzzle-loading rifles is allowed. Hunters are required to obtain a free windshield card online. The Quail Management Unit is closed to squirrel hunting beginning Nov. 2 until the



end of the rabbit season. The Control Pheasant Unit is open to rabbit hunting only after the CPHP ends without a special permit. Please check reporting requirements for the site permit.

Dove Hunting is Sept. 1-5, 2024. The number of dove hunters is restricted. The first five days' permits are issued from Springfield by completing a Dove Hunting application online. Permit holders are required to check in by 10 a.m. the day of the hunt. Dove fields will be allocated by a daily drawing. Any remaining open spots will be filled by a daily lottery at 11 a.m. to fill the daily hunter quota. Hunting hours are from noon to 5 p.m. for days 1-5. All hunters are required to wear a back patch provided at the time of check-in, and may hunt only the dove field assigned.

Shooting must occur within 10 feet of a stake in the field. All hunters must check out after each day's hunt. Beginning Sept. 6, 2024 through the end of the statewide season and hours, hunters are required to obtain a free windshield card online before hunting. While hunting in the sunflower

fields, hunting is restricted to the field borders. Non-toxic shot size is restricted for all dove hunting to six steel or a ballistic equivalent size or smaller. From Nov. 2 until the end of the dove season the Quail Management Unit and the Controlled Hunting Management Units are closed to dove hunting, with the exception that hunters with "special permits" can harvest doves in season. Please check reporting requirements for site-issued permit.

Upland Game Hunting: Hunt-able species are pheasant, rabbit, quail, and woodcock. JEPC has been divided into four management units for the hunting of upland game. These units are the **West Open Unit, Quail Management Unit, Control Management Unit, and the East Open Hunting Unit**. The regulations for each unit are different and hunters must comply with specific unit regulations and be aware of the unit boundaries to ensure compliance with site regulations. All upland game hunters are required to wear a Blaze Orange or Solid Blaze Pink Hat and Vest while hunting in all four management units. **The Quail**

Management Unit is managed to optimize local population of quail, pheasant, and rabbit. To accomplish this goal it is important to reduce the hunting pressure on these local populations to avoid over-harvesting or pushing the game from habitat. Hunter quotas are limited to five parties of four (20 hunters total) each open hunting day. To regulate the number of hunters permitted to hunt in the unit, a special permit must be obtained. This permit may be obtained by completing a free Upland Game Hunters permit application. Permits will be issued for every Tuesday and Saturday in November, December and January. Applicants may only submit one application per season. Hunters may apply until Aug. 30. A drawing will be held soon thereafter to issue permits. **The Controlled Hunting Unit** season dates are Nov. 2, 2024 through Jan. 15, 2025. The Controlled Program is closed on Mondays, Tuesdays and Christmas Day. The program is not offered on Nov. 22-24,

2024, and Dec. 5-8, 2024. A daily fee of \$34 for resident and \$39 for non-resident is charged for hunting in the controlled unit. Pheasants are released daily (Wednesday-Sunday) throughout the season to supplement wild populations. Reservations must be made to participate in the controlled pheasant area. The Department will begin accepting controlled pheasant hunt applications on Aug. 5 via the internet. Go to DNR.illinois.gov and click on the hunting icon. Then look for pheasant hunting application forms. There will be a drawing for standby hunters at 8:45 a.m. to fill the hunter quota for the day. All hunters will be issued a controlled area back patch which must be worn while hunting. All hunters must remain in their designated field until 10 a.m. There will be one Youth Pheasant Hunt day Nov. 2, 2024. See Hunter Fact Sheet for details. Each youth participates with a supervising adult (there is no fee for this date). All youth need to be between the ages of 10 and

15 and must have completed the Hunter Safety Course. **The West Open and the East Open Hunting units** will follow state-wide seasons and hours for upland hunting. Hunters are required to obtain a free Windshield Card on the IDNR website: www.dnr.state.il.us/lands/landmgt/programs/windshield-card/ before hunting. Hunting is allowed only in the area designated on the map as Open Unit. Please check reporting requirements for site issued permit.

Deer Archery Hunting: All state-wide seasons and hours will be enforced. Hunters are required to obtain a free Windshield card online at the IDNR website: www.dnr.state.il.us/lands/landmgt/programs/windshield-card/ before hunting. Archery hunting is allowed in all four management units, except during Youth Firearm Deer season (Oct. 12-14, 2024) both Open units are closed to Archery hunting. Please check reporting requirements for site issued permit. Non-resident-archery deer hunters will be limited during portions of the 2024-2025 season at JEPC. IDNR will permit a limited number of non-resident archery hunters to hunt at JEPC during the following periods:

First season: Oct. 25 - 31, 2024

Second season: Nov. 1 - 7, 2024

Third season: Nov. 8 - 14, 2024

Fourth season: Nov. 15 - 21, 2024

Deer Firearm Hunting: All state-wide seasons and hours will be enforced. JEPC is designated as a Special Hunt Area on the deer firearm permit application form and a JEPC permit (issued from IDNR/Springfield) is required to hunt. Hunting is allowed in all four management units. Hunters receiving a JEPC Special Hunter Permit will be sent a Site Permit. Hunters



CASS COUNTY STAR-GAZETTE

210 A Washington Street, Beardstown, IL

217-323-1010

www.beardstownnewspapers.com

YOUR SOURCE FOR LOCAL NEWS!



must also go online and get a windshield card.

First season: Nov. 22-24, 2024.

Second season: Dec. 5-8, 2024.

Youth Firearm Deer Hunting: JEPC offers a limited youth firearm lottery season for Deer Oct. 7, 8, 9, 2024. For a chance at a permit you must submit a postcard to the site office with the youth's name, address, date of birth, phone number and customer ID number.

Muzzle Loader Deer: Allowed only in the two Open Units with a JEPC muzzle loader permit Dec. 13-15, 2024. Archery hunters are also allowed at this time. All hunters must wear blaze orange/blaze pink.

Wild Turkey Hunting - Spring Shotgun: JEPC is designated as a Special Hunt Area on the Spring Wild Turkey Application form and a JEPC permit (issued from IDNR/Springfield) is required to hunt. State-wide seasons and hours will apply. Hunting is allowed in all four management units. Hunters receiving a JEPC Special Hunt permit will be sent a Site Permit. Participants must go online to get a wind-shield card. Mushroom hunting will be allowed after 1 p.m.

Wild Turkey Hunting - Fall Shotgun: JEPC is designated as a Special Hunt Area on the Fall Wild Turkey application form and a JEPC permit (issued from IDNR/Springfield) is required to hunt in all units. Hunters receiving a JEPC Special Hunt Permit must go online and get a windshield card. Please check the reporting requirements for the site issued permit.

Wild Turkey Hunting - Fall Archery: Hunters are

required to obtain a free windshield card online at www.dnr.state.il.us/lands/landmgt/programs/windshieldcard/ in addition to the Fall Archery Permit. State-wide season and hours apply. Hunting is allowed in all four management units. Please check reporting requirements for site issued permit.

Furbearer Hunting: Hunttable species are raccoon, opossum, striped skunk, red fox, and coyote by statewide seasons and hours. Hunters are required to obtain a free windshield card online before hunting. The use of .17 and .22 rimfire firearms is permitted from sunset to sunrise only during fox and raccoon season. Hunting is allowed in all four management units. Coyotes can only be hunted with dogs from Jan. 16 to April 1. Please check reporting requirements for site-issued Windshield card. Furbearer trapping is allowed by special permit. The trapping drawing is held in October. Six trapper permits are drawn per year.

Reporting Requirements for Site Issued Windshield Card: Windshield cards must be displayed in the windshield of vehicle while hunting. Also, the hunter must cut the bottom portion of the windshield card and carry on their person while afield. All hunters are required to record hunting and harvest data on the back side of the free site Windshield card as well as online. Failure to report the site windshield card will result in forfeiture of next season's hunting rights at JEPC.

Window permits may be obtained at: www.dnr.state.il.us/lands/landmgt/programs/windshieldcard/.

CASS COUNTY

Full Services in a Small-Town and Rural Environment

- ⦿ **Progressive Local Education Opportunities**
- ⦿ **Extensive Support and Services for Senior Citizens**
- ⦿ **Highly Rated Municipal and Rural Fire Protection**
- ⦿ **County-Wide Ambulance and Paramedic Coverage**
- ⦿ **Full Range of Social and Community Services**

***We have one of Illinois' lowest crime rates.
We welcome new residents, and we're a great place to start a business***

Sponsored by the Cass County Board Members:

Bill Merriman, Board Chairman; Bob Schultz, Eric Snellgrove, Amanda Ruppel, Gary Noe, Connie Starkey, Cass Wessel, Ramona Douglass, Kimberly Hance, Aaron French and Cathy Gibson.

Overall Economic Development Program Coordinator: Dustin Fritsche

County Clerk: Shelly Wessel

Treasurer: Travis Cox

Circuit Clerk: Brad Parlier

Sheriff: Devron Ohrn

States' Attorney: Craig Miller

HUNTER'S SAFETY PROTOCOLS

Millions of Hunters take to forests and fields every year. Seasoned hunters and novices alike can benefit from revisiting some safety procedures before their first outing this season.

Weather should be a consideration whenever people spend a significant amount of time outdoors. Hunters typically leave before dawn and arrive home after dusk. Hypothermia is a very real risk for hunters who may be out in snow or wet conditions. It's possible to get hypothermia by overdressing as well. Sweating and then being exposed to dropping temperatures puts people at risk for hypothermia. Hunters should dress in layers with moisture-wicking materials and a water-repellant outer layer. In addition, check the weather forecast before heading out as a last second precautionary measure.

Firearm Safety is a critical component of safe hunting. Hunters use rifles, shotguns and other firearms. Each gun is different, so hunters need to familiarize themselves with new firearms before using them. The following are some additional firearm safety tips, courtesy of State Farm Insurance and Southern Land Exchange.

- ☞ Always treat a firearm as if it is loaded.
- ☞ Keep your finger off the trigger until ready to shoot.
- ☞ Only point at what you plan to shoot.
- ☞ Clearly identify your target and what is beyond it.
- ☞ Fire within the zone-of-fire, which is the 45-degree area directly in front of each hunter.
- ☞ Firearm chambers should be emptied when guns are not in use.
- ☞ Use appropriate ammunition.



- ☞ Never modify or alter the gun.
- ☞ Never cross a fence, jump a ditch or climb a tree with a loaded gun.
- ☞ Never rely on a gun's safety.

Additional Safety Tips Hunters should always let others know where they will be when leaving in the morning. If something should happen, people back home can alert authorities if something goes awry. Always check equipment and maintain it properly. Equipment should include gear colored in hunter's orange. That extends to dogs if they are accompanying hunters on a trip. This makes hunters more visible to other hunters. Also, carry a first aid kit, a charged mobile phone or a satellite phone to maintain contact with others in case of emergencies.

RiverBank Lodge
PETERSBURG

217-632-0202 • www.riverbanklodge.com

24 Unique Rooms Catering to the Outdoorsman!

Follow us at www.Facebook.com/RiverbankLodgePetersburg/

24-hr Front desk service, onsite lounge/bar, private gaming area, free breakfast.

Ask about our Hunters Discount for long term stays. \$80-\$165 per night.

10 minutes east to Petersburg from Jim Edgar Panther Creek State Site



Beardstown

welcomes you to our shops and businesses

Restaurants

Benny's Pizza

102 West 15th Street
217-323-5222

Dairy Queen

817 East 4th Street
217-323-1843

El Pueblito

112 East 2nd Street
217-909-4538

La Cantrina Paletria

302 E 4th Street
217-909-4889

Little Mexico

405 E 4th Street
217-909-4497

McDonald's

#1 Plaza Drive
217-323-5955

The Star Café

9986 US 67
217-323-9777

Tyson's Diner

701 East 4th Street
217-323-1964

Bars

Mainstreet Tap

119 West Main Street
217-909-4669

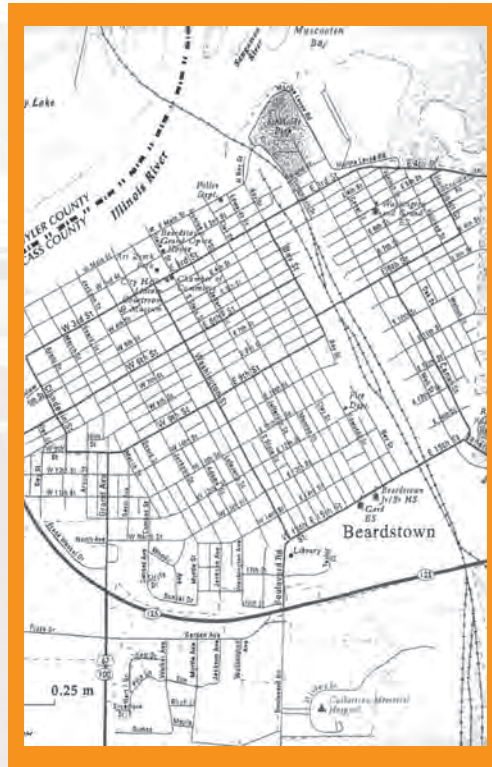
The Nook

111 East 2nd Street
217-323-9986

Convenience/Gas

Andrew's Mart

1705 Grand Avenue
217-323-1800



Retail

4 All Seasons

801 ½ Grand Avenue
217-323-5125

Antique Treasures, Simple Pleasures

119 State Street

Beardstown

Antique Mall

2104 Wall Street
217-323-4569

Amy's Salon

on 2nd Street

110 West 2nd Street
309-267-7617

The Shoppe

209 State Street
217-323-2534

The 220 Salon and Boutique

220 Washington Street
217-323-4505

Pharmacy

Moreland and Devitt Pharmacy

201 South State Street
217-909-4333

Retail Hardware

Beard Implement

216 W Fredrick Street, Arenzville
(217) 997-5514

S & R Marine & Equipment

815 East 15th Street
217-323-2730

True Value Hardware

1351 Grand Ave
217-323-3554

Vredenburg Lumber

814 East 4th Street
217-323-2207

Retail Grocery

Save A Lot

412 East 4th Street
217-323-2717

Walmart

100 Lincoln Avenue
217-323-1340

Real Estate

Buffy Tillitt

10060 US-67
217-323-2100

DeSollar Agency, Inc.

111 W Main Street
217-323-2623

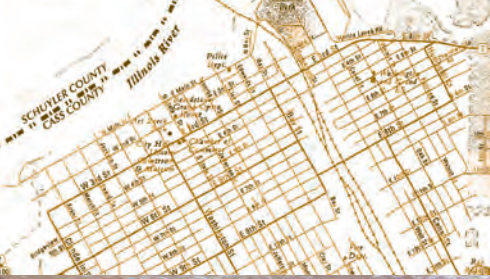
For information, please contact:
Katie Vitale

Beardstown Chamber of Commerce

101 West 3rd Street, Beardstown, IL 62618

217-323-3271 • 217-440-8774 (cell)

www.beardstownil.org • info@beardstownil.org
btwnms2008@gmail.com



Welcome to the City of Beardstown

Home of the Lincoln Courtroom

Site of the famous Almanac Trial



List of Events for 2024-2025

Family Friday Fun Nights in Art Zeeck Park

Sept. 13th, 2024. May 9th, Jun. 13th, Jul. 11th, Aug. 8th, Sept. 12th, Oct. 10th, 2025. (6-8 pm)

First Friday Sounds on the Square

Sept. 6th, 2024. May 2nd, Jun. 6th, Aug. 1st, Sept. 5th, Oct. 3rd, 2025. (5-7 pm)

Beardstown Fall Fun Festival

Sept. 27th-29th, 2024

Night Time Christmas Parade

Nov. 30th, 2024

Beardstown Christkindle Market

December 2024: Every Fri. 4-7 pm & Sat. 9 am - 2pm

New Year's Eve Ball

Dec. 31st, 2024

River Rat Golf Classic

Feb. 22nd, 2025

Alumni Weekend

May 23rd-25th, 2025

Beardstown High School Graduation

May 25th, 2025

Brown Bag Lunch in Art Zeeck Park

Jun. 4th, 11th, 18th, 25th, 2025

4th of July Celebration at Roy Roberts Park

Jul. 4th, 2025

Color Dash 5k Run

Date TBD

First Friday Shop Crawls

first Friday of each month from 6-8 pm



Old Lincoln Courtroom & Museum

101 W. 3rd Street, Beardstown

Apr. to Nov. Mon, Wed & Fri: 1-4 pm;
Sat: 10 am - 4 pm or by appointment by
calling 217.248.6053 or 217.323.3225.
www.lincolinbeardstown.org

City Hall

105 W. 3rd St.
217.323.3110

www.cityofbeardstown.org

Less than 23 miles from Jim Edgar Panther Creek Park • Watermelon Capitol of the U.S.!

**For information on hotels, restaurants and services
call 217.323.3271 or go to www.beardstownil.org**

Tim Harris, Mayor • Brian "Petie" Ruch, City Clerk • Karen Whitlow, Treasurer
Alderpersons: Chris Baer, Lisa Buhlig, Ron Culves, Mary Davis,
Eric Harbin, Keith Schramm, Dawn Seward, Shawn Taylor