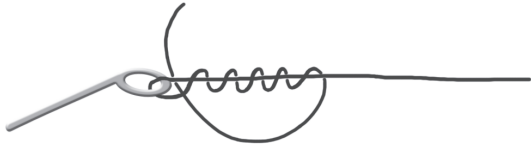


# Improved Clinch Knot:

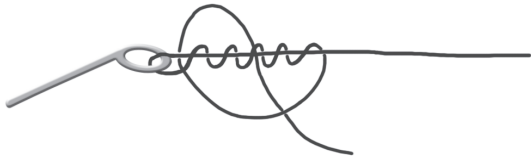
an old standby



Insert the tag end through the eye, leaving at least 6 inches of line. Wrap the tag end around the standing line, making six turns with light (2-6 lb.), five turns with medium (8-12 lb.) or four turns with heavy (14-20 lb.) line.



Pass the tag end through the loop formed at the eye.



Insert the tag end back through the second loop formed in Step 2.



Maintain tension on the tag end and draw the knot tight by pulling on the standing line. Trim the tag end.

## Take Family and Friends Fishing!

Fishing with family members and friends makes twice the fishing fun while also making for a safer trip.



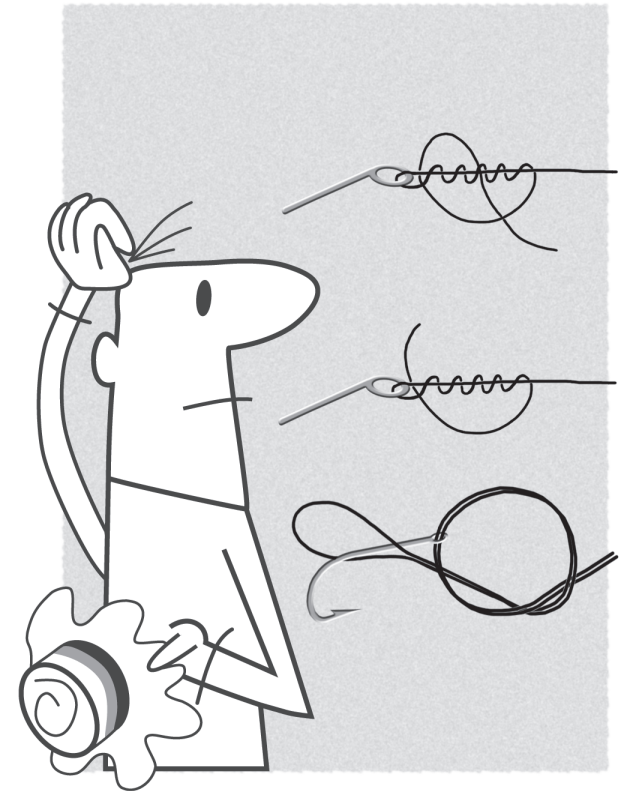
Equal opportunity to participate in programs of the Illinois Department of Natural Resources (IDNR) and those funded by the U.S. Fish and Wildlife Service and other agencies is available to all individuals regardless of race, sex, national origin, disability, age, religion or other non-merit factors. If you believe you have been discriminated against, contact the funding sources civil rights office and/or the Equal Employment Opportunity Officer, IDNR, One Natural Resources Way, Springfield, IL 62702-1271; 217/785-0067; TTY 217/782-9175.

Printed by the Authority of the State of Illinois  
DNR 23 - 2M-07/14 • IOCI 15-0283



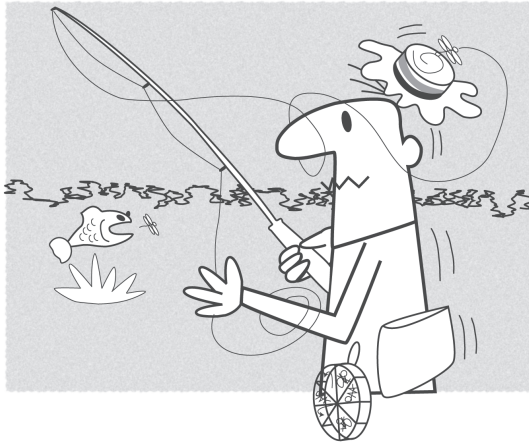
State of Illinois  
Illinois Department of Natural Resources

# Knot-Tying Guide



Illinois  
Department of  
**Natural  
Resources**





**You've made the decision to go fishing, now you need to prepare for the trip by packing the right tackle for the type of fishing you anticipate. First, make sure the rod and reel have a balanced feel in your hand to ensure you can cast the lure far and have maximum line sensitivity to feel a fish bite. Then, make sure that the line and lure weights you have are rated for your intended use.**

Once you have the proper combination of rod, reel and line, it is vital that you secure your hook, swivel or lure with a strong, secure knot capable of withstanding the shock of a fish strike.

Remember—the knot you tie is the weakest point in your line. A good knot will retain more than 90 percent of the line strength. Improper knots have less than half of the line strength. The following are common knots used by anglers.

## Trilene Knot:

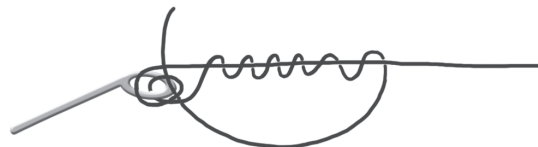
**a highly recommended and very strong knot**



Insert the tag end through the eye. Reinsert the tag end back through eye, forming a double loop. Make sure not to cross or overlap the double strands through the eye.



Wrap the tag end around the standing line, making six turns with light (2-6 lb.), five turns with medium (8-12 lb.) or four turns with heavy (14-20 lb.) line.



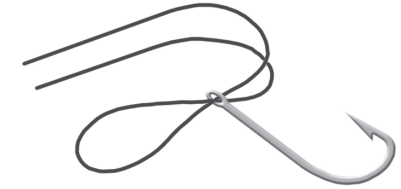
Pass the tag end through double loop at the eye formed in Step 1.



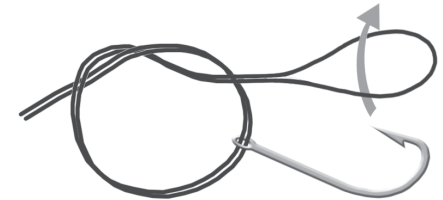
Maintain tension on the tag end. Draw the knot tight by pulling on the standing line. Trim the tag end.

## Palomar Knot:

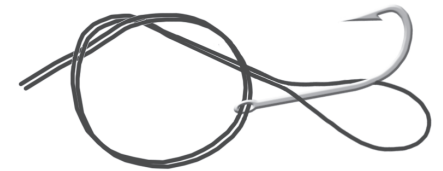
**maximum strength and versatility**



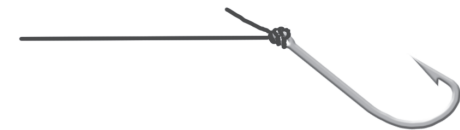
To tie the Palomar knot, bend the line back on itself to form a double strand 6 inches long.



Pass this double strand through the hook eye and tie a loose, overhand knot, leaving a loop deep enough for the hook (or lure) to pass through it.



Pass the hook or lure through the loop.



Tighten the knot by pulling on the hook with one hand and the double strand of line with the other. Trim the tag end.

