

**Facilities** Several large picnic areas are located throughout the park's interior. Each area includes a shelter with electricity, picnic tables, charcoal grills, playground equipment, water hydrants and toilet facilities. Winter picnicking is permitted, although some areas are closed. **Camping.** Campground facilities, open from April 15 to

Over 160 species of birds are present, and wild turkeys, stocked in 1988, call Jubilee home. Jubilee Creek is a tributary to Kickapoo Creek and passes through the park from northwest to southeast. It is characterized by deep pools and fast riffles. The average width is 40 feet and average depth is four inches. Fish species of interest to anglers include smallmouth bass, bluegill and catfish. Non-game fish include several species of darters and a variety of minnow species. Swimming is prohibited in the creek.

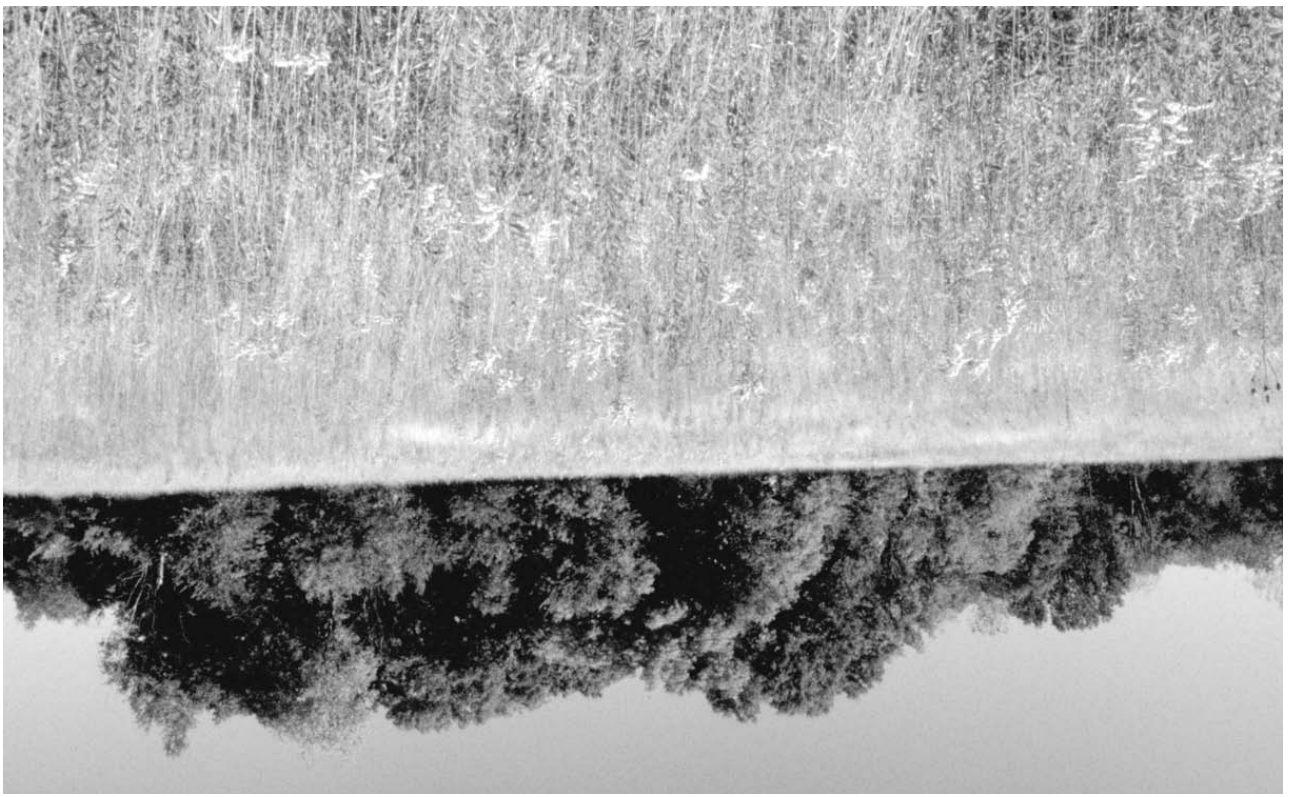


Nov. 1, accommodate recreational vehicles or tents and include a shower building with flush toilets, a trailer dump station, gravel pads, grills, water hydrants and primitive toilets. Camp sites are Class A and Class B with showers. Groups are welcome. Permits are required and can be obtained from campground hosts or site staff. Reservations are not accepted.

**Winter Camping.** In the main camping area, Coyote Cove loop is open with Class B sites with electric, and primitive privies. No running water is available.

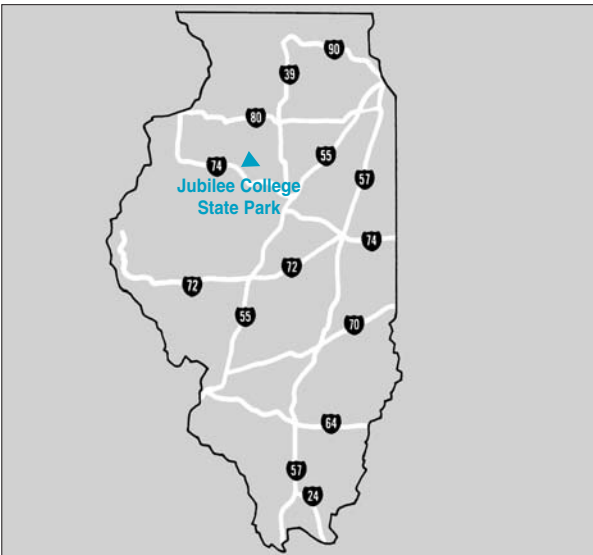
**Equestrian Facilities.** An equestrian camping area is located at the north end of the park. Forty-five miles of multi-use trails are available. Horse rentals are not available. The area includes drinking water, toilet facilities, a shelter house, picnic tables and grills. Camp sites are Class B/S. Overnight campers must self register at the self pay station located in the equestrian campground. Trail users should call the park office for current trail conditions. Trails may be temporarily closed under certain weather conditions.

**Hiking.** Forty-five miles of multi-use trails are open year-round. Please carry out everything that was carried in. Equestrian and cross-country ski trails are also used for hiking. Please call site office for trail conditions.



**Natural Features** Jubilee, situated in the Illinoisan drift-plain, and is deeply eroded into many complex valley systems, from near-level ridge tops and floodplains to steep slope ravines. Bedrock exposures are numerous and include shale, sandstone, limestone and coal. The highest elevation is 660 feet. The topography and Jubilee Creek constitute an aesthetically pleasing environment for outdoor recreation activities and provide habitat for numerous wildlife and fish species. Visitors may see deer, rabbits, squirrel, fox, coyote and raccoon throughout the forests, while the creek may offer glimpses of mink, river otter, muskrat and beaver.

The park continues to flourish with the campground, day-use facilities, and an entrance road and interior roads that link the park and the college area. Jubilee, situated in the Illinoisan drift-plain, and is deeply eroded into many complex valley systems, from near-level ridge tops and floodplains to steep slope ravines. Bedrock exposures are numerous and include shale, sandstone, limestone and coal. The highest elevation is 660 feet. The topography and Jubilee Creek constitute an aesthetically pleasing environment for outdoor recreation activities and provide habitat for numerous wildlife and fish species. Visitors may see deer, rabbits, squirrel, fox, coyote and raccoon throughout the forests, while the creek may offer glimpses of mink, river otter, muskrat and beaver.



**Jubilee College**  
13921 W. Route 150  
Brimfield, IL 61517, 309-446-3758

- While groups of 25 or more are welcome and encouraged to use the park's facilities, they are required to register in advance with the site office to avoid crowding or scheduling conflicts.
- At least one responsible adult must accompany each group of 15 minors.
- Pets must be kept on leashes at all times.
- Actions by nature can result in closed roads and other facilities.
- Please call ahead to the park office before you make your trip.
- We hope you enjoy your stay. Remember, take only memories, leave only footprints.
- For more information on state parks, write to the Illinois Department of Natural Resources, Office of Public Services, One Natural Resources Way, Springfield, IL 62702, call (217) 782-7454 or visit its website at <http://dnr.state.il.us>.
- For more information on tourism in Illinois, call the Illinois Department of Commerce and Economic Opportunity Bureau of Tourism at 1-800-2CONNECT.
- Deaf and hearing-impaired individuals may call the Department of Natural Resources' TTY number, (217) 782-9175, or use the Ameritech Relay Number, 1-800-526-0844.

Equal opportunity to participate in programs of the Illinois Department of Natural Resources (IDNR) and those funded by the U.S. Fish and Wildlife Service and other agencies is available to all individuals regardless of race, sex, national origin, disability, age, religion, or other non-merit factors. If you believe you have been discriminated against, contact the funding source's civil rights office and/or the Equal Employment Opportunity Officer, IDNR, One Natural Resources Way, Springfield, IL 62702; 217/785-0067, TTY 217/782-9175

Printed by authority of the State of Illinois  
(3400467—10M—6-06)

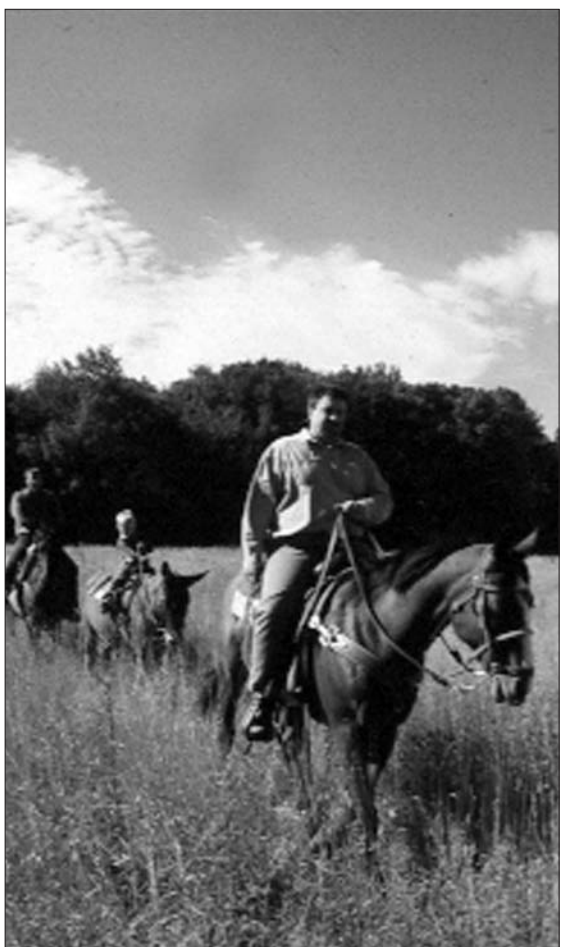
AS GRAPHICS  
IISG817

**Jubilee College State Park** is a 3,200-acre facility located in Peoria County between the towns of Kickapoo and Brimfield, just off U.S. Route 150. This scenic area, with its rolling topography and meandering Jubilee Creek, offers various outdoor recreational opportunities. Named Jubilee College by its founder, Episcopal Bishop Philander Chase, in 1839, in expression of his thankfulness and joy, the college was one of the earliest educational enterprises in Illinois. Through a series of misfortunes climaxed by the bishop's death, the college closed in 1862. In 1933, the college and grounds, consisting of 93 acres, were presented to the State of Illinois. Since that time the Department of Natural Resources increased the acreage to 3,200. The college building, placed on the National Register of Historic Places in 1972, has been restored to its original


State of Illinois  
Rod R. Blagojevich, Governor  
Illinois Department of Natural Resources



**Jubilee College**  
STATE PARK



JUBILEE COLLEGE STATE PARK



**Illinois**  
Department of  
Natural Resources



**Mountain Biking.** All trails are available for mountain biking. Pedestrians, skiers and horses have the right-of-way. Please help keep our trails in good shape: avoid riding when they are *extremely muddy and wet*.



**Fishing.** Limited fishing is available in Jubilee Creek and in two ponds, one of which is stocked yearly. Vehicular access is not available.

**Winter Sports.** The rolling terrain provides an excellent opportunity for sledding and cross-country skiing when the snowfall is sufficient. Snowmobiling is permitted on marked portions of multi-use trails during the daylight hours, when there is a four-inch snow base.

**Hunting.** Approximately 2900 acres are available for hunting. Hunters are required to register at the check station. Deer and turkey hunting is bow and arrow only, although shotguns can be used for other game. Contact the park office for information on species, hunting times and dates.

Please help preserve our natural heritage for all to enjoy. Put all litter in the nearest trash receptacle. All pets must be on a 10-foot-or-less leash. Jubilee is a place for the co-existence of nature and recreation.

For more information about this site, contact the Site Superintendent, Jubilee College State Park, 13921 W. Route 150, Brimfield, IL 61517, or phone (309) 446-3758.

**If the outdoors in Illinois is where you want to be—**



Subscribe to *OutdoorIllinois* magazine. A publication of the Department of Natural Resources, it's the perfect source of information for outdoor enthusiasts who fish, hunt, bird-watch, camp, boat, hike, ski, bike, or simply enjoy being outdoors. From stories about state park sites to season dates and features

on a variety of outdoor activities, *OutdoorIllinois* has it all!

Receive 12 issues for only \$10, plus a free, full-color wall calendar in the December issue. Call toll-free in Illinois, 1-800-720-3249. Outside Illinois, call (217) 782-1687. TTY (217) 782-9175. Or send a \$10 check or money order to *OutdoorIllinois*, 524 South Second St., Springfield, Ill. 62701.

