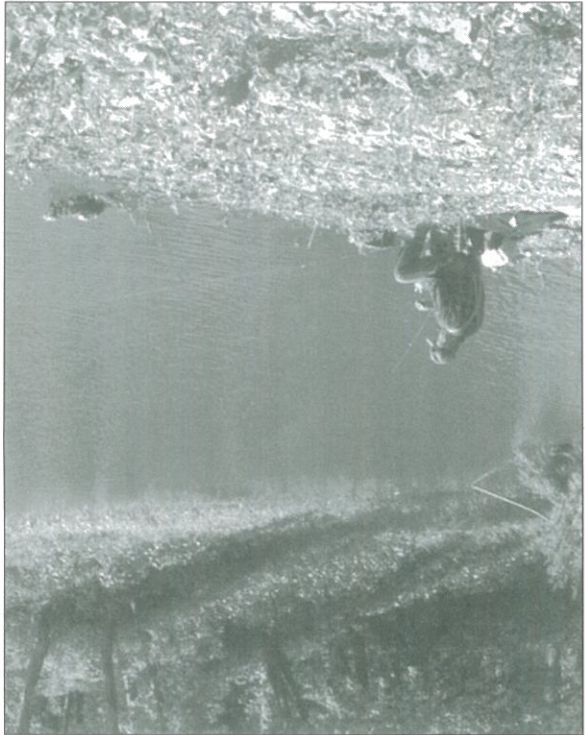


Many Illinois anglers list Rice Lake as one of the best lakes in the area for its large variety of game fish. Fifteen miles of shoreline provide plenty of space, or anglers can bring boats and try their luck offshore. A paved boat ramp is located at the site office. From October 1 to April 1, boat traffic is limited to authorized boats only. This helps limit the disturbance of migrating waterfowl and endangered species using the area.

Fishing



The initial purchase of land comprising Rice Lake State Fish and Wildlife Area in Fulton County, near the Illinois River, was made in 1945. The original 2,370 acres were designated as a refuge for migratory waterfowl with a portion to serve the hunters who contributed largely toward their purchase. Camping facilities were added and, in 1970, renovated. The Department of Natural Resources purchased two neighboring waterfowl clubs consisting of 2,952 acres to provide increased mid-migration habitat. This current 5,660-acre area includes Big Lake, Slim Lake, Goose Lake, Pond Lily Lake, Lock Pond and the Copperas Creek Management Unit. Because the area is subject to extensive flooding, water management projects have been established to provide water control. Each year, the lake is drawn down and aerially seeded with high-quality moist soil plants to provide food to attract waterfowl as they migrate.

History

As a stopover area for migrating waterfowl, Rice Lake and the surrounding areas provide an excellent opportunity for wildlife observation. Because of an extensive habitat management program, this backwater area is used by thousands of ducks and geese as they move through central Illinois during the changing seasons. Visitors also may encounter one of several threatened or endangered plant and animal species such as the American bald eagle, which uses the bottomland timber for roosting. Fishing is a favorite pastime at the area with catches of largemouth bass, bluegill, sunfish, crappie, channel cat, bullhead, buffalo and carp. However, with seasonal fluctuations of the water levels, fishing may be limited during certain times of the year. Duck hunting and archery deer hunting also provide opportunities for the outdoor sportsman.

Rice Lake State Fish and Wildlife Area

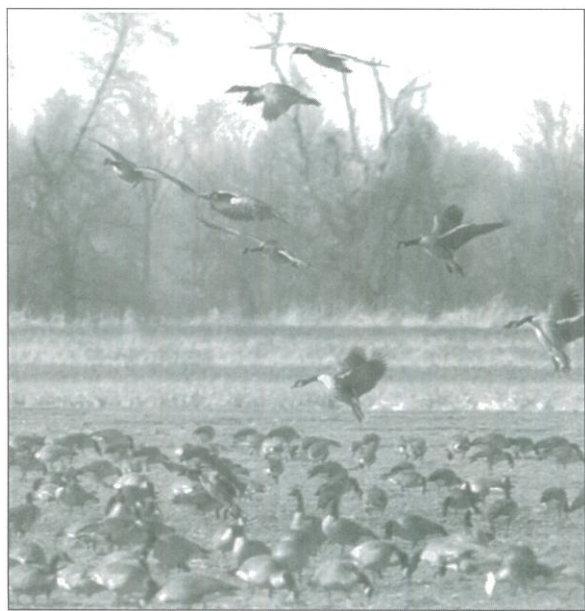
As a stopover area for migrating waterfowl, Rice Lake and the surrounding areas provide an excellent opportunity for wildlife observation. Because of an extensive habitat management program, this backwater area is used by thousands of ducks and geese as they move through central Illinois during the changing seasons. Visitors also may encounter one of several threatened or endangered plant and animal species such as the American bald eagle, which uses the bottomland timber for roosting. Fishing is a favorite pastime at the area with catches of largemouth bass, bluegill, sunfish, crappie, channel cat, bullhead, buffalo and carp. However, with seasonal fluctuations of the water levels, fishing may be limited during certain times of the year. Duck hunting and archery deer hunting also provide opportunities for the outdoor sportsman.

If you have time for an overnight stay, tent and trailer camping areas are available. Thirty-four of the sites are gravelled and have electricity hookups.

Camping

For a break from fishing or a long nature walk, visitors can take advantage of a large, shady picnic area featuring tables, drinking water and restrooms.

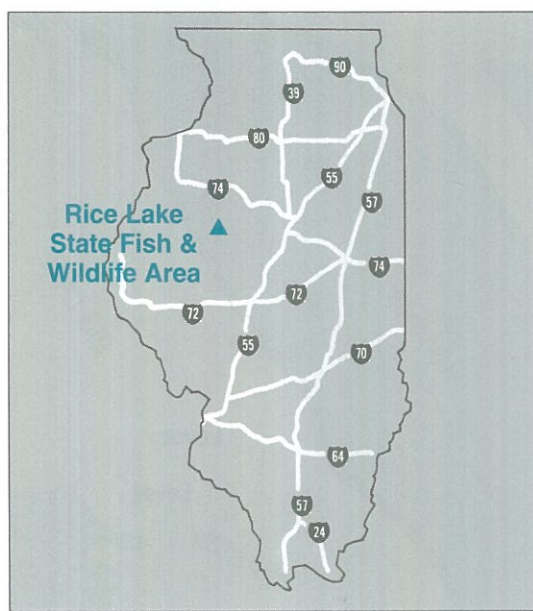
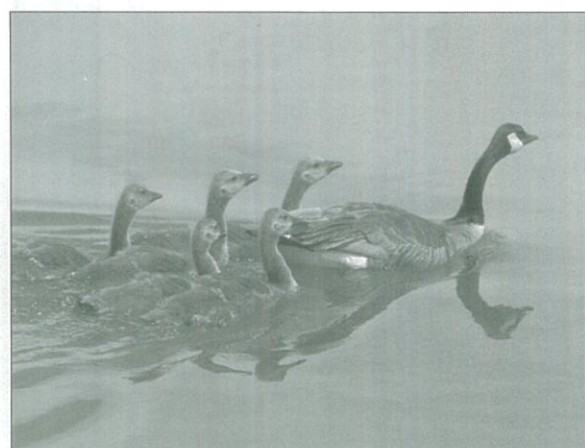
Picnicking



Hunting

During waterfowl hunting season, Rice Lake is popular with sportsmen. The area is open for hunting, and there is a daily draw for unfilled blinds and walk-in hunters. Because of its wetland acreage and river backwater, this area is a hunter's paradise. Archery deer hunting also is available.

For more information, contact Rice Lake State Fish and Wildlife Area, 19721 North US 24, Canton, IL 61520. Phone (309)647-9184.



Rice Lake State Fish & Wildlife Area
19721 N. US 24
Canton, IL 61520, 309-647-9184

- While groups of 25 or more are welcome and encouraged to use the park's facilities, they are required to register in advance with the site office to avoid crowding or scheduling conflicts.
- At least one responsible adult must accompany each group of 15 minors.
- Pets must be kept on leashes at all times.
- Actions by nature can result in closed roads and other facilities.
- We hope you enjoy your stay. Remember, take only memories, leave only footprints.
- For more information on state parks, write to the Illinois Department of Natural Resources, Office of Public Services, 524 S. Second St., Springfield, IL 62701-1787, call (217) 782-7454 or visit its website at <http://dnr.state.il.us>.
- For more information on tourism in Illinois, call the Illinois Department of Commerce and Community Affairs' Bureau of Tourism at 1-800-2CONNECT.
- Deaf and hearing-impaired individuals may call the Department of Natural Resources' TTY number, (217) 782-9175, or use the Ameritech Relay Number, 1-800-526-0844.

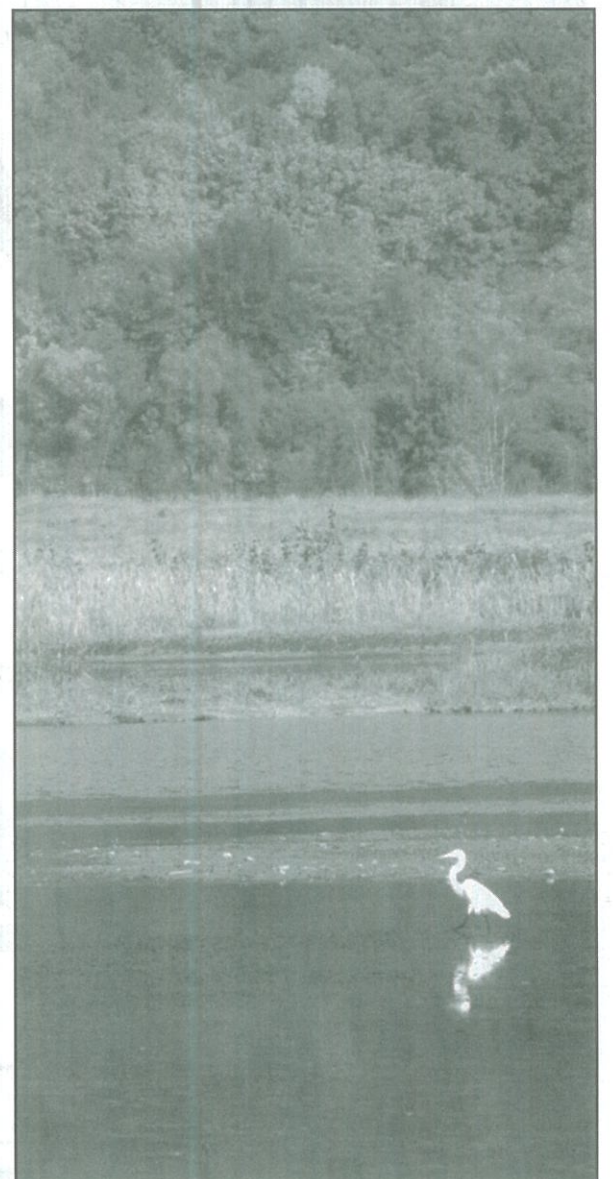
Rod R. Blagojevich
Governor

Joel Brunsvold
Director

of Natural Resources (IDNR) and those funded by the U.S. Fish and Wildlife Service and other agencies is available to all individuals regardless of race, sex, national origin, disability, age, religion or other non-merit factors. If you believe you have been discriminated against, contact the funding source's civil rights office and/or the Equal Employment Opportunity Officer, IDNR, 524 S. 2nd, Springfield, IL 62701-1787; (217) 785-0067; TTY (217) 782-9175.

Rice Lake

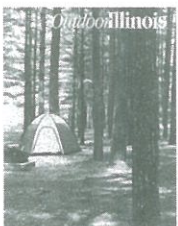
STATE FISH & WILDLIFE AREA



Illinois
Department of
Natural Resources



If the outdoors in Illinois is where you want to be—

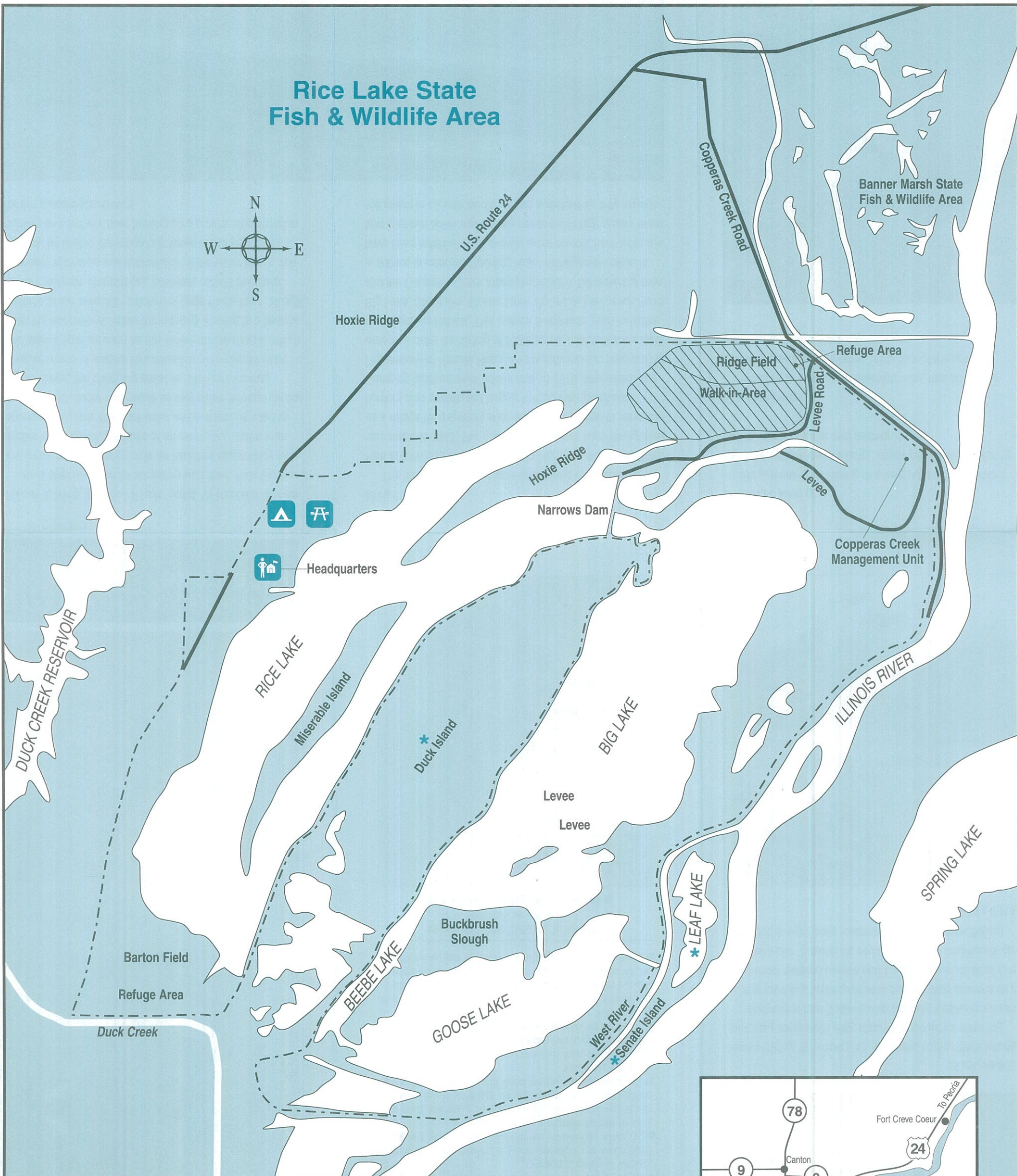
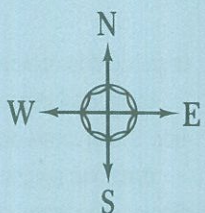


Subscribe to *OutdoorIllinois* magazine. A publication of the Department of Natural Resources, it's the perfect source of information for outdoor enthusiasts who fish, hunt, birdwatch, camp, boat, hike, ski, bike, or simply enjoy being outdoors. From stories about state park sites to season dates and features on a variety of outdoor activities, *OutdoorIllinois* has it all!

Receive 12 issues for only \$10, plus a free, full-color wall calendar in the December issue. Call toll-free in Illinois, 1-800-720-3249. Outside Illinois, call (217) 782-1687. TTY (217) 782-9175. Or send a \$10 check or money order to *OutdoorIllinois*, 524 South Second St., Springfield, Ill. 62701.



Rice Lake State Fish & Wildlife Area



Banner Marsh State Fish & Wildlife Area

Refuge Area

Ridge Field Walk-in-Area

Levee Road

Levee

Copperas Creek Management Unit

Narrows Dam

Hoxie Ridge

Hoxie Ridge

Headquarters

RICE LAKE

Miserable Island

Duck Island

BIG LAKE

Levee

Levee

GOOSE LAKE

Buckbrush Slough

LEAF LAKE

West River

Senate Island

Barton Field

Refuge Area

Duck Creek

SPRING LAKE

Legend



Park Headquarters



Picnic Area



Campground

— Park Boundary

— Road

* Private Property

▨ Walk-in-Area

