

Boating

Because of its central location relative to the lake, the park is a great place to launch a boat. Three boat ramps are available to the public free-of-charge. A four-lane boat ramp with a (618) 594-3622 or visit www.csa-sailing.org

The harbor complex has a conventional boat launching ramp and three electric hoists which can place sailboats up to 2,000 pounds (in the 16- to 18-foot range) in the water from the harbor wall. For additional information, contact the harbor master at (618) 594-3622 or visit www.csa-sailing.org

Sailing

A combination of wide open water, low surrounding terrain and strong winds provides the conditions which make Carlyle Lake one of the Midwest's most popular sailing lakes. Regional and national regattas are held here, and in 1994 the US Olympic Festival games sailing competition was hosted by Eldon Hazlet State Park and the Carlyle Sailing Association.

A 40-acre sailboat harbor, protected in a deep inlet, is at the south end of the park and is operated as a land-based marina, meaning all boats are stored on land. The sailboat harbor is leased from the park by the Carlyle Sailing Association, which operates it as a concession for members.

More than 750,000 people visit Eldon Hazlet to camp, boat, fish, hunt, picnic, bird watch and to hike the more than 9 miles of trails. Also popular are the sailboat regattas, held almost every summer weekend. Whatever type of recreation you choose, it's probably offered at Carlyle Lake.

Other improvements on the Kaskaskia River. Festival games sailing competition was hosted by Eldon Hazlet State Park and the Carlyle Sailing Association.

Other improvements on the Kaskaskia River. Festival games sailing competition was hosted by Eldon Hazlet State Park and the Carlyle Sailing Association.

It seems appropriate for one of the largest campgrounds in the Illinois state park system to be located on the largest man-made lake in Illinois. Eldon Hazlet State Park is a 3,000-acre site on the west shore of Carlyle Lake, a Kaskaskia River impoundment. The site is located 3 miles north of Carlyle and 2 miles east of Illinois Route 127 in Clinton County.

The Park

The site is leased by the Department of Natural Resources from the U.S. Army Corps of Engineers, which built the 26,000-acre lake. Carlyle attorney, Eldon Hazlet, was the first president of the Kaskaskia Valley Association, which organized and promoted construction of two of Illinois' three largest reservoir and recreational complexes – Carlyle Lake and Lake Shelbyville, along with other improvements on the Kaskaskia River.



State of Illinois
Department of Natural Resources



Eldon Hazlet

STATE PARK





The Eldon Hazlet **Campground Store**, located at the entrance to the Illinois Campground, is a 2,000-square-foot store which contains groceries, camping and fishing supplies, clothes, live bait, ice and firewood. A public laundry room and outdoor patio are also available. Please call the store at (618) 594-3387 for hours of operation.

Reservations can be made online through www.reserveamerica.com for Class A sites 1-65, Handicap Site 93, Rent-A-Cabins, and shelters. Campsites may be reserved for a maximum of 14 nights per 30-day period and reservations **must be made at least five days before the campsite is needed.**

Three shower buildings are located in the campground, plus numerous privy toilets. Recreational amenities include several sets of playground equipment, a basketball court, a sand volleyball court, horseshoe pits, and an amphitheater. There are two hiking trailheads that connect to the campgrounds. Additional parking is available for vehicles and boat trailers. To register for a campsite see one of the campground hosts.

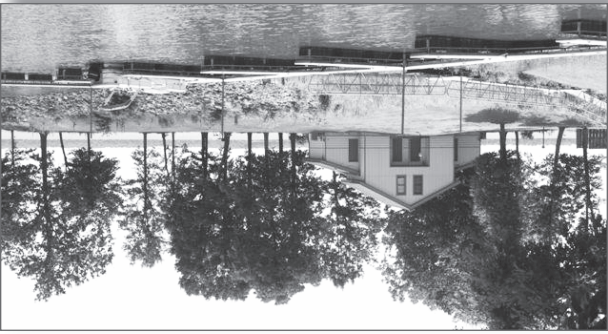
The Illinois Campground, located in Eldon Hazlet State Park, has 328 Class A campsites with 30 and 50 amp electrical hook-ups, 36 Class C campsites for walk-in tent camping and two rustic Rent-A-Cabins.

Camping

Seven Class A campsites are accessible to individuals in wheelchairs. The campground occupies almost 1 1/2 miles of the Carlyle Lake shoreline, and most of the campsites are within easy reach of the water. Many campers keep their boats in the coves located along the campground.

Seven Class A campsites are accessible to individuals in wheelchairs. The campground occupies almost 1 1/2 miles of the Carlyle Lake shoreline, and most of the campsites are within easy reach of the water. Many campers keep their boats in the coves located along the campground.

Carlyle Lakefront Cottages



Nestled on a scenic overlook, twenty lakefront cottages offer visitors a rustic, yet comfortable experience. Perfect for a weekend getaway, company retreat or family reunion, each cottage sleeps four. Accommodations in the 780 square foot units include a kitchenette, living area, bedroom with queen bed, a secluded loft with two singles and a deck. The kitchenette is equipped with a stove, refrigerator, microwave, coffee maker and sink. Other amenities include cable TV, linens, utensils and cookware. Twelve complimentary boat docks are available to cottage renters upon request. A community shelter with picnic tables, barbecue grills and a playground are conveniently located near the cottages. For more information on prices and availability, call (618) 594-8701 or email hazletcottages@gmail.com. Their website is <http://www.hazletcottages.com>.

Osage Youth Group Camping Area

Youth group camping is available at the Osage Youth Group Area. With easy access to the lake and plenty of hiking trails, this area is a favorite of scout and church groups. The campground has a picnic shelter, privy toilets and drinking water. The area is very large and can accommodate hundreds of tent campers. Please notify the park office if you would like to use the area.

Swimming Pool



A public swimming pool is located behind the campground store. The pool is open from Memorial Day weekend through Labor Day weekend. With a zero entry to 4 1/2 foot depth and staffed by a lifeguard, the pool is ideal for families with small children. A user fee is required to enter the pool facility. For pool hours and fees, call 618-594-3387.

Hunting

The park has more than 50 acres designated for archery deer, dove, and upland game hunting. In addition, a controlled pheasant hunting program is held every year, usually from early November to early January. Permits and controlled pheasant hunting information are available on the IDNR website. Eldon Hazlet can accommodate up to 125 hunters per day, Wednesday through Sunday. The park also offers pheasant hunting and archery deer hunting opportunities for disabled hunters. For more information and site specific regulations on hunting, please review the Hunter Fact Sheet found on the IDNR website under the public hunting areas section. An archery range with an elevated platform is open year round, except during the controlled pheasant hunting season.



Picnicking

Eight picnic areas are available in the park, all of which are located near the lake. Tables and grills are provided at all of the picnic areas, and five of the areas have electricity-equipped shelters that can be reserved at www.ReserveAmerica.com.

South Shore State Park

A satellite site of Eldon Hazlet, South Shore is a 3 mile long park located on Carlyle Lake's southeast side, approximately 3 miles east of Carlyle on Route 50. Hunting opportunities are available within the park. For a site specific Hunter Fact Sheet, visit the IDNR website and go to the public hunting areas section. For more information on South Shore State Park, call Eldon Hazlet Site Office at (618) 594-3015.



Eldon Hazlet State Park
 20100 Hazlet Park Road
 Carlyle, IL 62231, (618) 594-3015
www.dnr.state.il.us ■ dnr.eldonhazlet@illinois.gov

- At least one responsible adult must accompany each group of 15 minors.
- Pets must be kept on leashes at all times.
- Actions by nature can result in closed roads and other facilities. Please call ahead to the park office before you make your trip.
- We hope you enjoy your stay. Remember; take only memories leave only footprints.
- For more information on state parks, write to the Department of Natural Resources, Office of Land Management, One Natural Resources Way, Springfield, IL 62702-1271 or visit our website at <http://dnr.state.il.us>
- For more information on tourism in Illinois, call the Illinois Department of Economic Opportunity, Bureau of Tourism at 1-800-2Connect.

Telecommunication Device for Deaf and Hearing Impaired Natural Resources Information **(217) 782-9175** for **TDD only** Relay Number **800-526-0844**.

Equal opportunity to participate in programs of the Illinois Department of Natural Resources (IDNR) and those funded by the U.S. Fish and Wildlife Service and other agencies is available to all individuals regardless of race, sex, national origin, disability, age, religion or other nonmerit factors. If you believe you have been discriminated against, contact the funding source's civil rights office and/or the Equal Employment Opportunity Officer, IDNR, One Natural Resources Way, Springfield, IL 62702-1271; (217) 785-0067; TTY (217) 782-9175.

Natural Features

Wildlife abounds at Eldon Hazlet, in part due to the natural resource management program implemented at the park. Various types of warm season grasses and legumes are planted to provide supplemental cover and food for wildlife. Brush piles and nest structures, such as bluebird boxes have been placed throughout the park. The restoration of natural habitats, such as prairie and wetlands, also benefits local wildlife populations.

Across from the site office, is a 3-acre tall grass prairie with more than fifty species of native plants. Numerous species of wildflowers bloom in the summer, including compass plant, blazing star, purple coneflowers, rattlesnake master, American feverfew and stiff tickseed.

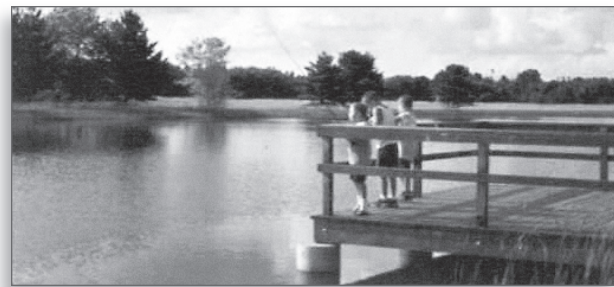
Deer, red foxes, raccoons, squirrels, woodchucks, quail, doves and songbirds, including bluebirds, are among the wildlife species to be seen. More than 200,000 waterfowl stop at the lake on their migratory travels north and south each year. Along with waterfowl, other types of birds commonly seen at the park include wading birds, such as herons and egrets, as well as shorebirds, songbirds and raptors.

Wildlife



The area around Carlyle Lake are home to an abundance of wildlife, including the Eastern Massasauga rattlesnake, an Illinois endangered species. The shy, retreating nature and small size of this snake, averaging only 24 inches, makes it hard to find.

The Illinois Department of Natural Resources, in conjunction with the U.S. Army Corps of Engineers and the U.S. Fish & Wildlife Service, has initiated a study to understand the habitats, range and habitat necessary to sustain this protected species. Should you come upon a Massasauga, please do not kill it or disturb it, but report it to the park staff, a campground host or call (618) 594-3015. Your cooperation is vital for their survival.



Fishing

Certainly one of the most popular activities at Carlyle Lake is fishing. More than 30 species of fish are found in the lake, including local favorites like white bass, channel catfish, crappie, largemouth bass, bluegill, carp and buffalo. Bank fishing is permitted anywhere in the park. The Allen Branch area is used most often and offers an accessible fishing pier. Accessible fish cleaning stations are located at Allen Branch and Apache Boat Ramps.

The **Illini Pond** is a 4-acre fishing pond with a walk-out pier. It is located across from the Campground Store on the Illini Trail. The pond is stocked with bass, bluegill and catfish and provides easy fishing opportunities for children.

Guided Trail Hikes

Eldon Hazlet State Park has more than nine miles of hiking trails throughout the park. Guided hikes conducted by the park's interpreter are offered periodically during the summer camping season. For scheduling information, contact the Site Interpreter at the park office or call 618/594-3015.

Trail Descriptions

Cherokee Trail [3.0 miles]

Trail to cemetery is wheelchair accessible. Three miles of winding trails take you through a mature oak-hickory forest, over four footbridges and along the shoreline for great views of the lake. Loop 1 (1.5 miles) has been developed as a tree identification trail and connects to the Osage Youth Campground. Loop 2 (.75 mile) passes by views of the lake. Loop 3 (.75 mile) passes by Burnside Cemetery, a pre-Civil War cemetery where some of Clinton County's original settlers are buried.

Kaskaskian Trail [2.5 miles]

This trail is named in honor of the Mississippian Native Americans who inhabited the Kaskaskia River Valley from approximately A.D. 900-1300. The Kaskaskian Trail leads the hiker through a variety of natural habitats and offers excellent wildlife viewing opportunities. The trailhead is at the park office, although the trail may be accessed from many areas including the Illini Campground, Osage Youth Campground, Pawnee Trail and the Apache Day Use Area.

Illini Trail [1.5 miles]

Trail is wheelchair accessible. Located across from the campground store, this trail winds through a restored prairie and loops around the Homer Guthrie Fishing Pond. The fishing pond is open to bank fishing.

Pawnee Trail [1.0 mile]

The Pawnee Trail may be accessed from two trailheads. The main trailhead is located at the parking lot area of the Lakefront Cottages; it is also accessible from the Cherokee Trail parking lot. Beginning at the Cottage Trailhead, the trail

runs along a high ridge overlooking the lake, past the Burnside Cemetery, to the Cherokee Trail parking lot and through a successional growth field. From the cemetery to the Cherokee Trail parking lot, Pawnee and Loop 3 of Cherokee share the same trail.

Eagle Trail [0.75 mile]

This trail was developed in May 1996 by a local Boy Scout as part of his requirements to earn the rank of Eagle Scout. Located near the north end of the Illini Campground, the Eagle Trail offers an easy hike on level terrain.

Wetland Educational Trail [0.5 mile]





This trail is wheelchair accessible. This trail winds through a permanent pond and moist-soil habitat. It is an excellent place to view waterfowl, shorebirds and wading birds. Interpretive signs along the trail educate hikers on the benefits of wetlands.

Bluestem Trail [0.5 mile]

This trail is wheelchair accessible. A quarter-mile interpretive loop trail winds through a three-acre

prairie restoration area directly across from the park office. More than 50 species of native prairie plants are present, including both little and big bluestem grasses, compass plant, rattlesnake master, purple coneflower, wild quinine and blazing star.

Trail Reminders


- Pack it in, pack it out.
- Keep pets on leashes. 
- Do not disturb wildlife.
- Bikes and horses are not allowed on the hiking trails.  
- Poison ivy is very common along the hiking trails. Learn to identify it and avoid it. 

Map Trail Key

C	Cherokee Trail	3.0 mi
K	Kaskaskian Trail	2.5 mi
I	Illini Trail	1.5 mi
P	Pawnee Trail	1.0 mi
E	Eagle Trail75 mi
W	Wetland Trail05 mi
B	Bluestem Trail25 mi

All Hiking Trails are closed Wednesday through Sunday from early November to early January due to a controlled pheasant hunting program in the park during these dates.

Legend

	Launching Ramp		Picnic Shelter
	Campground		Playground
	Campground Store		Restrooms
	Fishing		Sailboat Harbor
	Fish Cleaning Station		Sanitary Dumping Station
	Handicapped Accessible		Scenic Overlook
	Nature Trail		Showers
	Parking		Swimming Pool
	Park Office		Drinking Water
	Picnic Area		Viewing Area

